



तमिलनाडु के लिए राज्य स्तरीय समग्र कृषि-मौसम परामर्श बुलेटिन



State Composite Agro-meteorological Advisory Bulletin for Tamil Nadu and Puducherry Bulletin No. 020/2025

For the period 0830 IST, 11th March 2025 to
0830 IST, 16th March 2025

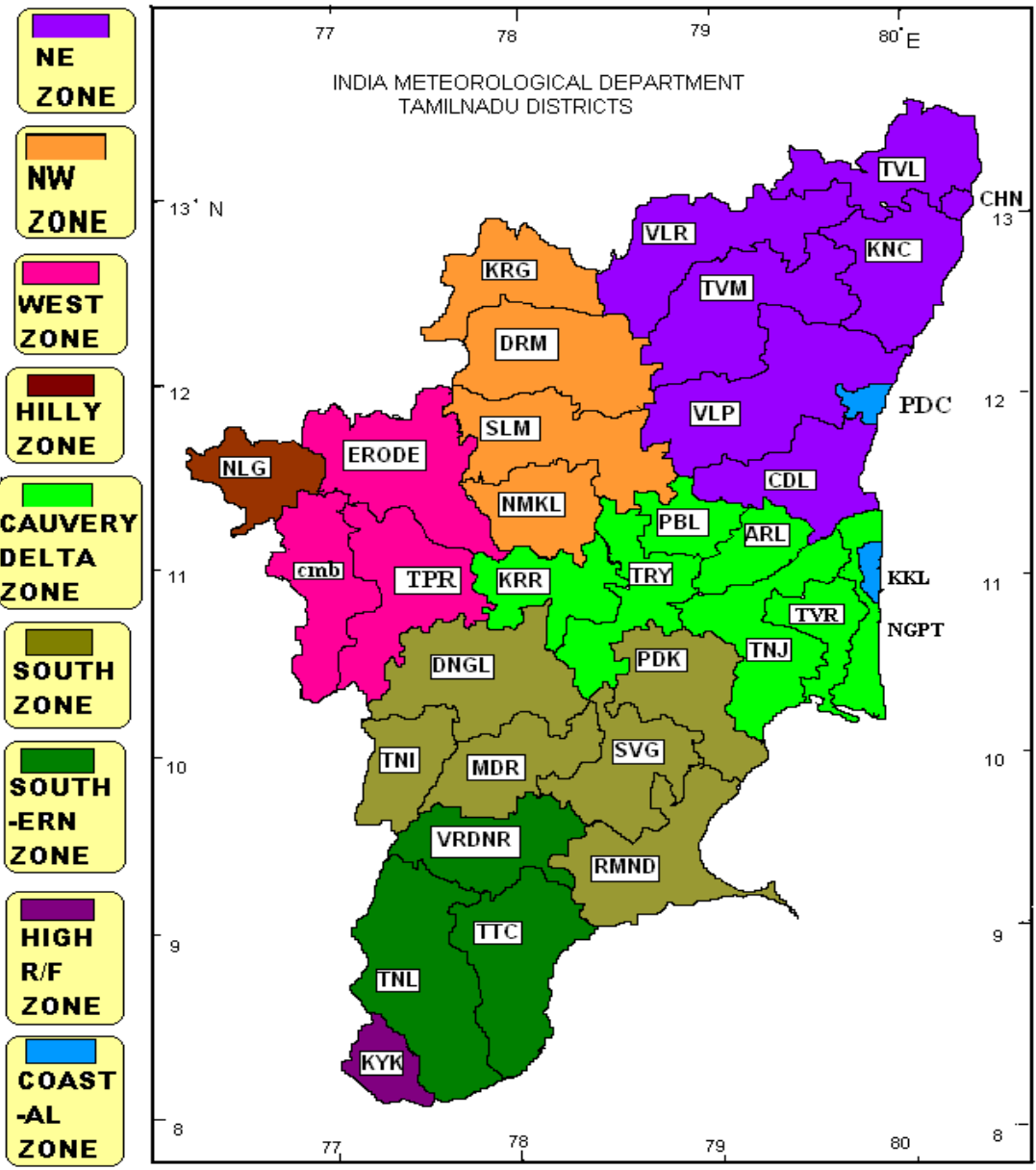
Issued on Tuesday, 11th March 2025

Issued by

DDGM, Regional Meteorological Centre, India Meteorological Department,
Chennai in collaboration with TNAU and nine AMFU's of Agro climatic Zones of
the Tamil Nadu state

Agro climatic zones of the state

Sl. No	Agro climatic zone	Districts	Agro met field Unit (AMFU) location
1	Northeastern zone	Kanchipuram, Tiruvallur, Cuddalore Tiruvannamalai, Chennai, Villupuram , Vellore	Chennai
2	Northwestern zone	Dharmapuri, Krishnagiri, Salem and Namakkal	Namakkal
3	Western Zone	Erode, Tiruppur and Coimbatore,	Coimbatore,
4	Cauvery Delta zone	Thanjavur, Nagapattinam, Tiruvarur, Karur, Perambalur, Ariyalur and Tiruchirapalli.	Adudurai
5	Southern zone	Virudhunagar, Tirunelveli and Thoothukudi	Kovilpatti
6	South Zone	Pudukkottai, Madurai, Dindigul, Theni, Ramanathapuram and Sivagangai	Kannivadi
7	High rainfall zone	Kanyakumari	Pechiparai
8	Hilly zone	Nilgiris	Ooty
9	Coastal Zone	Karaikal and Pondicherry	Karaikal



Past Weather Summary for the period 07.03.25 to 10.03.25 for the State of Tamilnadu & Puducherry

Temperature:

Maximum Temperature of range **31°C – 39°C** prevailed over the state. Kodaikanal and Uthagamandalam recorded Maximum temperature range **21°C – 27°C** during the period.

Minimum temperature of range **19°C - 26°C** prevailed over the State. Kodaikanal and Uthagamandalam recorded Minimum temperature of range **09°C - 12°C** during the same period.

Spatial distribution of Rainfall

Spatial distribution of Rainfall	Tamil Nadu	Puducherry
Widespread (Most places)	--	--
Fairly widespread (Many places)	--	--
Scattered (Few Places)	--	--
Isolated (One or Two Places)	09.03.25	--
Dry	07.03.25, 08.03.25 & 10.03.25	07.03.25, 08.03.25, 09.03.25 & 10.03.25

Chief Amounts of Rainfall (in cms):-

07.03.25 : Nil

08.03.25 : Nil

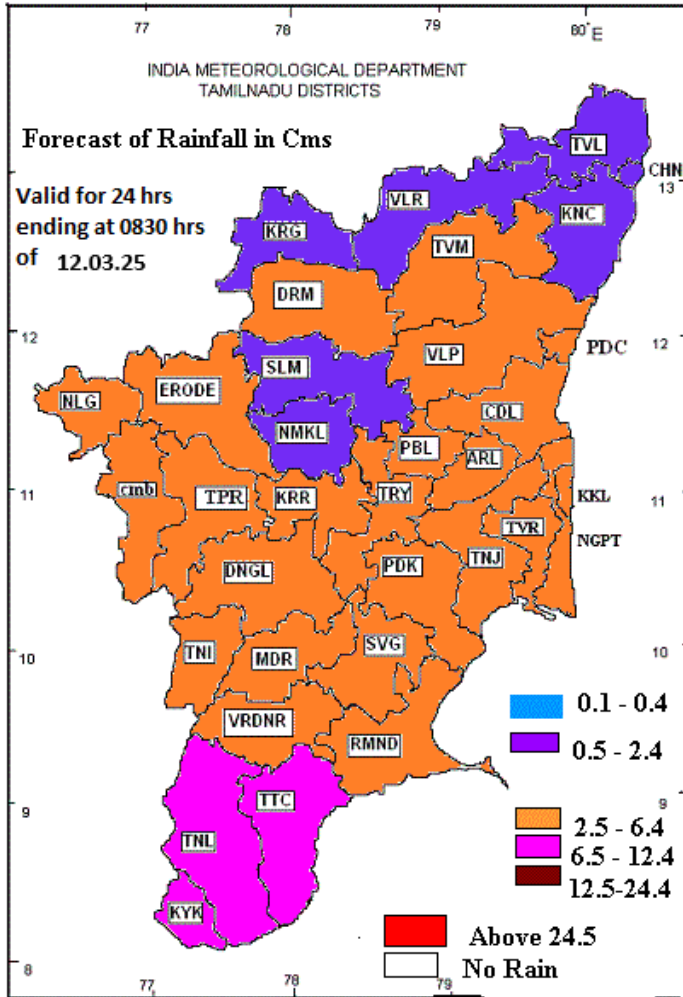
09.03.25 : Nil

10.03.25 : Nil

**DISTRICT LEVEL ENSEMBLE WEATHER FORECAST ISSUED ON: 11.03.25
VALID FOR THE NEXT 5 DAYS**

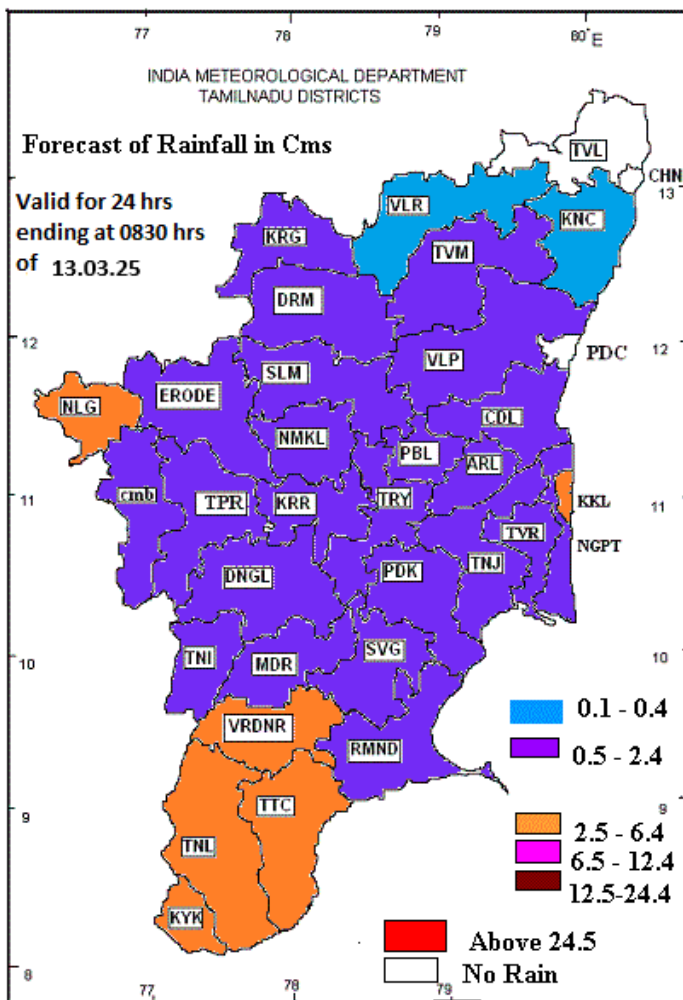


**INDIA METEOROLOGICAL DEPARTMENT
REGIONAL METEOROLOGICAL CENTRE, CHENNAI**



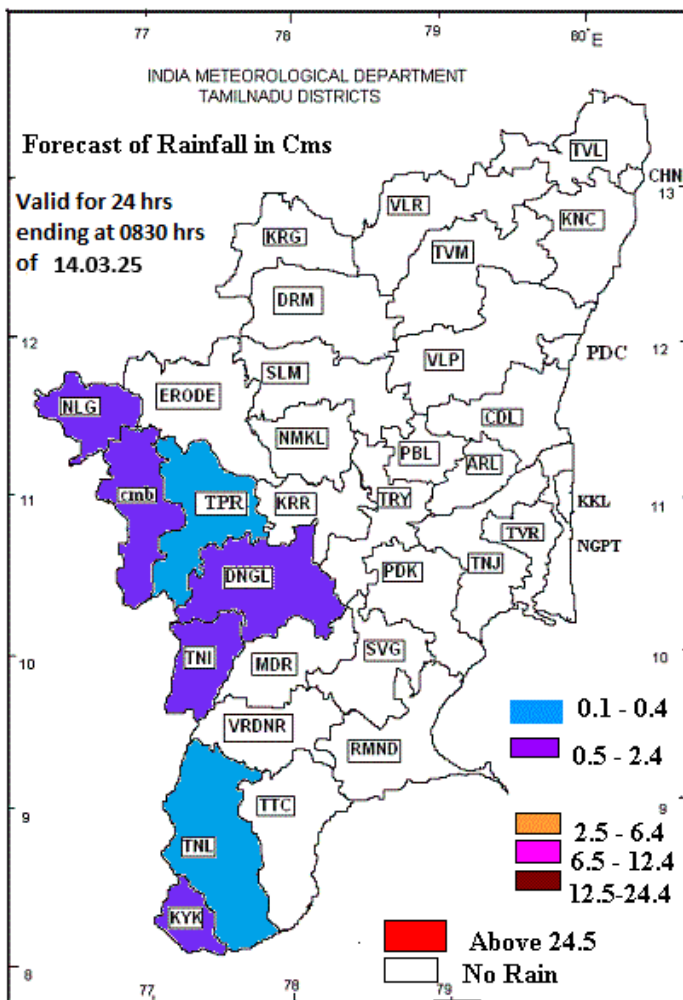


INDIA METEOROLOGICAL DEPARTMENT
REGIONAL METEOROLOGICAL CENTRE, CHENNAI



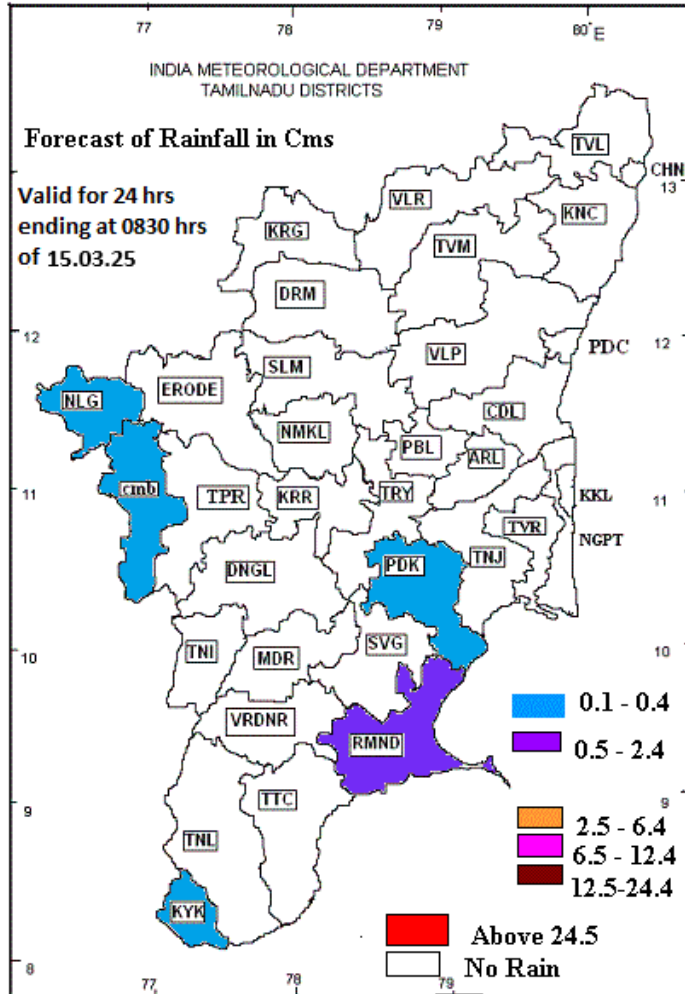


INDIA METEOROLOGICAL DEPARTMENT
REGIONAL METEOROLOGICAL CENTRE, CHENNAI



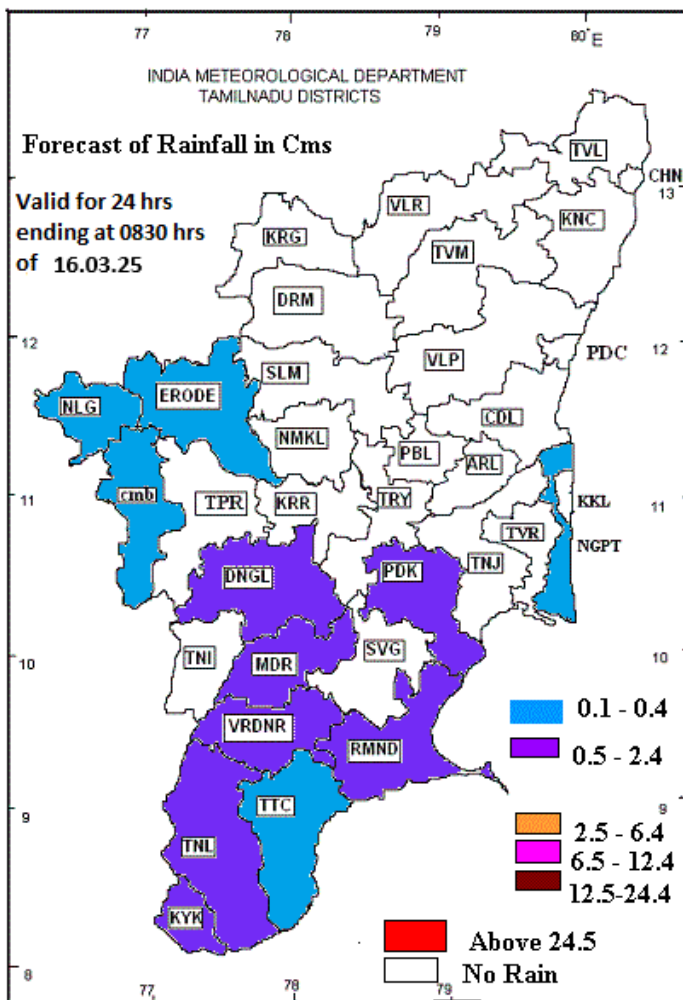


INDIA METEOROLOGICAL DEPARTMENT
REGIONAL METEOROLOGICAL CENTRE, CHENNAI





INDIA METEOROLOGICAL DEPARTMENT
REGIONAL METEOROLOGICAL CENTRE, CHENNAI



District-wise Agromet Advisories

Chennai, Kancheepuram, Villupuram, Tiruvannamalai, Tiruvallur, Vellore and Cuddalore

SMS Advisory:

(12.03.2025-16.03.2025) Light to moderate rain at a few places over Tamilnadu.

Livestock Advisory:

- 1.The ewes does which are ready for mating must be supplemented with leguminous fodder and energy rich fodder along with minerals mixture and vitamins before mating where is called flushing.
- 2.The water provided for poultry must be whole some and clean, moreover it must also be checked whether the water is up to the standard for drinking water.
- 3.The dairy cattle must be supplemented with mineral mixture to enhance milk production.
- 4.Grazing animals with for jowl edema condition and pale eye mucosa must be immediately dewormed.
- 5.The mortality in piglets during this season may be prevented using heaters at appropriate temperature.
- 6.This month is conducive for breeding in sheep, it may be allowed for mating this month.
- 7.The ruminants must not be allowed to graze in dew laden grass before sunrise
- 8.Rabbit may be allowed by mating now due to conducive environment rabbit will kindle more bunnies during these months due to which necessary reproductive management must be followed.
- 9.The chicks must be given artificial heat (1 watt / chick or coal brooder for every 200 chicks for first 2 weeks of age).

Agricultural advisory

Rice:

Due to prevailing weather conditions leaf folder and stem borer infestation found in paddy crop. To manage them, spray carbosulfan 400 ml/ac or cartap hydrochloride 600 g/ac during morning or evening hours.

Due to prevailing weather conditions gall midge infestation is found in paddy crop. To control spray chlorpyrifos 20% EC 500 ml/ac or phosalone 35 EC 600 ml/ac.

Due to prevailing weather condition brown plant leafhopper infestation is found in paddy crop. Symptoms Nymphs and adults congregate at the base of the plant above the water level.

Affected plant dries up and gives a scorched appearance called "hopper burn". Circular patches of drying and lodging of matured plant. To control spray dinotefuran 20 SG @ 80 g/ac or pymetrozine 50% WG @ 120 g/ac or thiamethoxam 25 WG @ 40 g/ac with wetting agent.

Sugarcane:

Crown mealy bug and pokkahboeng disease of sugarcane observed in field. Symptoms are stunted growth, terminal shoot drying, yellowing of leaf and weakening of cane. To control follow integrated management practices.

Sett treatment - carbendazim 50 WP @ 2 g/lit for 30 min & imidacloprid 70 WS @ 1.5 ml/lit. for 5 min before planting,

Monitor ant movement in the border rows at regular intervals,

Prophylactic measure - in endemic area, field borders (3 rows) spray imidacloprid 17.8 SL @ 3 ml/10 lit (or) chlorantraniliprole 18.5 SC 4 ml /10 lit (or) clothianidin 50 WDG @ 5g/10 lit (or) spirotetramet 150 OD @ 12.5 ml/10 lit (or) Flonicamid 50% WG @ 3 g/10 lit. If infestation crosses ETL (10%), the insecticide application should be repeated at 20 days interval with rotation of above insecticides. Before spraying ensure de-trashing and it should be done at 5 months after planting.

If Pokkahboeng noticed, spray carbendazim 50 WP @ 2 g/lit or propiconazole 25 EC@ 2 ml/lit + sticking agent @ 1 ml/lit 3 times at 20 days interval. Spray should be directed towards central whorl for better control

Ratoon cropping should be discouraged after two ratooning in the endemic areas

Banana:

To control wilt in banana, apply Bacillus subtilis and Trichoderma viride @ 1 kg/acre. or drenching with Bacillus subtilis 5 ml/litre.

Coconut:

In coconut there are possibilities of Rugose Spiraling whitefly infestation. For management farmers are advised to take up spray of Neem oil @ 3%.

Coimbatore

Agro Advisory

Crop	Stage	Advisory
General		Light to moderate rainfall is expected on next five days and the wind speed is expected to be around up to 10 kmph in Western zone districts. Avoid burning of harvested crop residues and incorporation of crop residues in the field will facilitate faster decomposition of residues.
Groundnut	Vegetative	Roll empty drum on 45 to 50 days old groundnut field to increase the yield. Apply Trichoderma Viride @ 2.5 kg / ha by mixing with 300kg FYM to avoid root rot disease due to summer shower.
Mango		Provide inward basin around the tree crops with 1.5m radius from the trunk and provide mulch to conserve soil moisture. If mango tree already having flower, spray 2% Potassium nitrate, when sufficient soil moisture is available to increase fruit set and retardation of fruit. Spray IHR mango special @ 5 gram / lit for 3 times (Feb to March, Nov to Dec, Jun to July) If hopper and thrips incidence noticed, spray Tolfenpyrad 15% EC @ 150ml / ha.
Coconut		Provide inward basin around the tree crops with 1.5m radius from the trunk and apply organic mulch to conserve moisture. Due to high temperature Rugose spiraling whitefly incidence is increasing.
		To control Rugose whitefly, adopt the following IPM measures Yellow sticky traps / sheets (3 x 1ft / 5 x 1ft) @ 20 sheets / ha at 5-6 ft. on trunk smeared with castor oil. Staple leaflets containing Encarsia guadeloupae parasitized cocoons @ 100 Nos. / ha on under surface of infested leaflets. Staple paper strips / cardboard boxes containing Chrysopid eggs @ 1000 / ha Root Wilt (Candidatus Phytoplasma) Recommended NPK + FYM-50kg + Neem Cake 5 kg / palm/yr + Green Manuring Azospirillum – 200g + Phosphobacteria - 200g + VAM – 100g + Bacillus subtilis – 200g + Trichoderma asperellum 200 g / palm / yr

		TNAU Coconut tonic root feeding @ 40 ml / palm at 6 months interval Soil application of 'TNAU COCOCON' @ 5 litre / acre at 3 months interval Need based Root feeding of hexaconazole (3ml + 200 ml water) for leaf Rot
Banana	Vegetative Stage	Due to increasing temperature and radiation, there is a possibility for Erwinia rot due to scorching 3tender leaves. Sow the Sunn hemp seeds 6 kg / acre and irrigate the field.
Animal Husbandry		Due to prevailing weather ranikot disease in poultry especially backyard poultry may be expected hence suitable vaccination is advised from nearby veterinary hospital.

SMS advisory:

Provide inward basin around the tree crops with 1.5m radius from the trunk and provide mulch to conserve soil moisture

Erode

Agro Advisory

Crop	Stage	Advisory
General		Light to moderate rainfall is expected on 12.03.25, 13.03.25 & 16.03.25 and the wind speed is expected to be around up to 10 kmph in Western zone districts. Avoid burning of harvested crop residues and incorporation of crop residues in the field will facilitate faster decomposition of residues.
Groundnut	Vegetative	Roll empty drum on 45 to 50 days old groundnut field to increase the yield. Apply Trichoderma Viride @ 2.5 kg / ha by mixing with 300kg FYM to avoid root rot disease due to summer shower.
Mango		Provide inward basin around the tree crops with 1.5m radius from the trunk and provide mulch to conserve soil moisture. If mango tree already having flower, spray 2% Potassium nitrate, when sufficient soil moisture is available to increase fruit set and retardation of fruit. Spray IHR mango special @ 5 gram / lit for 3 times (Feb to March, Nov to Dec, Jun to July) If hopper and thrips incidence noticed, spray Tolfenpyrad 15% EC @ 150ml / ha.
Coconut		Provide inward basin around the tree crops with 1.5m radius from the trunk and apply organic mulch to conserve moisture. Due to high temperature Rugose spiraling whitefly incidence is increasing.
		To control Rugose whitefly, adopt the following IPM measures Yellow sticky traps / sheets (3 x 1ft / 5 x 1ft) @ 20 sheets / ha at 5-6 ft. on trunk smeared with castor oil. Staple leaflets containing Encarsia guadeloupae parasitized cocoons @ 100 Nos. / ha on under surface of infested leaflets. Staple paper strips / cardboard boxes containing Chrysopid eggs @ 1000 / ha

		<p>Root Wilt (Candidatus Phytoplasma)</p> <p>Recommended NPK + FYM-50kg + Neem Cake 5 kg / palm/yr + Green Manuring</p> <p>Azospirillum – 200g + Phosphobacteria - 200g + VAM – 100g + Bacillus subtilis – 200g + Trichoderma asperellum 200 g / palm / yr</p> <p>TNAU Coconut tonic root feeding @ 40 ml / palm at 6 months interval</p> <p>Soil application of 'TNAU COCOCON' @ 5 litre / acre at 3 months interval</p> <p>Need based Root feeding of hexaconazole (3ml + 200 ml water) for leaf Rot</p>
Banana	Vegetative Stage	Due to increasing temperature and radiation, there is a possibility for Erwinia rot due to scorching 3tender leaves. Sow the Sunn hemp seeds 6 kg / acre and irrigate the field.
Animal Husbandry		Due to prevailing weather ranikot disease in poultry especially backyard poultry may be expected hence suitable vaccination is advised from nearby veterinary hospital.

SMS advisory:

Provide inward basin around the tree crops with 1.5m radius from the trunk and provide mulch to conserve soil moisture

Tiruppur

Agro Advisory

Crop	Stage	Advisory
General		<p>Light to moderate is expected on 12.03.25, 13.03.25 & 14.03.25 and the wind speed is expected to be around up to 10 kmph in Western zone districts.</p> <p>Avoid burning of harvested crop residues and incorporation of crop residues in the field will facilitate faster decomposition of residues.</p>
Groundnut	Vegetative	Roll empty drum on 45 to 50 days old groundnut field to increase the yield. Apply Trichoderma Viride @ 2.5 kg / ha by mixing with 300kg FYM to avoid root rot disease due to summer shower.
Mango		<p>Provide inward basin around the tree crops with 1.5m radius from the trunk and provide mulch to conserve soil moisture.</p> <p>If mango tree already having flower, spray 2% Potassium nitrate, when sufficient soil moisture is available to increase fruit set and retardation of fruit.</p> <p>Spray IHR mango special @ 5 gram / lit for 3 times (Feb to March, Nov to Dec, Jun to July)</p> <p>If hopper and thrips incidence noticed, spray Tolfenpyrad 15% EC @ 150ml / ha.</p>
Coconut		<p>Provide inward basin around the tree crops with 1.5m radius from the trunk and apply organic mulch to conserve moisture.</p> <p>Due to high temperature Rugose spiraling whitefly incidence is increasing.</p>
		To control Rugose whitefly, adopt the following IPM measures Yellow sticky traps / sheets (3 x 1ft / 5 x 1ft) @ 20 sheets / ha at 5-6 ft. on trunk smeared with castor oil.

		<p>Staple leaflets containing <i>Encarsia guadeloupae</i> parasitized cocoons @ 100 Nos. / ha on under surface of infested leaflets.</p> <p>Staple paper strips / cardboard boxes containing Chrysopid eggs @ 1000 / ha</p> <p>Root Wilt (Candidatus Phytoplasma)</p> <p>Recommended NPK + FYM-50kg + Neem Cake 5 kg / palm/yr + Green Manuring</p> <p>Azospirillum – 200g + Phosphobacteria - 200g + VAM – 100g + Bacillus subtilis – 200g + Trichoderma asperellum 200 g / palm / yr</p> <p>TNAU Coconut tonic root feeding @ 40 ml / palm at 6 months interval</p> <p>Soil application of 'TNAU COCOCON' @ 5 litre / acre at 3 months interval</p> <p>Need based Root feeding of hexaconazole (3ml + 200 ml water) for leaf Rot</p>
Banana	Vegetative Stage	Due to increasing temperature and radiation, there is a possibility for Erwinia rot due to scorching 3tender leaves. Sow the Sunn hemp seeds 6 kg / acre and irrigate the field.
Animal Husbandry		Due to prevailing weather ranikot disease in poultry especially backyard poultry may be expected hence suitable vaccination is advised from nearby veterinary hospital.

SMS advisory:

Provide inward basin around the tree crops with 1.5m radius from the trunk and provide mulch to conserve soil moisture

Nilgiris

General Advisory:

Management of seedborne diseases Seeds can be treated with *Trichoderma asperellum* @ 4g/kg or *Bacillus subtilis* @ 10g/kg to manage seed borne pathogens. Further, soil testing has to be done before any cropping programme.

SMS Advisory:

To manage wilt in pepper, farmers are advised to apply *Trichoderma asperellum* / *Bacillus subtilis* @ 25g and Neem cake @ 500g / vine is recommended. Applications can be made during the rain-free period.

Horticulture (Stage)	Horticulture Specific Advisory
POTATO	To manage late blight in potato crop, Foliar spray of mancozeb @ 2 g/l or chlorothalonil @ 2 g/l on 45, 60 and 75 days after planting is recommended during the rain free period.
Live Stock	Live Stock Specific Advisory
BUFFALO	i) Provide support to 5 months old trees using wooden poles. ii) Provide drainage facility and avoid fertilizer and pesticide application. iii) Removal and destruction of decaying and rotten leaves

Likely impacts of weather warnings (General)

Damage from thunderstorms with heavy to light rainfall rain. Cattle can become infected with monsoon diseases.

Impact based advisories (General)

Livestock i) Protect your animals from lightning and thunderstorm. ii) Do not allow the animals to graze outside. iii) Don't tie the animals to the electric poles and under trees. iv) In consultation with the local veterinarian, vaccinate your animals against seasonal diseases.

Ariyalur, Karur, Nagapattinam, Perambalur, Thanjavur, Tiruvarur and Tiruchirapalli

Agro Advisory:

General	Farmers are advised to provide adequate drainage facilities to all crops due to moderate rainfall forecast.	
	Link the drainage channel with farm ponds towards efficient water drainage besides the rain water storage.	
	Avoid application of fertilizers and insecticides to the crops.	
	Keep the farm implements, machineries and batteries in uplands / store rooms.	
Rice	Harvested paddy seeds before rain may be dried at moisture less than 13% using the current weather condition to prevent stored pests damage.	
Black gram		Farmers are advised to provide adequate drainage facilities to blackgram due to moderate rainfall forecast.
Banana		Provide support with wooden poles to avoid lodging of tree due to rain and wind.
Cattle	Cow	Exposure of calves and kids to rain should be avoided to prevent from pneumonia attack in view of expected high rain.

SMS advisory

Farmers are advised to provide adequate drainage facilities to all crops due to moderate rainfall forecast.

Dindigul

SMS Advisory	Chances of Rather heavy rain on 12 Mar & Moderate rain on 13, 14 Mar. Maximum temperature would be in the range of 37°C to 38°C and the minimum temperature would be between 25°C-26°C. Generally cloudy sky will appear for the next five days. Wind is expected with the speed of 6-10 Kmph from, Southeast & Northeast directions.
--------------	---

General Advisory:

THUNDERSTORM WARNING:

Thunderstorm with lightning is likely to occur at one or two places over on 12. 03. 2025 & 13.03.2025. Keep your Livestock / Animals safely in the shelters. Don't tie the animals to the electric poles and under trees.

To safeguard your animals from lightning and thunderstorm, remove the metal bells tied to the necks of animals.

Since Moderate rainfall expected for the coming days, farmers are advised to provide proper drainage facilities to all crops fields.

Avoid / postpone the application of fertilizers and insecticides to the crops.

Weather Based Agro-Advisories: Maize, Chilly & Animal Husbandry)

Maize:

The application of micronutrients will rectify the nutrient deficiency in Maize Cultivation.

Farmers who have planted maize recently can apply 5kg of Millet nutrient mixture or 10 kg of ZnSo₄ per acre.

Also, apply Farm Yard Manure mixed with 2kgs of Azospirillum and 2kgs of Phosphobacteria per acre.

Chilly:

The incense of Tobacco cutworm noticed in Chilly. The Newly hatched larvae scarp the green matter in the leaf, and the affected leaf looks like a papery white structure. In severe infestations, they feed voraciously on the entire lamina and petiole.

To control cultivate the castor as a trap crop.

As a preventive measure, plough the soil to expose and kill pupae.

Set up pheromone trap @15Nos/ha.

Spray Thiodicarb75%WP @2g/lit or Novaluron10%EC @7½ ml/10 litre water.

Fertilizer application and spraying activities should be carried out, only on non-rainy days.

Animal Husbandry:

During hot weather conditions, your cattle may be affected by issues like respiratory distress and mucous discharge from the mouth. To overcome these problems, farmers are advised to prepare and feed the mixture balls.

Take an equal amount of Jaggery, Cumin seed, and Onion. grind the ingredients and make them as round balls. Feed these balls to the affected cow in the morning and evening hours.

Madurai

SMS Advisory	Chances of Rather heavy rain on 12 Mar & Moderate rain on 13, 16 Mar. Maximum temperature would be in the range of 37°C to 38°C and the minimum temperature would be between 25°C-26°C. Generally cloudy sky will appear for the next five days. Wind is expected with the speed of 6-10 Kmph from, Southeast & Northeast directions.
--------------	---

General Advisory:

THUNDERSTORM WARNING:

Thunderstorm with lightning is likely to occur at one or two places over on 12. 03. 2025 & 13.03.2025. Keep your Livestock / Animals safely in the shelters. Don't tie the animals to the electric poles and under trees.

To safeguard your animals from lightning and thunderstorm, remove the metal bells tied to the necks of animals.

Since Moderate rainfall expected for the coming days, farmers are advised to provide proper drainage facilities to all crops fields.

Avoid / postpone the application of fertilizers and insecticides to the crops.

Weather Based Agro-Advisories: (Mango, Sugarcane & Animal Husbandry)

Mango:

To reduce the fruit drop and increase the yield in mango, give foliar spraying with Mango Special @ 5 grams/litre of water along with the shampoo and lemon juice.

Fertilizer application and spraying activities should be carried out, only on non-rainy days.

Sugarcane:

Micronutrient deficiency symptoms were noticed in sugarcane crops.

To alleviate the micronutrient deficiency as well as to improve the yield of ratoon sugarcane, foliar spraying of Sugarcane booster @ 1kg/acre at the time of 45 days after planting and 1.5kg/acre at the time of 60 days after planting and @ 2kg/acre at the time of 75 days after planting is recommended.

Mix the booster with 200 litres of water along with the sticking agent.

Animal Husbandry:

During hot weather conditions, your cattle may be affected by issues like respiratory distress and mucous discharge from the mouth. To overcome these problems, farmers are advised to prepare and feed the mixture balls.

Take an equal amount of Jaggery, Cumin seed, and Onion. grind the ingredients and make them as round balls. Feed these balls to the affected cow in the morning and evening hours.

Pudukottai

SMS Advisory	Chances of Rather heavy rain on 12 Mar & Moderate rain on 13, 16 Mar. Maximum temperature would be in the range of 36°C to 37°C and the minimum temperature would be between 24°C-25°C. Generally cloudy sky will appear for the next five days. Wind is expected with the speed of 6-12 Kmph from, Southeast, Northeast & East directions.
--------------	---

General Advisory:

THUNDERSTORM WARNING:

Thunderstorm with lightning is likely to occur at one or two places over on 12. 03. 2025 & 13.03.2025. Keep your Livestock / Animals safely in the shelters. Don't tie the animals to the electric poles and under trees.

To safeguard your animals from lightning and thunderstorm, remove the metal bells tied to the necks of animals.

Heavy rain is likely to occur at isolated places over the district on 12 March 2025. Farmers are advised to act swiftly to repair the water channels, farm ponds and other water bodies to harvest the rain water. During these days farmers are advised to avoid irrigation, intercultural operations and application of plant protection measures to the standing crops, provide adequate drainage facilities in the fields to avoid water stagnation due to heavy rainfall, do not allow the animals to grazing outside, standing near the trees or electric poles & provide safe shelter.

Weather Based Agro-Advisories: (Sugarcane, Brinjal & Animal Husbandry)

Sugarcane:

Mulching can be carried out in sugarcane cultivation. Within a week after planting, mulch the ridges uniformly with cane trash to a thickness of 10 cm.

It helps to tide over drought, conserves moisture, reduces weed population and minimizes shoot borer incidence.

For heavy soil and wetland conditions, mulch the field with trash after 21 days of planting. Avoid trash mulching in areas where incidence of termites is noticed.

Brinjal:

Due to the current weather, the incidence of spotted beetles is noticed in the Brinjal crop. The symptoms of damage are found in leaves. The beetles are scrapping of chlorophyll.

It leads to skeletonizing and drying of leaves.

To control, collect the damaged leaves with grubs, and egg masses and destroy them.

Spray Cartap hydrochloride @ 35gm per tank.

Fertilizer application and spraying activities should be carried out, only on non-rainy days.

Animal Husbandry:

During hot weather conditions, your cattle may be affected by issues like respiratory distress and mucous discharge from the mouth. To overcome these problems, farmers are advised to prepare and feed the mixture balls.

Take an equal amount of Jaggery, Cumin seed, and Onion. grind the ingredients and make them as round balls. Feed these balls to the affected cow in the morning and evening hours.

Ramanathapuram

SMS Advisory	Chances of Rather heavy rain on 12 Mar & Moderate rain on 13, 16 Mar. Maximum temperature would be in the range of 33°C to 34°C and the minimum temperature would be between 24°C-25°C. Generally cloudy sky will appear for the next five days. Wind is expected with the speed of 6-12 Kmph from, Southeast & Northeast directions.
--------------	---

General Advisory:

THUNDERSTORM WARNING:

Thunderstorm with lightning is likely to occur at one or two places over on 12. 03. 2025 & 13.03.2025. Keep your Livestock / Animals safely in the shelters. Don't tie the animals to the electric poles and under trees.

To safeguard your animals from lightning and thunderstorm, remove the metal bells tied to the necks of animals.

Heavy rain is likely to occur at isolated places over the district on 12 March 2025. Farmers are advised to act swiftly to repair the water channels, farm ponds and other water bodies to harvest the rain water. During these days farmers are advised to avoid irrigation, intercultural operations and application of plant protection measures to the standing crops, provide adequate drainage facilities in the fields to avoid water stagnation due to heavy rainfall, do not allow the animals to grazing outside, standing near the trees or electric poles & provide safe shelter.

Weather Based Agro-Advisories: (Cotton, Black gram & Animal Husbandry)

Cotton:

Chances of the incense of Alternaria leaf blight in Cotton. This disease may occur in all stages but is more severe during 45-60 days of plant growth.

Small pale to brown, irregular, or round spots may appear on the leaves. Sometimes stem lesions are also seen. In severe cases, the spots may appear on bracts and bolls.

Remove and destroy the infected plant residues.

Spray Copper oxychloride @ 2kg per hectare, immediately after the occurrence of the disease. Two to three sprays can be given at 15-day intervals.

Fertilizer application and spraying activities should be carried out, only on non-rainy days.

Black gram:

Due to the prevailing weather condition, there is a chance for the infestation of the sucking pests including Hoppers, Thrips and White flies in the rice fallow Blackgram crop.

To control this, spray Azadiractin at 0.03% or Triazophos at 2 ½ ml/lit of water.

Animal Husbandry:

During hot weather conditions, your cattle may be affected by issues like respiratory distress and mucous discharge from the mouth. To overcome these problems, farmers are advised to prepare and feed the mixture balls.

Take an equal amount of Jaggery, Cumin seed, and Onion. grind the ingredients and make them as round balls. Feed these balls to the affected cow in the morning and evening hours.

Sivagangai

SMS Advisory	Chances of Rather heavy rain on 12 Mar & Moderate rain on 13 Mar. Maximum temperature would be in the range of 37°C to 38°C and the minimum temperature would be between 25°C-26°C. Generally cloudy sky will appear for the next five days. Wind is expected with the speed of 6-10 Kmph from, Southeast & Northeast directions
--------------	--

General Advisory:

THUNDERSTORM WARNING:

Thunderstorm with lightning is likely to occur at one or two places over on 12. 03. 2025 & 13.03.2025. Keep your Livestock / Animals safely in the shelters. Don't tie the animals to the electric poles and under trees.

To safeguard your animals from lightning and thunderstorm, remove the metal bells tied to the necks of animals.

Heavy rain is likely to occur at isolated places over the district on 12 March 2025. Farmers are advised to act swiftly to repair the water channels, farm ponds and other water bodies to harvest the rain water. During these days farmers are advised to avoid irrigation, inter-cultural operations and application of plant protection measures to the standing crops, provide adequate drainage facilities in the fields to avoid water stagnation due to heavy rainfall, do not allow the animals to grazing outside, standing near the trees or electric poles & provide safe shelter.

Weather Based Agro-Advisories: Mango, Banana & Animal Husbandry)

Mango:

Excess irrigation during flowering stage leads to flower drop. Hence, avoid excess watering during flowering.

During flowering stage incidence of mango hoppers, sooty mould and powdery mildew occurs.

To manage Spray 0.6 ml Imidacloprid 17.8 SI per litre of water or 0.6 g Thiamethoxam 25 WG per litre of water or 0.6 g Acetamiprid 20 SP per litre of water or 0.6 ml spirotetramat 150 OD with 2.5gm wettable sulphur 75 WP per litre of water.

In case of delayed flowering happened in Mango crop, spray 10gm of urea per litre of water. Spray twice in 21 days interval.

Banana:

Farmers are requested to give a foliar spray of Banana Booster @ 5 grams per litre of water along with one small pocket of shampoo and extracted lemon juice, starting from the 3rd month after the plant to bunch formation stage in a monthly interval.

Fertilizer application and spraying activities should be carried out, only on non-rainy days.

Animal Husbandry:

During hot weather conditions, your cattle may be affected by issues like respiratory distress and mucous discharge from the mouth. To overcome these problems, farmers are advised to prepare and feed the mixture balls.

Take an equal amount of Jaggery, Cumin seed, and Onion. grind the ingredients and make them as round balls. Feed these balls to the affected cow in the morning and evening hours.

Theni

SMS Advisory	Chances of Rather heavy rain on 12 Mar & Moderate rain on 13, 14 Mar. Maximum temperature would be in the range of 36°C to 37°C and the minimum temperature would be between 24°C-25°C. Generally cloudy sky will appear for the next five days. Wind is expected with the speed of 6-10 Kmph from, Southeast & Northeast directions.
--------------	---

General Advisory:

THUNDERSTORM WARNING:

Thunderstorm with lightning is likely to occur at one or two places over on 12. 03. 2025 & 13.03.2025. Keep your Livestock / Animals safely in the shelters. Don't tie the animals to the electric poles and under trees.

To safeguard your animals from lightning and thunderstorm, remove the metal bells tied to the necks of animals.

Since Moderate rainfall expected for the coming days, farmers are advised to provide proper drainage facilities to all crops fields.

Avoid / postpone the application of fertilizers and insecticides to the crops.

Weather Based Agro-Advisories: (Paddy, Tomato & Animal Husbandry)

Paddy:

The incidence of Whorl maggot is expected in paddy. The symptoms show yellowish-white longitudinal marginal blotching with a hole.

Leaves shrivelled plant, stunted and drooping of young leaves near the tip.

Remove the alternate hosts from the field, and apply the optimum recommendation of potash fertilizer.

To control spray Buprofezin @ 350 ml/acre.

Tomato:

The occurrence of root-knot nematodes and reniform nematodes were noticed in vegetable crops. The nematode-infested field shows day wilting symptoms and also galls in the root.

Farmers are advised to apply neem cake @ 400kg/ha.

Intercrop with marigold.

Apply Purpureocillium lilacinum @ 2½ kg/ha mixed with 100 kg of FYM.

Fertilizer application and spraying activities should be carried out, only on non-rainy days.

Animal Husbandry:

During hot weather conditions, your cattle may be affected by issues like respiratory distress and mucous discharge from the mouth. To overcome these problems, farmers are advised to prepare and feed the mixture balls.

Take an equal amount of Jaggery, Cumin seed, and Onion. grind the ingredients and make them as round balls. Feed these balls to the affected cow in the morning and evening hours.

Salem

WEATHER ADVISORY BULLETIN FOR LIVESTOCK, POULTRY AND AGRICULTURE

Livestock, Poultry & Crop	Stage	Weather advisory
Livestock	General	Dairy animals undergo severe stress in hot climate due to prevailing higher temperature. This high temperature stress leads to reduction in the solids not fat (SNF) content of milk. This leads to lower price for the milk sold. This issue can be mitigated by reducing the heat stress by Avoiding the animals to graze during hot weather. Providing sufficient concentrate feed during the colder part of the day.

		<p>Increasing the energy content of the concentrate feed by giving additional grains at the rate of 100g per litre of milk produced per day. Grains like maize, cumbu, sorghum, etc whichever is cheaper can be grinded and mixed with the concentrate feed of the dairy animals.</p> <p>Providing sufficient quantity of water throughout the day</p> <p>Water can be sprayed in the form of fine mist over the animal during the afternoon hours.</p> <p>Housing the animals in the poorly ventilated asbestos houses may be avoided. During summer animals can be comfortably tied under the tree shade with good ventilation.</p>
Desi bird	General	<p>Desi birds, reared under intensive method will be affected more during summer. Pecking will be observed. Feed intake will be low and hence the growth will also be low. To prevent mortality and growth problems in desi birds, farmers are advised to increase the space and to increase fibre content by 2 % and add oil in the feed (4 – 5 kg / ton).</p>
Agro advisory from Krishi Vigyan Kendra, Namakkal		
Crops	General	<p>It is expected to receive rainfall in the forthcoming days. Hence, the agriculture and horticulture crop growers are advised to avoid sowing, irrigation, fertilizer application and spraying of chemicals. Provide adequate support to Banana aged more than 5 months and provide propping in Sugarcane against lodging. Provide criss cross ploughing with country plough in rain fed lands at 10 m interval to reduce runoff speed and soil erosion.</p>
Mango	Fruiting stage	<p>To reduce the fruit drop and increase the yield in mango give foliar spraying with mango special @ 5 gram / litre of water along with shampoo and lemon juice.</p>
Vegetable crops	General	<p>The cultivated vegetables show flower dropping and poor fruit setting symptoms due to increased temperature. To prevent this, farmers are advised to sow castor or sesbania seed around the field at a spacing of 7 – 10 feet. This will prevent the entry of hot air from outside the field and also maintain optimum temperature inside the field.</p>

Namakkal

WEATHER ADVISORY BULLETIN FOR LIVESTOCK, POULTRY AND AGRICULTURE

Livestock, Poultry & Crop	Stage	Weather advisory
Livestock	General	<p>Dairy animals undergo severe stress in hot climate due to prevailing higher temperature. This high temperature stress leads to reduction in the solids not fat (SNF) content of milk. This leads to lower price for the milk sold. This issue can be mitigated by reducing the heat stress by</p> <p>Avoiding the animals to graze during hot weather.</p> <p>Providing sufficient concentrate feed during the colder part of the day.</p> <p>Increasing the energy content of the concentrate feed by giving additional grains at the rate of 100g per litre of milk produced per day. Grains like maize, cumbu, sorghum, etc whichever is cheaper can be grinded and mixed with the concentrate feed of the dairy animals.</p> <p>Providing sufficient quantity of water throughout the day</p>

		Water can be sprayed in the form of fine mist over the animal during the afternoon hours. Housing the animals in the poorly ventilated asbestos houses may be avoided. During summer animals can be comfortably tied under the tree shade with good ventilation.
Desi bird	General	Desi birds, reared under intensive method will be affected more during summer. Pecking will be observed. Feed intake will be low and hence the growth will also be low. To prevent mortality and growth problems in desi birds, farmers are advised to increase the space and to increase fibre content by 2 % and add oil in the feed (4 – 5 kg / ton).
Agro advisory from Krishi Vigyan Kendra, Namakkal		
Crops	General	It is expected to receive rainfall in the forthcoming days. Hence, the agriculture and horticulture crop growers are advised to avoid sowing, irrigation, fertilizer application and spraying of chemicals. Provide adequate support to Banana aged more than 5 months and provide propping in Sugarcane against lodging. Provide criss cross ploughing with country plough in rain fed lands at 10 m interval to reduce runoff speed and soil erosion.
Mango	Fruiting stage	To reduce the fruit drop and increase the yield in mango give foliar spraying with mango special @ 5 gram / litre of water along with shampoo and lemon juice.
Vegetable crops	General	The cultivated vegetables show flower dropping and poor fruit setting symptoms due to increased temperature. To prevent this, farmers are advised to sow castor or sesbania seed around the field at a spacing of 7 – 10 feet. This will prevent the entry of hot air from outside the field and also maintain optimum temperature inside the field.

Dharmapuri

WEATHER ADVISORY BULLETIN FOR LIVESTOCK, POULTRY AND AGRICULTURE

Livestock, Poultry & Crop	Stage	Weather advisory
Livestock	General	Dairy animals undergo severe stress in hot climate due to prevailing higher temperature. This high temperature stress leads to reduction in the solids not fat (SNF) content of milk. This leads to lower price for the milk sold. This issue can be mitigated by reducing the heat stress by Avoiding the animals to graze during hot weather. Providing sufficient concentrate feed during the colder part of the day. Increasing the energy content of the concentrate feed by giving additional grains at the rate of 100g per litre of milk produced per day. Grains like maize, cumbu, sorghum, etc whichever is cheaper can be grinded and mixed with the concentrate feed of the dairy animals. Providing sufficient quantity of water throughout the day Water can be sprayed in the form of fine mist over the animal during the afternoon hours. Housing the animals in the poorly ventilated asbestos houses may be avoided. During summer animals can be comfortably tied under the tree shade with good ventilation.

Desi bird	General	Desi birds, reared under intensive method will be affected more during summer. Pecking will be observed. Feed intake will be low and hence the growth will also be low. To prevent mortality and growth problems in desi birds, farmers are advised to increase the space and to increase fibre content by 2 % and add oil in the feed (4 – 5 kg / ton).
Agro advisory from Krishi Vigyan Kendra, Namakkal		
Crops	General	It is expected to receive rainfall in the forthcoming days. Hence, the agriculture and horticulture crop growers are advised to avoid sowing, irrigation, fertilizer application and spraying of chemicals. Provide adequate support to Banana aged more than 5 months and provide propping in Sugarcane against lodging. Provide criss cross ploughing with country plough in rain fed lands at 10 m interval to reduce runoff speed and soil erosion.
Mango	Fruiting stage	To reduce the fruit drop and increase the yield in mango give foliar spraying with mango special @ 5 gram / litre of water along with shampoo and lemon juice.
Vegetable crops	General	The cultivated vegetables show flower dropping and poor fruit setting symptoms due to increased temperature. To prevent this, farmers are advised to sow castor or sesbania seed around the field at a spacing of 7 – 10 feet. This will prevent the entry of hot air from outside the field and also maintain optimum temperature inside the field.

Krishnagiri

WEATHER ADVISORY BULLETIN FOR LIVESTOCK, POULTRY AND AGRICULTURE

Livestock, Poultry & Crop	Stage	Weather advisory
Livestock	General	<p>Dairy animals undergo severe stress in hot climate due to prevailing higher temperature. This high temperature stress leads to reduction in the solids not fat (SNF) content of milk. This leads to lower price for the milk sold. This issue can be mitigated by reducing the heat stress by</p> <p>Avoiding the animals to graze during hot weather.</p> <p>Providing sufficient concentrate feed during the colder part of the day.</p> <p>Increasing the energy content of the concentrate feed by giving additional grains at the rate of 100g per litre of milk produced per day. Grains like maize, cumbu, sorghum, etc whichever is cheaper can be grinded and mixed with the concentrate feed of the dairy animals.</p> <p>Providing sufficient quantity of water throughout the day</p> <p>Water can be sprayed in the form of fine mist over the animal during the afternoon hours.</p> <p>Housing the animals in the poorly ventilated asbestos houses may be avoided.</p> <p>During summer animals can be comfortably tied under the tree shade with good ventilation.</p>
Desi bird	General	Desi birds, reared under intensive method will be affected more during summer. Pecking will be observed. Feed intake will be low and hence the growth will also be low. To prevent mortality and growth problems in desi birds, farmers are advised to increase the space and to increase fibre content by 2 % and add oil in the feed (4 – 5 kg / ton).

Agro advisory from Krishi Vigyan Kendra, Namakkal

Crops	General	It is expected to receive rainfall in the forthcoming days. Hence, the agriculture and horticulture crop growers are advised to avoid sowing, irrigation, fertilizer application and spraying of chemicals. Provide adequate support to Banana aged more than 5 months and provide propping in Sugarcane against lodging. Provide criss cross ploughing with country plough in rain fed lands at 10 m interval to reduce runoff speed and soil erosion.
Mango	Fruiting stage	To reduce the fruit drop and increase the yield in mango give foliar spraying with mango special @ 5 gram / litre of water along with shampoo and lemon juice.
Vegetable crops	General	The cultivated vegetables show flower dropping and poor fruit setting symptoms due to increased temperature. To prevent this, farmers are advised to sow castor or sesbania seed around the field at a spacing of 7 – 10 feet. This will prevent the entry of hot air from outside the field and also maintain optimum temperature inside the field.

Karaikal

Agro Advisory

Crop/livestock	Stage/Particulars	Agro Advisory
Sesame	Sowing	Rice fallow sesame VRI (SV) 1 @ 5 kg/ha may be sown in between February 15 to March 15. Treat the seed with Trichoderma @ 4g/kg or Carbendazim @ 2 g/kg of seeds before sowing.
Cotton	Sowing	For rice fallow cotton, delinted seeds of MCU 7 or SVPR 3 @ 7.5 kg/ha shall be used for sowing.
Black gram or green gram	Flowering stage	Foliar spray of TNAU Pulse Wonder @ 2 kg/acre in 200 litres of water at flower initiation stage decreases flower shedding, increases yield.
Goat	Sheep and goat pox	There is a chance of occurrence of sheep and goat pox in summer season. Hence, to prevent the pox, sheep and goat should be vaccinated before summer.
Cattle	Babesiosis	There may be an occurrence of babesiosis in cattle in February. Jaundice like symptom, yellowish mucosal membrane of eye, rectum and coffee coloured urine are the symptoms of this disease. If cattle are left unattended, after a few days, suffocation will occur and the cow may die. To control the disease, consult a veterinarian immediately. Keep the cattle shed always clean to avoid this disease. In cattle, as a preventive measure for Babesiosis disease, apply Butox @ 2 ml/l of water on cattle and also spray it on the nearby areas of the cattle shed to control ectoparasites.

SMS: Rice fallow sesame can be sown till second week of March.

Puducherry

Agro Advisory

Crop/livestock Stage/Particulars	Agro Advisory
Groundnut	Foliar spray of TNAU Groundnut Rich @ 5 kg/ha in 500 litres of water at peak flowering (35 DAS) and pod development stages (45 DAS)
	In groundnut, apply gypsum 200 kg + borax 10 kg and earthing up on 45 DAS for improving flowering and pod formation.
	To control groundnut leaf minor, set up light trap between 6 to 10 pm at ground level
	To control tobacco caterpillar, collect egg masses and destroy. Spray NSKE 5% Apply Nuclear Polyhedrosis Virus 1.5 x 10 ¹² POBs/ha with crude sugar 2.5 kg/ha and Teepol 250 ml/ha.
Brinjal	To manage Brinjal shoot borer, apply neem cake 200 kg/ha or spray Emamectin Benzoate 4% SG@ 0.4g/l.
Blackgram / Greengram	Foliar spray of TNAU Pulse Wonder @ 2 kg/acre in 200 litres of water at flower initiation stage decreases flower shedding, increases yield. (Or) To promote flowering and increase the yield in black gram and green gram spray panchagavya 2% (20ml/l) or fish meal extract 1% (10ml/l) or DAP 2% on 30 and 45 days after sowing.
Cattle	There may be an occurrence of babesiosis in cattle in February. Jaundice like symptom, yellowish mucosal membrane of eye, rectum and coffee coloured urine are the symptoms of this disease. If cattle are left unattended, after a few days, suffocation will occur and the cow may die. To control the disease, consult a veterinarian immediately. Keep the cattle shed always clean to avoid this disease. In cattle, as a preventive measure for Babesiosis disease, apply Butox @ 2 ml/l of water on cattle and also spray it on the nearby areas of the cattle shed to control ectoparasites.

SMS: Apply gypsum to groundnut crop and DAP spray to pulse crop.

=====