



तमिलनाडु के लिए राज्य स्तरीय समग्र कृषि-मौसम परामर्श  
बुलेटिन

**State Composite Agro-meteorological Advisory  
Bulletin for Tamil Nadu and Puducherry  
Bulletin No. 073/2023**

For the period 0830 IST, 12<sup>th</sup> September 2023 to  
0830 IST, 17<sup>th</sup> September 2023

**Issued on Tuesday, 12<sup>th</sup> September 2023**

Issued by

DDGM, Regional Meteorological Centre, India Meteorological Department,  
Chennai in collaboration with TNAU and nine AMFU's of Agro climatic Zones of  
the Tamil Nadu state

## Agro climatic zones of the state

Sl. No	Agro climatic zone	Districts	Agro met field Unit (AMFU) location
1	Northeastern zone	Kanchipuram, Tiruvallur, Cuddalore Tiruvannamalai, Chennai, Villupuram , Vellore	Chennai
2	Northwestern zone	Dharmapuri, Krishnagiri, Salem and Namakkal	Namakkal
3	Western Zone	Erode, Tiruppur and Coimbatore,	Coimbatore,
4	Cauvery Delta zone	Thanjavur, Nagapattinam, Tiruvarur, Karur, Perambalur, Ariyalur and Tiruchirapalli.	Adudurai
5	Southern zone	Virudhunagar, Tirunelveli and Thoothugudi	Kovilpatti
6	South Zone	Pudukkottai, Madurai, Dindigul, Theni, Ramanathapuram and Sivagangai	Kannivadi
7	High rainfall zone	Kanyakumari	Pechiparai
8	Hilly zone	Nilgiris	Ooty
9	Coastal Zone	Karaikal and Pondicherry	Karaikal



## Past Weather Summary for the period 08.09.23 to 11.09.23 for the State of Tamilnadu & Puducherry

### Temperature:

Maximum Temperature of range **29°C – 39°C** prevailed over the state. Kodaikanal and Uthagamandalam recorded Maximum temperature range **17°C – 21°C** during the period.

Minimum temperature of range **20°C - 28°C** prevailed over the State. Kodaikanal and Uthagamandalam recorded Minimum temperature of range **11°C - 13°C** during the same period.

### Spatial distribution of Rainfall

Spatial distribution of Rainfall	Tamil Nadu	Puducherry
Widespread (Most places)	--	--
Fairly widespread (Many places)	--	--
Scattered (Few Places)	08.09.23	09.09.23, 10.09.23 & 11.09.23
Isolated (One or Two Places)	09.09.23, 10.09.23 & 11.09.23	--
Dry	--	08.09.23

### Chief Amounts of Rainfall (in cms):-

**08.09.23** : Adayar Eco Park (dist Chennai), Tirur KVK AWS (dist Tiruvallur), Avadi (dist Tiruvallur) 8 each, Koratur (dist Tiruvallur), Minnal (dist Ranipet), Chinnakalar (dist Coimbatore), Worth Estate Cherrumulli (dist Nilgiris) 7 each, Sholingur (dist Ranipet), Adayar (dist Chennai), Malar Colony (dist Chennai), Mugalivakkam (dist Chennai), Anna University ARG (dist Chennai), Arakonam (dist Ranipet), Tambaram (dist Chengalpattu), Valasaravakkam (dist Chennai), Chennai Airport (dist Chennai), Alandur (dist Chennai), West Tambaram ARG (dist Chengalpattu) 6 each, R.K.pet (dist Tiruvallur), Tiruvallur (dist Tiruvallur), Panapakkam (dist Ranipet), Taluk Office Pandalur (dist Nilgiris), Avalanche (dist Nilgiris), Kodambakkam (dist Chennai), Kolathur (dist Chennai), Ambathur (dist Tiruvallur), DGP Office (dist Chennai), Anna University (dist Chennai), Royapuram (dist Chennai), Chennai Collectorate Building (dist Chennai), Valparai PTO (dist Coimbatore), Vanagaram (dist Chennai), Ice House (dist Chennai), YMCA Nandanam (dist Chennai) ARG, Perungudi (dist Chennai) 5 each, Ponnai Dam (dist Vellore), Edapadi (dist Salem), Devala (dist Nilgiris), Lalpet (dist Cuddalore), MGR Nagar (dist Chennai), Chennai Nungambakkam (dist Chennai), Kundrathur (dist Kancheepuram), Sriperumbudur (dist Kancheepuram), Thanjavur (dist Thanjavur), Perambur (dist Chennai), Valparai PAP (dist Coimbatore), Cincona (dist Coimbatore), Valparai Taluk Office (dist Coimbatore), Ammundi (dist Vellore), Sholayar (dist Coimbatore), Kattumannar koil (dist Cuddalore) 4 each, Ayanavaram Taluk Office (dist Chennai), Red Hills (dist Tiruvallur), Tiruttani PTO (dist Tiruvallur), Salem (dist Salem), Barwood (dist Nilgiris), Kaveripakkam (dist Ranipet), Tiruttani (dist Tiruvallur), Poonamalle ARG (dist Tiruvallur), Nandhiyar Head

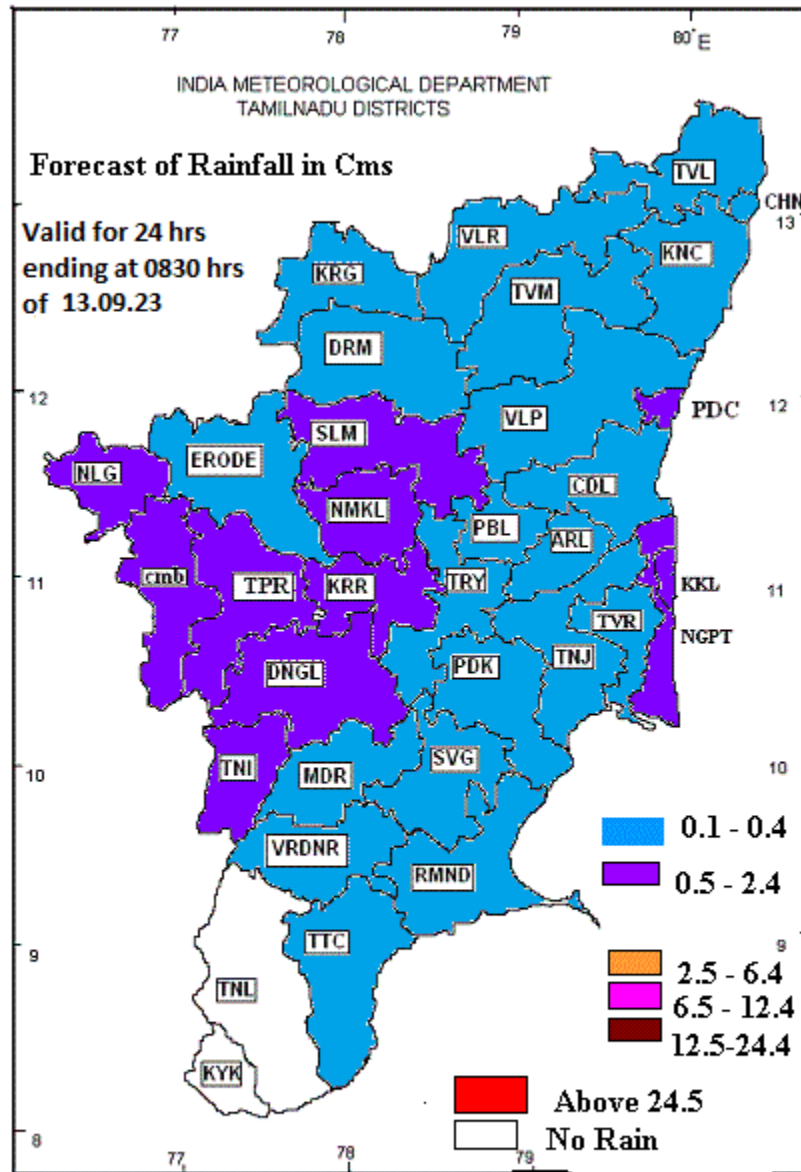
(dist Trichy), Viralimalai (dist Pudukkottai), Sankaridurg (dist Salem), Kil Kotagiri Estate (dist Nilgiris), Naduvattam (dist Nilgiris), CD Hospital Tondayaripet (dist Chennai), Cholavaram (dist Tiruvallur), Pennagaram (dist Dharmapuri), Thiruvalangadu (dist Tiruvallur), Gobichettipalayam (dist Erode), Kollidam (dist Mayiladuthurai), Pallikaranai ARG (dist Chennai) 3 each, Thirumanur (dist Ariyalur), Katpadi (dist Vellore), Chembarambakkam ARG (dist Tiruvallur), Wallajah (dist Ranipet), Poonamallee (dist Tiruvallur), Thamaraipakkam (dist Tiruvallur), Kumarapalayam (dist Namakkal), Chembarabakkam (dist Tiruvallur), Virinjipuram AWS (dist Vellore), Thalaivasal (dist Salem), Thanjai Papanasam (dist Thanjavur), Tondi (dist Ramanathapuram), Ammoor (walajah Railway (dist Ranipet), Siruvani Adivaram (dist Coimbatore), Periyar (dist Theni), Pallipattu (dist Tiruvallur), Tiruvaiyaru (dist Thanjavur), Adavinainnarkoil Dam (dist Tenkasi), Kothagiri (dist Nilgiris), Manapparai (dist Trichy), Gudalur Bazar (dist Nilgiris), Chidambaram (dist Cuddalore), Budalur (dist Thanjavur), Dindigul (dist Dindigul), Harisan Malayalam Ltd. (dist Nilgiris), Upper Gudalur (dist Nilgiris), Jayamkondam (dist Ariyalur), Navalur Kottapattu (dist Trichy), Thanjavur Pto (dist Thanjavur), Trichy Airport (dist Trichy), Upper Bhavani (dist Nilgiris), Annamalai Nagar (dist Cuddalore), Chidambaram Aws (dist Cuddalore), Kolapakkam Arg (dist Chengalpattu), Ponneri (dist Tiruvallur), Wood Braiyar Estate (dist Nilgiris), Ayyampettai (dist Thanjavur) 2 each, Yercaud (dist Salem), Arcot (dist Ranipet), Vazhapadi (dist Salem), Nlumukku (dist Tirunelveli), Thekkadi (dist Theni), TNAU CRI Yethapur (dist Salem), Bhuvanagiri (dist Cuddalore), Palar Anicut (dist Ranipet), Varattupallam (dist Erode), Thenkasi (dist Tenkasi), Samayapuram (dist Trichy), Suthamalli Dam (dist Ariyalur), Gundar Dam (dist Tenkasi), Kumbakonam (dist Thanjavur), Tiruchirappalli Junction (dist Trichy), Mangalapuram (dist Namakkal), Kvk Kattukuppam Arg (dist Kancheepuram), Anaimaduvu Dam (dist Salem), K Bridge (dist Nilgiris), Emeralad (dist Nilgiris), Thandampettai (dist Tiruvannamalai), Mettur (dist Salem), Nagapattinam (dist Nagapattinam), Papparapatty KVK AWS (dist Dharmapuri), Bhavani (dist Erode), Gangavalli (dist Salem), Ponmalai (dist Trichy), Gudiyatham (dist Vellore), Omalur (dist Salem), Balamore (dist Kanyakumari), Valangaiman (dist Tiruvarur), Pullambadi (dist Trichy), Vallam (dist Thanjavur), Thuvakudi Imti (dist Trichy), Ammapettai (dist Erode), Sandhiyur KVK AWS (dist Salem), Parangipettai (dist Cuddalore), Trichy Town (dist Trichy), Chittar (dist Kanyakumari), Poondi (dist Tiruvallur), Thogamalai (dist Karur), Kothavacherry (dist Cuddalore), Billimalai Estate (dist Nilgiris), Chamraj Estate (dist Nilgiris), Tiruvannamalai (dist Tiruvannamalai), Oothu (dist Tirunelveli), Thondamuthur (dist Coimbatore), Lower Anaicut (dist Thanjavur), Perunchani Dam (dist Kanyakumari), Manjalaru (dist Thanjavur), Ranipet (dist Ranipet), VIT Chennai AWS (dist Chennai) 1 each.

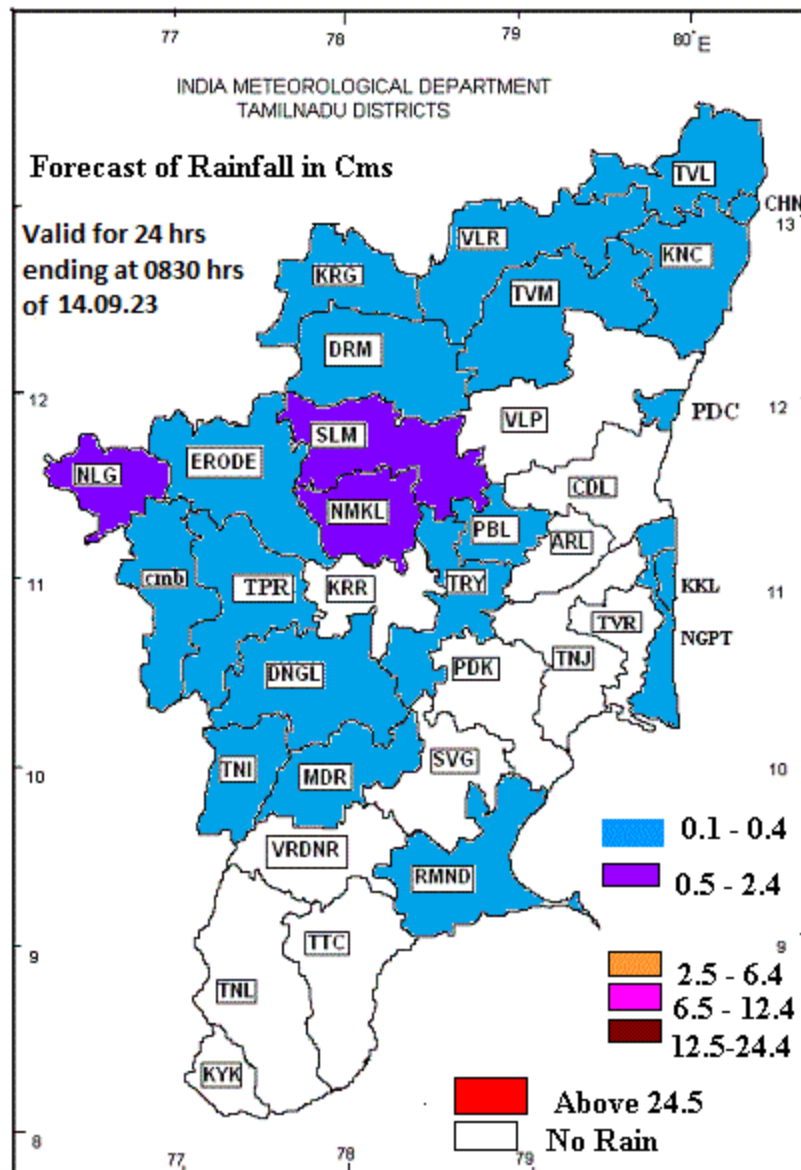
**09.09.23** : Taluk Office Pandalur (dist Nilgiris) 9, Devala (dist Nilgiris) 5, Harisan Malayalam Ltd. (dist Nilgiris), Wood Braiyar Estate (dist Nilgiris) 4 each, G Bazar (dist Nilgiris), Upper Gudalur (dist Nilgiris), Avalanche (dist Nilgiris), Pattukottai (dist Thanjavur), Eraniel (dist Kanyakumari), Worth Estate Cher (dist Nilgiris) 3 each, Madukkur (dist Thanjavur), Naduvattam (dist Nilgiris), Chinnakalar (dist Coimbatore), Balamore (dist Kanyakumari), Nalumukku (dist Tirunelveli), Oothu (dist Tirunelveli), Sholayar (dist Coimbatore) 2 each, Kurunthancode (dist Kanyakumari), Pechiparai (dist Kanyakumari), Karambakudi (dist Pudukkottai), Colachel (dist Kanyakumari), Thuckalay (dist Kanyakumari), Kuzhithurai (dist Kanyakumari), Yercaud (dist Salem), Valparai Pap (dist Coimbatore), Mylaudy (dist Kanyakumari), Mambzhathuraiyaru (dist Kanyakumari), Vedaranyam (dist Nagapattinam), Barwood (dist Nilgiris), Valparai Taluk Office (dist Coimbatore), Vettikadu (dist Thanjavur), Neivasal Thenpathi (dist Thanjavur), Nagercoil (dist Kanyakumari), Mannargudi (dist Tiruvarur), Chittar (dist Kanyakumari), Kalial (dist Kanyakumari), Adavinainnarkoil Dam (dist Tenkasi), Upper Bhavani (dist Nilgiris), Thirparappu (dist Kanyakumari), Suralacode (dist Kanyakumari), Kozhiporvilai (dist Kanyakumari), Mullanginavillai (dist Kanyakumari), Kodiayakarai (dist Nagapattinam), Anaikedanku (dist Kanyakumari), Puducherry (dist Puducherry), Kakkachi (dist Tirunelveli), Valparai PTO (dist Coimbatore) 1 each.

**10.09.23** : Tirukoilur (dist Kallakurichi), BASL Vengur(dist Kallakurichi) 5 each, DSCL Thirupalapandal (dist Kallakurichi), DSCL Madampoondi (dist Kallakurichi) 4 each, Thandarampettai (dist Tiruvannamalai), Mangalapuram (dist Namakkal), Edapadi (dist Salem), BASL Manalurpet (dist Kallakurichi), Sankaridurg (dist Salem), Rasipuram (dist Namakkal), Puduchatram (dist Namakkal) 3 each, Devakottai (dist Sivaganga), Ayyampettai (dist Thanjavur), Papparapatty KVK AWS (dist Dharmapuri), Vallam (dist Thanjavur), PWD Travellers Bungalow (dist Sivaganga), Chinnakalar (dist Coimbatore), Thirumanur (dist Ariyalur) 2 each, Thuraiyur (dist Trichy), Dharamapuri (dist Dharmapuri), Valparai PTO (dist Coimbatore), Perambalur (dist Perambalur), Salem (dist Salem), Sandhiyur KVK AWS (dist Salem), Tirukattupalli (dist Thanjavur), Pulipatti (dist Madurai), Taluk Office Pandalur (dist Nilgiris), Sholayar (dist Coimbatore), KCS Mill-1 Moongilthuraipattu (dist Kallakurichi), Ammapettai (dist Erode), Dharmapuri PTO (dist Dharmapuri), Thanjavur PTO (dist Thanjavur), Tiruvannamalai (dist Tiruvannamalai), Melur (dist Madurai), Upper Bhavani (dist Nilgiris), Yercaud (dist Salem), Thathiengrpet (dist Trichy), Cincona (dist Coimbatore), Idayapatti (dist Madurai), Kurungulam (dist Thanjavur), Valparai PAP (dist Coimbatore), TNAU CRI Yethapur (dist Salem), Chittampatti (dist Madurai), Nandhiyar Head (dist Trichy), Avalanche (dist Nilgiris), Sholinganallur (dist Chennai) Valparai Taluk Office (dist Coimbatore) 1 each.

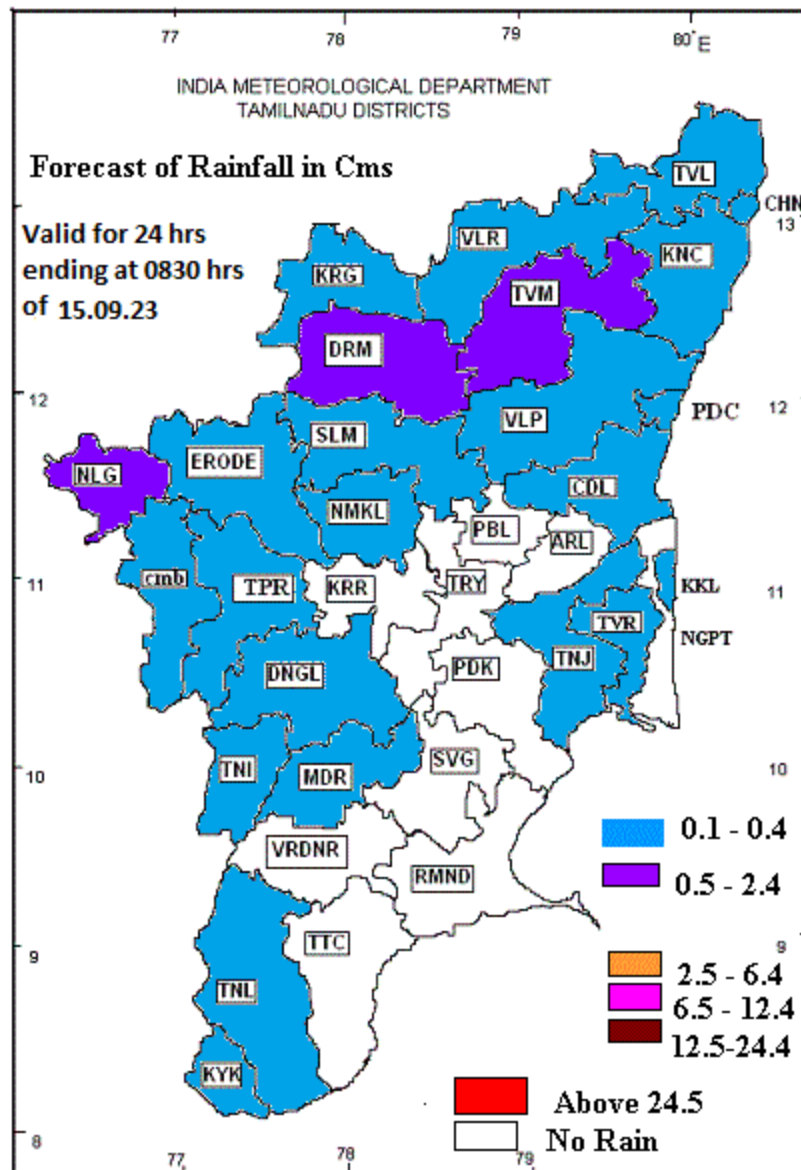
**11.09.23** : Valparai PTO (dist Coimbatore), Chinnakalar (dist Coimbatore) 6 each, Sholayar (dist Coimbatore), Arantangi (dist Pudukkottai) 4 each, Cincona (dist Coimbatore), PWD Travellers Bungalow (dist Sivagangai) 3 each, Valparai Taluk Office (dist Coimbatore), Valparai PAP (dist Coimbatore), Devala (dist The Nilgiris) 2 each, Mettupalayam dist (Coimbatore), Bhavani (dist Erode), Manalmedu dist (Mayiladuthurai), Sembanarkoil PWD (dist Mayiladuthurai), Kumarapalayam (dist Namakkal), Tirumayam (dist Pudukkottai), Avalanche (dist The Nilgiris), Harisan Malayalam Ltd. (dist The Nilgiris), Worth Estate Cherrumulli (dist The Nilgiris), Taluk Office Pandalur (dist The Nilgiris), Upper Bhavani (dist The Nilgiris), Wood Braiyar Estate (dist The Nilgiris), Periyar (dist Theni) 1 each.

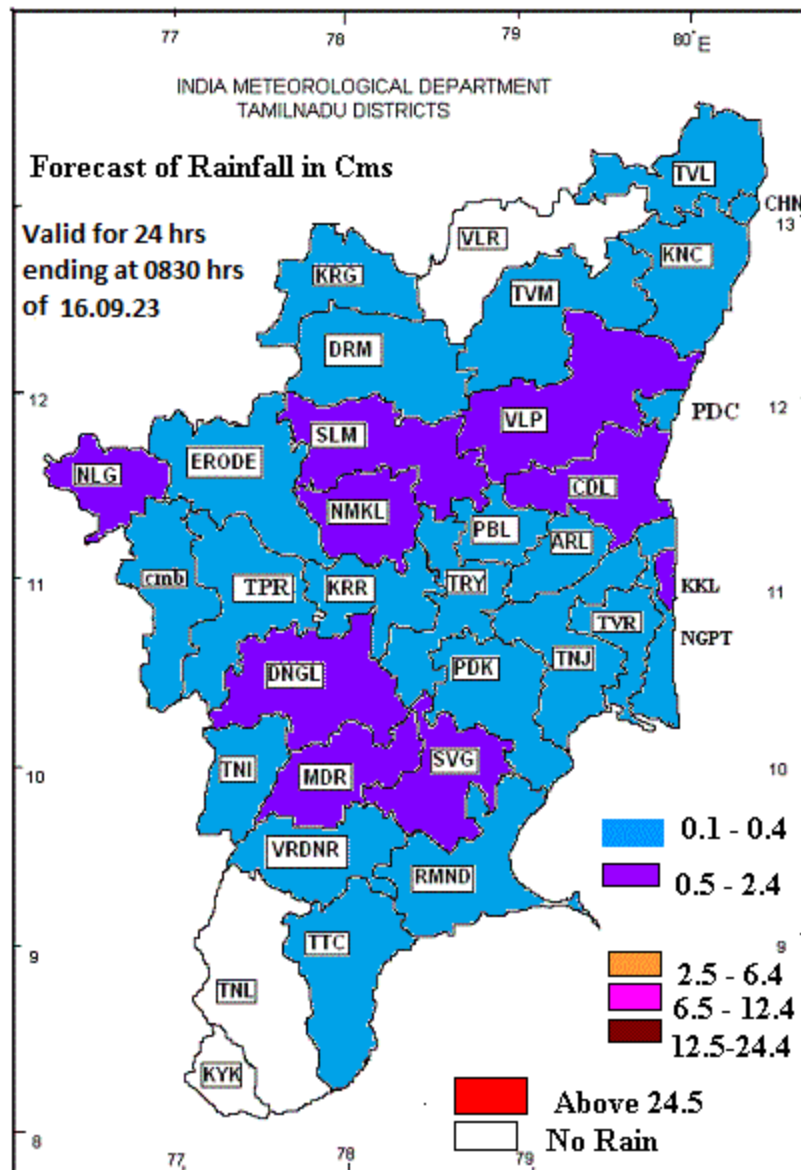
**DISTRICT LEVEL ENSEMBLE WEATHER FORECAST ISSUED ON: 12.09.23  
VALID FOR THE NEXT 5 DAYS**

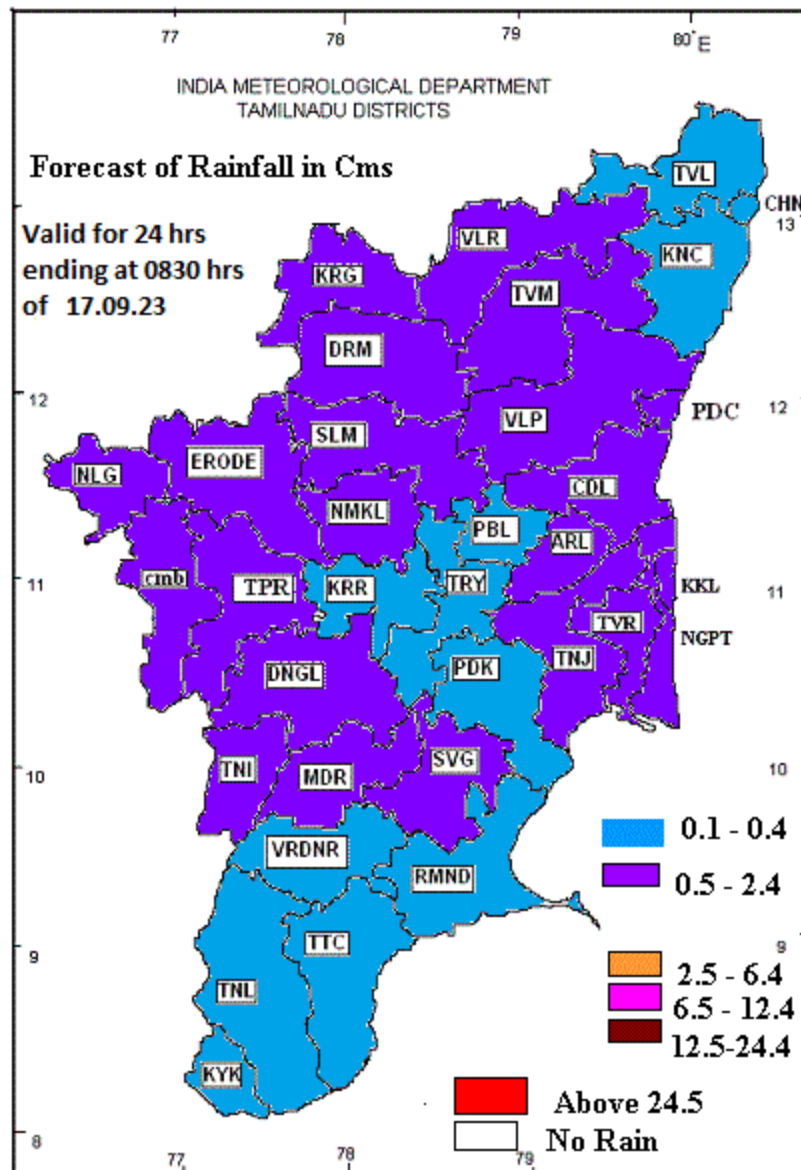












## District-wise Agromet Advisories

### Chennai

#### SMS Advisory:

(13.09.2023-17.09.2023) Light to moderate rain is likely to occur at one or two places over Tamilnadu.

#### Livestock Advisory

- 1.The livestock must be provided with clean wholesome drinking water all round the clock.
- 2.To prevent the methane and ammonia accumulation in pig sty provision of proper ventilation is necessary
- 3.To prevent water stagnation proper drainage must be provided in livestock shelter
- 4.The chicks must be given artificial heat (1 watt / chick or coal brooder for every 200 chicks for first 2 weeks of age)
- 5.The livestock must not be allowed to stand in stagnated water to prevent foot rot
- 6.The piglet must be protected from cold drafts to avoid shock, they must be provided with artificial heat source or incandescent bulb as the source of heat.

### Kancheepuram

#### SMS Advisory:

(13.09.2023-17.09.2023) Light to moderate rain is likely to occur at one or two places over Tamilnadu.

#### Livestock Advisory

- 1.The livestock must be provided with clean wholesome drinking water all round the clock.
- 2.To prevent the methane and ammonia accumulation in pig sty provision of proper ventilation is necessary
- 3.To prevent water stagnation proper drainage must be provided in livestock shelter
- 4.The chicks must be given artificial heat (1 watt / chick or coal brooder for every 200 chicks for first 2 weeks of age)
- 5.The livestock must not be allowed to stand in stagnated water to prevent foot rot
- 6.The piglet must be protected from cold drafts to avoid shock, they must be provided with artificial heat source or incandescent bulb as the source of heat.

#### Agricultural advisory

##### Rice:

The forecasted weather may cause leaf folder infestation in rice crop. The farmers are advised to monitor the field, if symptoms are observed it's advised to spray Chlorantraniliprole 18.5% 150 ml/ha.

##### Groundnut:

To increase flower retention , pod filling and to induce drought tolerance apart from yield improvement , 2 sprays of groundnut rich @ 2 kg / acre( for each spray) at 35 DAS (50 % flowering ) and 45 DAS (pod development stage). To provide adequate drainage facility in lowland areas.

##### Brinjal:

Due to day temperature sucking pest incidence may be increase. To control this, spray imidachloprid 0.3 ml/ litre. To provide adequate drainage facility in lowland areas.

##### Coconut:

To control red palm weevil in coconut, apply neem seed kernel powder + sand (1:2) @150 g per palm in the base of the 3 inner most leaves in the crown. To control rhinoceros beetle, setup Rhino lure pheromone trap @ 2 traps/acre. To provide adequate drainage facility in lowland areas.

## Villupuram

### SMS Advisory:

(13.09.2023-17.09.2023) Light to moderate rain is likely to occur at one or two places over Tamilnadu.

### Livestock Advisory

- 1.The livestock must be provided with clean wholesome drinking water all round the clock.
- 2.To prevent the methane and ammonia accumulation in pig sty provision of proper ventilation is necessary
- 3.To prevent water stagnation proper drainage must be provided in livestock shelter
- 4.The chicks must be given artificial heat (1 watt / chick or coal brooder for every 200 chicks for first 2 weeks of age)
- 5.The livestock must not be allowed to stand in stagnated water to prevent foot rot
- 6.The piglet must be protected from cold drafts to avoid shock, they must be provided with artificial heat source or incandescent bulb as the source of heat.

### Agricultural advisory

#### Rice:

Due to prevailing weather condition possible for thrips infestation in paddy crop. To manage them, spray thiamethoxam 8.0g/ for 20 cent of nursery field. In transplanted field spray Azadiractin 400 ml/acre or thiamethoxam 40 g/ac. Due to prevailing weather condition leaf folder and stem borer infestation is found in paddy crop. To manage them, spray carbosulfan 400 ml/ac or cartap hydrochloride 600 g/ac during morning or evening hours.

#### Groundnut:

Due to prevailing weather conditions possible for thrips infestation in groundnut crop. To control spray quinalphos 25 EC 560 ml/ac. Due to prevailing weather conditions possible for leaf miner infestation in groundnut crop. To control set light trap @ 1/ha between 8 and 11 pm at ground level and spray quinalphos 25 EC 560 ml/ac.

#### Sugarcane:

Crown mealy bug and pokkahboeng disease of sugarcane observed in field. Symptoms are stunted growth, terminal shoot drying, yellowing of leaf and weakening of cane. To control follow integrated management practices.

Sett treatment - carbendazim 50 WP @ 2 g/lit for 30 min & imidacloprid 70 WS @ 1.5 ml/lit. for 5 min before planting,

Monitor ant movement in the border rows at regular intervals,

Prophylactic measure - in endemic area, field borders (3 rows) spray imidacloprid 17.8 SL @ 3 ml/10 lit (or) chlorantraniliprole 18.5 SC 4 ml /10 lit (or) clothianidin 50 WDG @ 5g/10 lit (or) spirotetramet 150 OD @ 12.5 ml/10 lit (or) Flonicamid 50% WG @ 3 g/10 lit. If infestation crosses ETL (10%), the insecticide application should be repeated at 20 days interval with rotation of above insecticides. Before spraying ensure de-trashing and it should be done at 5 months after planting.

If Pokkahboeng noticed, spray carbendazim 50 WP @ 2 g/lit or propiconazole 25 EC @ 2 ml/lit + sticking agent @ 1 ml/lit 3 times at 20 days interval. Spray should be directed towards central whorl for better control

Ratoon cropping should be discouraged after two ratooning in the endemic areas

#### Maize:

Maize growing farmers the fall army worm infection apply neem cake @ 250 kg/ha (farmer contribution)

Seed treatment with cyantraniliprole 19.8% + thiamethoxam 19.8 FS @ 4.0 ml/kg seed Border cropping with gingelly or cowpea or sorghum

Installation of pheromone traps @ 12 nos./ha

Spraying of chlorantraniliprole 18.5 SC @ 0.4 ml/l (or) flubendiamide 20 WG (0.5 g/l) at 15-20 days of emergence (DAE)

Application of ememectin benzoate 5 SG (0.4 g/l) or spinetoram 11.7 SC (0.5 ml/l) at 35-40 DAE at late whorl stage and 60 DAE.

## Tiruvannamalai

SMS Advisory:

(13.09.2023-17.09.2023) Light to moderate rain is likely to occur at one or two places over Tamilnadu.

Livestock Advisory

- 1.The livestock must be provided with clean wholesome drinking water all round the clock.
- 2.To prevent the methane and ammonia accumulation in pig sty provision of proper ventilation is necessary
- 3.To prevent water stagnation proper drainage must be provided in livestock shelter
- 4.The chicks must be given artificial heat (1 watt / chick or coal brooder for every 200 chicks for first 2 weeks of age)
- 5.The livestock must not be allowed to stand in stagnated water to prevent foot rot
- 6.The piglet must be protected from cold drafts to avoid shock, they must be provided with artificial heat source or incandescent bulb as the source of heat.

Agricultural advisory

Rice:

Spray the TNAU Rice reap @ 3kg / acre by dissolving in 200 litre of water after adding required quantity of wetting agent at booting stage at 10days interval. It improves spikelet fertility, grain filling rate, tolerance against drought and high temperature.

Groundnut:

To increase flower retention , pod filling and to induce drought tolerance apart from yield improvement , 2 sprays of groundnut rich @ 2 kg / acre( for each spray) at 35 DAS (50 % flowering ) and 45 DAS (pod development stage).

Coconut:

To control red palm weevil in coconut, apply neem seed kernel powder + sand (1:2) @150 g per palm in the base of the 3 inner most leaves in the crown. To control rhinoceros beetle, setup Rhino lure pheromone trap @ 2 traps/acre.

Banana:

High wind speed (>10 kmph) is expected on forthcoming days, so prop up 5 month old banana trees.

## Tiruvallur

From extended range forecast Normal rainfall, Normal minimum temperature and maximum temperature expected for the period of 17.09.2023 to 23.09.2023 over Tamil Nadu. Very light to light rainfall expected in the forthcoming days. So, farmers are advised to spray insecticides or fungicides with sticking agent.

Crop(Varieties)	Crop Specific Advisory
-----------------	------------------------

RICE	1. Harvest the mature crops; 2. Farmers were advised to prepare nurseries for the upcoming samba season and recommended to utilize the past and prevailing weather conditions to prepare the land for cultivation; 3. Seed Treatment- Treat the seeds with talc based formulation of Bacillus subtilis 10g/kg of seed and soak in 1lit of water overnight; 4. Stem bore- Spray Azadirachtin 0.03% 400 ml (Or) Flubendiamide 20% WG 50g per acre in 200 litres of water; 5. Leaf folder- Spray Acephate 75 % SP 400 ml (Or) Spray Azadirachtin 0.03% 400ml per acre in 200 litres of water.
GROUNDNUT	1. The current weather conditions are conducive to the occurrence of rust in groundnuts. It is recommended to closely observe the incidence and apply either Spray mancozeb @ 400 g /acre or chlorothalonil @ 400 g /acre or wettable sulphur @ 1000 g /acre. If necessary, repeat the spray 15 days later; 2. Red hairy Caterpillar- i). Prepare small balls with 10 kg rice bran + 1 kg jaggery + 1 liter quinolphos broad-cost in the fields preferably in the evening times ii). Dusting of carbaryl or quinolphos @ 25-30 kg/ha would be effective in the control of young larvae; iii). Spray QuinalPhos 2 ml/lit of water may be used to control grown up caterpillars.
BLACK GRAM	Due to prevailing weather conditions may be chance to powdery mildew incidence occur in black gram fields; Spray NSKE 5% or neem oil 3% twice at 10 days interval from initial disease symptom appearance (or) Spray 10% Eucalyptus leaf extract at initiation of the disease.
Horticulture (Varieties)	Horticulture Specific Advisory
CHILLI	1. The current weather conditions are conducive to the occurrence of Cercospora leaf spot in chili. It is recommended to closely observe the incidence and spray twice at 10-15 days interval with Mancozeb 0.25% or Chlorothalonil (Kavach) 0.1%; 2. Powdery mildew- Spray wettable sulphur @ 3 g/l (or) carbendazim @ 1 g/l three sprays at 15 days interval from the first appearance of symptoms.
BRINJAL	Due to prevailing weather conditions may be chance to fruit borer infestation occurrence in brinjal fields to control spray Neem Seed Kernel Extract 5 % (or) Spray Dimethoate 30 % EC 7.0 ml/10 l. and Encourage the activity of larval parasitoids: Pristomerus testaceus, Cremastus flavoorbitalis.
JASMINE	Due to prevailing weather conditions may be chance to occur in following pest and disease jasmine fields; 1. Blossom midge- Spray Chlorantraniliprole 18.5 SC @ 0.5 ml/lit (or) Spray Novaluron 10 EC 3ml/lit; 2. Bud worms by applying Thiacloprid 240 SC @ 1 ml per liter of water or Spinosad 45 SC at a concentration of 0.5 ml per liter of water; 3. Root rot- Soil drenching with trifloxystrobin + tebuconazole @ 0.75 g/litre or difenoconazole @ 0.5ml /l.

## Vellore

As per the IMD extended range forecast (ERF), normal rainfall and temperature is likely over Tamil Nadu and Puducherry during September 17th to 23th 2023. Prevailing weather condition is favorable for pest/disease incidence for all crops. Farmers are advised to monitor their field and take necessary plant protection measures based on symptoms of damage. Very light to light rainfall expected in the forthcoming days. So, farmers are advised to spray insecticides or fungicides with sticking agent.

Crop(Varieties)	Crop Specific Advisory
RICE	Spray the TNAU Rice reap @ 3kg / acre by dissolving in 200 litre of water after adding required quantity of wetting agent at booting stage at 10days interval. It improves spikelet fertility, grain filling rate, tolerance against drought and high temperature.
GROUNDNUT	To increase flower retention , pod filling and to induce drought tolerance apart from yield improvement , 2 sprays of groundnut rich @ 2 kg / acre( for each spray) at 35 DAS (50 % flowering ) and 45 DAS (pod development stage).
Horticulture(Varieties)	Horticulture Specific Advisory
COCONUT	To control red palm weevil in coconut, apply neem seed kernel powder + sand (1:2) @150 g per palm in the base of the 3 inner most leaves in the crown. To control rhinoceros beetle, setup Rhino lure pheromone trap @ 2 traps/acre.
BANANA	High wind speed (>10 kmph) is expected on forthcoming days, so prop up 5 month old banana trees.
Live Stock(Varieties)	Live Stock Specific Advisory
COW	If dairy exotic cattle when kept for grazing in open field they will be affected with heat stress. Frothy salivation, rapid respiration, higher body temperature, loss of milk production , abortion are the signs. This can be prevented by drenching (administering) 20 gram of amino biotic mix in 1 liter of water. This can be given daily in dairy cattle.
GOAT	In organic livestock farming the deworming of sheep and goat can be done by oral application of herbal anthelmintic bolus namely Bolus wormolex-H.S. One Bolus at morning, one Bolus at evening can be given for three consecutive days. This can be repeated once in two months.
Poultry(Varieties)	Poultry Specific Advisory
CHICK	Due to day temperature in broiler or after transport action of grower chicks/ adult birds they will prone to heat stroke. The birds will respire with sound, body temperature will be more and death will occur due to heat stroke. To prevent heat stroke liquid Vita Booster at 15 ml / 100 birds can be given mixing with drinking water at 9 am to 5.00 pm.

## Cuddalore

From extended range forecast normal rainfall, minimum temperature and maximum temperature expected for the period of 17.09.2023 to 23.09.2023 over Tamil Nadu. Utilizing weather conditions prepare land for samba rice cultivation.

Crop(Varieties)	Crop Specific Advisory
RICE	Due to prevailing weather condition possible for thrips infestation in paddy crop. To manage them, spray thiamethoxam 8.0g/ for 20 cent of nursery field. In transplanted field spray Azadiractin 400 ml/acre or thiamethoxam 40 g/ac.
RICE	Due to prevailing weather condition leaf folder and stem borer infestation is found in paddy crop. To manage them, spray carbosulfan 400 ml/ac or cartap hydrochloride 600 g/ac during morning or evening hours.



GROUNDNUT	1. Due to prevailing weather conditions possible for thrips infestation in groundnut crop. To control spray quinalphos 25 EC 560 ml/ac. 2. Due to prevailing weather conditions possible for leaf miner infestation in groundnut crop. To control set light trap @ 1/ha between 8 and 11 pm at ground level and spray quinalphos 25 EC 560 ml/ac.
SUGARCANE	Crown mealy bug and pokkahboeng disease of sugarcane observed in field. Symptoms are stunted growth, terminal shoot drying, yellowing of leaf and weakening of cane. To control follow integrated management practices. 1. Sett treatment - carbendazim 50 WP @ 2 g/lit for 30 min & imidacloprid 70 WS @ 1.5 ml/lit. for 5 min before planting, 2. Monitor ant
	movement in the border rows at regular intervals, 3. Prophylactic measure - in endemic area, field borders (3 rows) spray imidacloprid 17.8 SL @ 3 ml/10 lit (or) chlorantraniliprole 18.5 SC 4 ml /10 lit (or) clothianidin 50 WDG @ 5g/10 lit (or) spirotetramet 150 OD @ 12.5 ml/10 lit (or) Flonicamid 50% WG @ 3 g/10 lit. If infestation crosses ETL (10%), the insecticide application should be repeated at 20 days interval with rotation of above insecticides. Before spraying ensure de-trashing and it should be done at 5 months after planting. 4. If Pokkahboeng noticed, spray carbendazim 50 WP @ 2 g/lit or propiconazole 25 EC@ 2 ml/lit + sticking agent @ 1 ml/lit 3 times at 20 days interval. Spray should be directed towards central whorl for better control 5. Ratoon cropping should be discouraged after two ratooning in the endemic areas
MAIZE	1. Maize growing farmers the fall army worm infection apply neem cake @ 250 kg/ha (farmer contribution) 2. Seed treatment with cyantraniliprole 19.8% + thiamethoxam 19.8 FS @ 4.0 ml/kg seed 3. Border cropping with gingelly or cowpea or sorghum 4. Installation of pheromone traps @ 12 nos./ha 5. Spraying of chlorantraniliprole 18.5 SC @ 0.4 ml/l (or) flubendiamide 20 WG (0.5 g/l) at 15-20 days of emergence (DAE) 6. Application of emamectin benzoate 5 SG (0.4 g/l) or spinetoram 11.7 SC (0.5 ml/l) at 35-40 DAE at late whorl stage and 60 DAE.

## Coimbatore

### Agro Advisory

Crop	Stage	Advisory
General		Light rainfall in plains and moderate to heavy rainfall along the western Ghats is expected with high wind speed of 10 - 20 km/hr during next five days. The Coimbatore and Tiruppur districts may have very high windspeed (> 14 km/hr). With the receipt of anticipated rainfall dry lands may be prepared and sown with north east monsoon crops such as groundnut and millets.
Rice	Sowing	Anticipating rainfall, samba season nursery sowing may be taken up for medium duration rice. In recently sown nurseries, pond 2.5 cm water in the evening and drain in the morning to avoid summer saluting of sown seeds by rain drops. Treat the seeds with Bacillus subtilis @10g/kg of seeds. If blast disease symptom noticed, spray Azoxystrobin @1ml/liter.
Sugarcane	Vegetative	Since rainfall with squally wind is expected, dethrash and propping in five months old sugarcane crop is recommended against the lodging.

		If any Top rot symptoms noticed, spray propiconazole @ 1ml/liter + Imidacloprid 17.5 SL @ 0.3ml / liter to prevent pokkah boeng disease of sugarcane.
Cotton	Flowering	Since rainfall is expected drainage may be provided to both rain fed and irrigated cotton crops. To avoid the flower shedding, spray 40 PPM NAA in 60 - 90 days after sowing. (40 mg of NAA dissolved in 1 liter of water will give the concentration of 40 PPM). To arrest the terminal growth nipping the terminal portion of the main stem beyond the 15 <sup>th</sup> node is advised. If alternative leaf blight disease symptom noticed, spray mancozep @ 2g/lit
Banana	Above 5 months old	Rain fall with 16-20 km/hour wind speed may cause lodging in banana. Provide support to five months and above old banana. Spray Propiconazole @ 1ml/liter +wetting agent @1ml/lit to prevent sigatoka leaf spot disease.
Turmeric	Vegetative	Turmeric is at bulking stage, which is critical for both moisture stress and excess water. Hence, care to keep sufficient moisture and avoid excess moisture or over dry. Prevailing high relative humidity and wind speed would spread the spores of turmeric leaf spot from endemic area. Spray Mancozeb @ 1 kg/ha to control leaf blotch disease. Apply <i>Trichoderma viride</i> @ 2.5 kg/ha mixing with 250kg of FYM in soil to prevent rhizome rot disease.
Animal Husbandry		Water stagnation must be avoided in animal shed against mosquito.

#### SMS advisory

With the receipt of anticipated rainfall dry lands may be prepared and sown with north east monsoon crops such as groundnut and millets.

## Erode

#### Agro Advisory

Crop	Stage	Advisory
General		Light rainfall in plains and moderate to heavy rainfall along the western Ghats is expected with high wind speed of 10 - 20 km/hr during next five days. The Coimbatore and Tiruppur districts may have very high windspeed (> 14 km/hr). With the receipt of anticipated rainfall dry lands may be prepared and sown with north east monsoon crops such as groundnut and millets.
Rice	Sowing	Anticipating rainfall, samba season nursery sowing may be taken up for medium duration rice. In recently sown nurseries, pond 2.5 cm water in the evening and drain in the morning to avoid summer saluting of sown seeds by rain drops. Treat the seeds with <i>Bacillus subtilis</i> @10g/kg of seeds. If blast disease symptom noticed, spray Azoxystrobin @1ml/liter.
Sugarcane	Vegetative	Since rainfall with squally wind is expected, dethrash and propping in five months old sugarcane crop is recommended against the lodging.

		If any Top rot symptoms noticed, spray propiconazole @ 1ml/liter + Imidacloprid 17.5 SL @ 0.3ml / liter to prevent pokkah boeng disease of sugarcane.
Cotton	Flowering	Since rainfall is expected drainage may be provided to both rain fed and irrigated cotton crops. To avoid the flower shedding, spray 40 PPM NAA in 60 - 90 days after sowing. (40 mg of NAA dissolved in 1 liter of water will give the concentration of 40 PPM). To arrest the terminal growth nipping the terminal portion of the main stem beyond the 15 <sup>th</sup> node is advised. If alternative leaf blight disease symptom noticed, spray mancozep @ 2g/lit
Banana	Above 5 months old	Rain fall with 10-12 km/hour wind speed may cause lodging in banana. Provide support to five months and above old banana. Spray Propiconazole @ 1ml/liter +wetting agent @1ml/lit to prevent sigatoka leaf spot disease.
Turmeric	Vegetative	Turmeric is at bulking stage, which is critical for both moisture stress and excess water. Hence, care to keep sufficient moisture and avoid excess moisture or over dry. Prevailing high relative humidity and wind speed would spread the spores of turmeric leaf spot from endemic area. Spray Mancozeb @ 1 kg/ha to control leaf blotch disease. Apply <i>Trichoderma viride</i> @ 2.5 kg/ha mixing with 250kg of FYM in soil to prevent rhizome rot disease.
Animal Husbandry		Water stagnation must be avoided in animal shed against mosquito.

#### SMS advisory

With the receipt of anticipated rainfall dry lands may be prepared and sown with north east monsoon crops such as groundnut and millets.

## Tiruppur

#### Agro Advisory

Crop	Stage	Advisory
General		Light rainfall in plains and moderate to heavy rainfall along the western Ghats is expected with high wind speed of 10 - 20 km/hr during next five days. The Coimbatore and Tiruppur districts may have very high windspeed (> 14 km/hr). With the receipt of anticipated rainfall dry lands may be prepared and sown with north east monsoon crops such as groundnut and millets.
Sugarcane	Vegetative	Since rainfall with squally wind is expected, dethrash and propping in five months old sugarcane crop is recommended against the lodging. If any Top rot symptoms noticed, spray propiconazole @ 1ml/liter + Imidacloprid 17.5 SL @ 0.3ml / liter to prevent pokkah boeng disease of sugarcane.
Cotton	Flowering	Since rainfall is expected drainage may be provided to both rain fed and irrigated cotton crops. To avoid the flower shedding, spray 40 PPM NAA in 60 - 90 days after sowing. (40 mg of NAA dissolved in 1 liter of water

		will give the concentration of 40 PPM). To arrest the terminal growth nipping the terminal portion of the main stem beyond the 15th node is advised. If alternative leaf blight disease symptom noticed, spray mancozep @ 2g/lit
Banana	Above 5 months old	Rain fall with 14-20km/hour wind speed may cause lodging in banana. Provide support to five months and above old banana. Spray Propiconazole @ 1ml/liter +wetting agent @1ml/lit to prevent sigatoka leaf spot disease.
Animal Husbandry		Water stagnation must be avoided in animal shed against mosquito.

#### SMS advisory

With the receipt of anticipated rainfall dry lands may be prepared and sown with north east monsoon crops such as groundnut and millets.

## Nilgiris

Soil testing has to be done before any cropping programme. Due to continuous rainfall, drainage facilities have to be created to drain the excess water in vegetable fields. Farmers, who are ready to take up the sowing of hilly vegetables during September 2023, seeds can be treated with *Trichoderma viride* @ 4g/kg or *Bacillus subtilis* @ 10g/kg to manage seed and soil borne pathogens. To manage aphids and jassids in vegetables, foliar application of imidacloprid 70 WG 0.5ml/lit. is recommended.

Horticulture(Varieties)	Horticulture Specific Advisory
GINGER	To manage soft rot in Ginger, Provide adequate drainage facilities, select healthy and disease - free seed rhizomes and treat the seed rhizomes with mancozeb or copper oxychloride @ 3 g/l or 200 ppm streptomycin for 30 minutes. In the field, drench the beds with copper oxychloride @ 2.5 g/l or 1% Bordeaux mixture
GARLIC	Foliar application of water-soluble micro nutrient mixture @ 0.5 g/liter of water during 30, 45 and 60 days after planting may be done to increase the Garlic bulb yield

## Nilgiris Block level

### Coonoor, Gudalur, Kotagiri and Ooty Blocks

Soil testing has to be done before any cropping programme. Due to continuous rainfall, drainage facilities have to be created to drain the excess water in vegetable fields. Farmers, who are ready to take up the sowing of hilly vegetables during September 2023, seeds can be treated with *Trichoderma viride* @ 4g/kg or *Bacillus subtilis* @ 10g/kg to manage seed and soil borne pathogens. To manage aphids and jassids in vegetables, foliar application of imidacloprid 70 WG 0.5ml/lit. is recommended.

Horticulture(Varieties)	Horticulture Specific Advisory
GINGER	To manage soft rot in Ginger, Provide adequate drainage facilities, select healthy and disease - free seed rhizomes and treat the seed rhizomes with mancozeb or copper oxychloride @ 3 g/l or 200 ppm streptomycin for 30 minutes. In the field, drench the beds with copper oxychloride @ 2.5 g/l or 1% Bordeaux mixture
GARLIC	Foliar application of water-soluble micro nutrient mixture @ 0.5 g/liter of water during 30, 45 and 60 days after planting may be done to increase the Garlic bulb yield

## Ariyalur, Karur, Nagapattinam, Perambalur, Thanjavur and Tiruvarur

### Agro Advisory

Crop	Stage	Advisory
Rice	Nursery	Prepare nursery for Thaladi rice cultivation by utilizing the expected rain.
		Spread rice straw over nursery bed to avoid scattering of sown seeds due to expected rain.
Cotton	Harvest	Considering expected rainfall, pick the matured cotton bolls before rain.
Banana		Provide support with wooden poles to avoid lodging of tree due to rain and wind.
Cattle	Cow and Goat	This situation is favorable for the development of Aflatoxin infection in the Corn kernels and Paddy Straw, which may affect the health of the cattle. To save them from infection, dry the Corn

### SMS advisory

Spread rice straw over nursery bed to avoid scattering of sown seeds due to expected rain.

## Tiruchirapalli

Tamilnadu's average rainfall is likely to be normal during this week from 13.09.2023 to 19.09.2023 (3.64 mm to 3.85 mm). To know the precaution of thunder and lightning, download DAMINI app and use it wisely.

Crop(Varieties)	Crop Specific Advisory
RICE	Due to prevailing weather Green Leafhopper infestation may occur in paddy at nursery stage. To control thrips infestation spray Phosphamidon 40 SL 50 m
RICE	Due to prevailing weather Leaf Folder infestation may occur in paddy at nursery stage. To control • Release Trichogramma chilonis @2 cc (40,000/ac) thrice at 37, 44 and 51 days
SUNFLOWER	In Sunflower due to prevailing condition there is a chance of occurrence of Wilt diseases. To Control, Seed treatment with Captan or Carboxin 3g/kg and drenching the

	base of the plant with Carbendazim 1g/lit.
GROUNDNUT	In Groundnut due to prevailing condition there is a chance of occurrence of Leaf Spot. To Control, spray Spray 10% Calotropis leaf extract.
Horticulture(Varieties)	Horticulture Specific Advisory
COCONUT	To control & decreases the button shedding in coconut, Give root feeding of the coconut tonic @ 200 ml/palm at 6-month interval. Coconut tonic (Rs. 310 / litre) available at KVK, Sirugamani, Trichy – 115. Contact: 6381186765.
ONION	In onion due to prevailing condition there is a chance of Thrips attack. To Control, Spray insecticides - profenofos @ 0.05%.
Live Stock(Varieties)	Live Stock Specific Advisory
COW	To avoid mastitis disease in milching animals use potassium permanganate for cleaning the udder before and after milking.
Poultry(Varieties)	Poultry Specific Advisory
CHICKEN	Native poultry reared under integrated method in case infested with lice, must be given medicated bath. A sponge dipped in 1 ml of butox mixed in one litre of water could be rubbed all over the body on a bright sunny day. Care must be exercised to avoid eyes ear lobe and mouth.

## Tiruchirapalli Block level

### Andanallur, Lalgudi, Manachanellur, Manapparai, Manikandam, Marungapuri Blocks

Tamilnadu's average rainfall is likely to be normal during this week from 13.09.2023 to 19.09.2023 (3.64 mm to 3.85 mm). To know the precaution of thunder and lightning, download DAMINI app and use it wisely.

Crop(Varieties)	Crop Specific Advisory
RICE	Due to prevailing weather Green Leafhopper infestation may occur in paddy at nursery stage. To control thrips infestation spray Phosphamidon 40 SL 50 m
RICE	Due to prevailing weather Leaf Folder infestation may occur in paddy at nursery stage. To control • Release Trichogramma chilonis @2 cc (40,000/ac) thrice at 37, 44 and 51 days
SUNFLOWER	In Sunflower due to prevailing condition there is a chance of occurrence of Wilt diseases. To Control, Seed treatment with Captan or Carboxin 3g/kg and drenching the base of the plant with Carbendazim 1g/lit.

GROUNDNUT	In Groundnut due to prevailing condition there is a chance of occurrence of Leaf Spot. To Control, spray Spray 10% Calotropis leaf extract.
Horticulture(Varieties)	Horticulture Specific Advisory
COCONUT	To control & decreases the button shedding in coconut, Give root feeding of the coconut tonic @ 200 ml/palm at 6-month interval. Coconut tonic (Rs. 310 / litre) available at KVK, Sirugamani, Trichy – 115. Contact: 6381186765.
ONION	In onion due to prevailing condition there is a chance of Thrips attack. To Control, Spray insecticides - profenofos @ 0.05%.
Live Stock(Varieties)	Live Stock Specific Advisory
COW	To avoid mastitis disease in milching animals use potassium permanganate for cleaning the udder before and after milking.
Poultry(Varieties)	Poultry Specific Advisory
CHICKEN	Native poultry reared under integrated method in case infested with lice, must be given medicated bath. A sponge dipped in 1 ml of butox mixed in one litre of water could be rubbed all over the body on a bright sunny day. Care must be exercised to avoid eyes ear lobe and mouth.

### **Musiri, Pullambadi, Tattayangarpettai, Thiruverambur, Thottiam, Turaiyur Blocks**

Tamilnadu's average rainfall is likely to be normal during this week from 13.09.2023 to 19.09.2023 (3.64 mm to 3.85 mm). To know the precaution of thunder and lightning, download DAMINI app and use it wisely.

Crop(Varieties)	Crop Specific Advisory
RICE	Due to prevailing weather Leaf Folder infestation may occur in paddy at nursery stage. To control • Release Trichogramma chilonis @2 cc (40,000/ac) thrice at 37, 44 and 51 days
GROUNDNUT	In Groundnut due to prevailing condition there is a chance of occurrence of Leaf Spot. To Control, spray Spray 10% Calotropis leaf extract.
Horticulture(Varieties)	Horticulture Specific Advisory
COCONUT	To control & decreases the button shedding in coconut, Give root feeding of the coconut tonic @ 200 ml/palm at 6-month interval. Coconut tonic (Rs. 310 / litre) available at KVK, Sirugamani, Trichy – 115. Contact: 6381186765.

ONION	In onion due to prevailing condition there is a chance of Thrips attack. To Control, Spray insecticides - profenofos @ 0.05%.
Live Stock(Varieties)	Live Stock Specific Advisory
COW	To avoid mastitis disease in milching animals use potassium permanganate for cleaning the udder before and after milking.
Poultry(Varieties)	Poultry Specific Advisory
CHICKEN	Native poultry reared under integrated method in case infested with lice, must be given medicated bath. A sponge dipped in 1 ml of butox mixed in one litre of water could be rubbed all over the body on a bright sunny day. Care must be exercised to avoid eyes ear lobe and mouth.

### Uppiliapuram & Vaiyampatti Blocks

Tamilnadu's average rainfall is likely to be normal during this week from 13.09.2023 to 19.09.2023 (3.64 mm to 3.85 mm). To know the precaution of thunder and lightning, download DAMINI app and use it wisely.

Crop(Varieties)	Crop Specific Advisory
RICE	Due to prevailing weather Green Leafhopper infestation may occur in paddy at nursery stage. To control thrips infestation spray Phosphamidon 40 SL 50 m
Horticulture(Varieties)	Horticulture Specific Advisory
COCONUT	To control & decrease the button shedding in coconut, Give root feeding of the coconut tonic @ 200 ml/palm at 6-month interval. Coconut tonic (Rs. 310 / litre) available at KVK, Sirugamani, Trichy – 115. Contact: 6381186765.
ONION	In onion due to prevailing condition there is a chance of Thrips attack. To Control, Spray insecticides - profenofos @ 0.05%.
Live Stock(Varieties)	Live Stock Specific Advisory
COW	To avoid mastitis disease in milching animals use potassium permanganate for cleaning the udder before and after milking.
Poultry(Varieties)	Poultry Specific Advisory
CHICKEN	Native poultry reared under integrated method in case infested with lice, must be given medicated bath. A sponge dipped in 1 ml of butox mixed in one litre of water could be rubbed all over the body on a bright sunny day. Care must be exercised to avoid eyes ear lobe and mouth.



## Dindigul

SMS Advisory	Chances of Moderate rain on 13, 17 Sep & light rain during 14, 15, 16 Sep. Maximum temperature would be in the range of 35°C to 37°C and the minimum temperature would be between 24°C - 26°C. Generally cloudy sky will appear for the next five days. Wind expected with the speed of 10-12 Kmph from, West direction.
--------------	--

### General Advisory:

Since some amount of rainfall is received recently, and rainfall is expected for the coming days, farmers can plan for ploughing and land preparation activities. Farmers are advised to postpone the spraying activities for a short while and to take necessary steps for rain water harvesting.

Wind with the speed of 10 to 12 kmph is expected for the next five days. Hence farmers are advised to provide propping in sugarcane and to provide adequate support for crops like Banana, Papaya, Guava and Moringa, to prevent from lodging. For Gourds check the structures /pandhals for damages in the strings and poles and provide adequate support. Postpone the spraying activity.

Light to Moderate rain with thunderstorm & lightning is likely to occur at one or two places over district on 13th & 14th September 2023. Farmers are advised to take precautionary measures while grazing/herding the sheep, goat, cow on agriculture land for manuring purpose. Do not allow the animals to graze outside, standing near the trees or electric poles. Provide safe shelter for your livestock. . To safeguard your animals from lightning and thunderstorm, remove the metal bells tied to the necks of animals.

Weather Based Agro-Advisories: (Sugarcane, Cotton & Animal Husbandry).

### Sugarcane:

Farmers can plan for the fertilizer application process for the Sugarcane Crop.

Apply 225 kg of nitrogen and 112 ½kg of K<sub>2</sub>O/ha in three equal splits at 30, 60 and 90 days.

Mix 12 packets (2400g/ha) of Azospirillum with 25kg of FYM and 25kg soil and apply near the clumps on the 30th day of planting. Repeat the same on the 60th day with another 12 packets (2400gm).

### Cotton:

Farmers are advised to start the weeding operation in cotton.

Apply Fluchloralin @ 2 litres/ha., three days after sowing, using a hand-operated sprayer fitted with deflecting or fan-type nozzle, it will control the weed up to the 25th day.

The second weeding should be done with hoe and hand weed between the 30th to 40th day after sowing.

### Animal Husbandry:

The (livestock) calf may be affected by tiredness, hence, the cattle rearers are advised to feed their calf with 30gms of mineral mixture per day.

Also, de-worm your calf on a regular schedule with the support of a nearby veterinarian.

## Madurai

SMS Advisory	Chances of light rain during 13, 14, 15, 16 & 17 Sep. Maximum temperature would be in the range of 35°C to 37°C and the minimum temperature would be between 24°C - 26°C. Generally cloudy sky will appear for the next five days. Wind expected with the speed of 10-12 Kmph from, Northwest, Southwest & West directions.
--------------	---

#### General Advisory:

Since some amount of rainfall is received recently, and rainfall is expected for the coming days, farmers can plan for ploughing and land preparation activities. Farmers are advised to postpone the spraying activities for a short while and to take necessary steps for rain water harvesting.

Wind with the speed of 10 to 12 kmph is expected for the next five days. Hence farmers are advised to provide propping in sugarcane and to provide adequate support for crops like Banana, Papaya, Guava and Moringa, to prevent from lodging. For Gourds check the structures /pandhals for damages in the strings and poles and provide adequate support. Postpone the spraying activity.

Light to Moderate rain with thunderstorm & lightning is likely to occur at one or two places over district on 13th & 14th September 2023. Farmers are advised to take precautionary measures while grazing/herding the sheep, goat, cow on agriculture land for manuring purpose. Do not allow the animals to graze outside, standing near the trees or electric poles. Provide safe shelter for your livestock. . To safeguard your animals from lightning and thunderstorm, remove the metal bells tied to the necks of animals.

Weather Based Agro-Advisories: (Paddy, Sorghum & Animal Husbandry).

#### Paddy:

The incidence of Whorl maggot is expected in paddy. The symptoms show yellowish-white longitudinal marginal blotching with a hole. Leaves shrivelled plant, stunted and drooping of young leaves near the tip.

Remove the alternate hosts from the field, and apply the optimum recommendation of potash fertilizer.

To control spray Buprofezin @ 350 ml/acre.

#### Sorghum:

Farmers cultivating rain-fed sorghum can start sowing during this season. Places with an average rainfall of 250-300 mm are the most suitable.

To withstand drought, the seeds should be hardened and then sown. Soak the seeds in a solution mixed with 20g of potassium di-hydrogen phosphate per litre of water for 6 hours and then dry back to their original moisture content in the shade.

#### Animal Husbandry:

The (livestock) calf may be affected by tiredness, hence, the cattle rearers are advised to feed their calf with 30gms of mineral mixture per day.

Also, de-worm your calf on a regular schedule with the support of a nearby veterinarian.

## Pudukottai

Extended Range Forecast For Tamil Nadu 17 .09.2023 to 23 .09.2023. During the Week from 17 th to 23 th September Normal Rainfall . Maximum temperature and minimum temperature Normal is likely to occur over Tamilnadu. Distribute 80 to 100 liters of water per day in 4 installments to the cattle as the maximum temperature continues to rise.

Crop(Varieties)	Crop Specific Advisory
BLACKGRAM	Farmers are advised to take up showing on high yielding green gram variety (VBN– 3 and /VBN – 4 ) and black gram variety ( VBN – 8 and VBN 10 ) with available moisture on receipt of Seed treatment with Trichoderma viridae 4g/kg of seed (or) Pseudomonas fluorescens 10 g/kg of seed will be effective against root rot disease in black gram.
	The incidence of false smut may be noticed in rice. The damage symptoms are individual rice grain transformed into a mass of yellow fruiting bodies and infected grain has

RICE	greenish smut balls with a velvety appearance. If symptoms are observed in field, spray Propiconazole 25 EC @ 200 ml/ac or Copper hydroxide 77% WP 500 g/ac with 200 litre of water.
Horticulture(Varieties)	Horticulture Specific Advisory
BANANA	Farmers are requested to sow cowpea as intercrop in between the rows of banana to control the weeds and conserve the moisture while planting the banana under the rabi season.
TOMATO	The incidence of Mosaic virus disease is noticed in Tomato crops. The disease is characterized by light and dark green mottling on the leaves often accompanied by wilting of young leaves on sunny days when plants first become infected. The affected plant appears stunted, pale green and spindly. Soak the seeds in a solution of Trisodium Phosphate (90 g/litre of water) a day before sowing helps to reduce the disease incidence. The seeds should be thoroughly rinsed and dried in shade. Seedlings infected with the viral disease should not be used for transplanting. Crop rotation with crops other than tobacco, potato, chilli, capsicum, brinjal, etc. should be undertaken.
COCONUT	Prevailing hot weather may be favorable for spirality white fly in Coconut. Hence farmers are requested to monitor the incidence and fix yellow sticky traps in 5-6 places / acre.
Drumstick	The prevailing weather condition is favorable for fruit fly incidence in drumstick. To control the above pest, spray of Neem Seed Kernel Extract 5% is recommended.
BRINJAL	To manage the pest occurrence in vegetable crop fields, farmers are advised to install a Solar light trap @ 1 No. per acre, Pheromone trap @ 8Nos. per acre and Yellow sticky traps @ 8Nos. per acre. To prevent diseases Trichoderma Viride @1kg per 500kg of farmyard manure can be applied during the last ploughing.
BANANA	The root-lesion nematodes and root knot nematodes are noticed in Banana. The nematodes-infested banana tree shows stunting and yellowing of leaves, blackish or reddish lesions on the roots. Farmers are advised to apply FYM @10kg with neem cake 250 gm per tree and intercrop with marigold or sunhemp and in situ ploughing at the time of flowering. Apply liquid formulation of Pseudomonas fluorescence @ 2lit per ha. during 2, 4 and 6 months after planting through drip irrigation.
Live Stock(Varieties)	Live Stock Specific Advisory
COW	Milk production can be protected by spraying water on the cows during the day when the temperature is high and isolating its fat. Azolla can be used as fodder.
Poultry(Varieties)	Poultry Specific Advisory
CHICK	There are chances of diarrhoea in the poultry. To protect the other birds from Diarrhoea, keep the diseased birds separately. Medicate the drinking water with 2gm Microsol or Bactrisol + 5ml Vimrol Syrup per litre of water. Medicated water should be given to all the birds for 5 days in the morning and evening time.

Others (Soil / Land Preparation)(Varieties)	Others (Soil / Land Preparation) Specific Advisory
GENERAL ADVICE	To improve the soil fertility as well as to increase the yield of crops farmers are requested to sow sunhemp , daincha or multigrains @ 20 kg acre incorporate the same with 30 – 45 days after sowing.

## Ramanathapuram

From extended range forecast, Normal rainfall, maximum and minimum temperature expected for the period of September 17 to September 23 over Tamil Nadu. Farmers are advised to apply 200 kg of gypsum per acre at the time of last ploughing for better growth of crop.

Crop(Varieties)	Crop Specific Advisory
RICE	Farmers are advised to sown short duration and drought tolerant rice varieties like Thirurkuppam 15, Aduthurai 53, Coimbatore 53 and Coimbatore 55.
RICE	Farmers are advised to harden the seed in case of rain fed direct sowing of paddy. For seed hardening, one kg of seed should be soaked in a one per cent potassium chloride solution (10 g in a liter of water) for 16 hours and then dried in the shade until it returns to its original moisture content.
RICE	In case of rain fed direct seeding of paddy, the use of mechanized sowing facilitate the possibility of maintaining the proper depth, spacing and minimize the crop loss due to dry spell.
Horticulture(Varieties)	Horticulture Specific Advisory
COCONUT	Due to the prevailing weather condition, incidence of red palm weevil expected in coconut. The damage symptoms are holes can be seen on the stem with chewed up fibres protruding out and reddish brown liquid can be seen oozing out from the hole. If symptoms are observed in coconut tree, spot application with insecticidal solution containing Imidacloprid 17.8% SL @ 1 ml with 1 liter of water.
Live Stock(Varieties)	Live Stock Specific Advisory
COW	As per the advice of the veterinary doctor, farmers are instructed to vaccinate their dairy animals against Haemorrhagic septicaemia (HS), Black Quarter (BQ) and FMD disease.
Others (Soil / Land Preparation)(Varieties)	Others (Soil / Land Preparation) Specific Advisory
RAIN WATER HARVESTING	Farmers are advised to repair the water channels, farm ponds and other water bodies to harvest the rain water.

## Sivagangai

SMS Advisory	Chances of light rain during 13, 16 & 17 Sep. Maximum temperature would be in the range of 35°C to 37°C and the minimum temperature would be between 24°C - 26°C. Generally cloudy sky will appear for the next five days. Wind expected with the speed of 10-14 Kmph from, Southwest direction.
--------------	--

### General Advisory:

Since some amount of rainfall is received recently, and rainfall is expected for the coming days, farmers can plan for ploughing and land preparation activities. Farmers are advised to postpone the spraying activities for a short while and to take necessary steps for rain water harvesting.

Wind with the speed of 10 to 14 kmph is expected for the next five days. Hence farmers are advised to provide propping in sugarcane and to provide adequate support for crops like Banana, Papaya, Guava and Moringa, to prevent from lodging. For Gourds check the structures /pandhals for damages in the strings and poles and provide adequate support. Postpone the spraying activity.

Light to Moderate rain with thunderstorm & lightning is likely to occur at one or two places over district on 13th & 14th September 2023. Farmers are advised to take precautionary measures while grazing/herding the sheep, goat, cow on agriculture land for manuring purpose. Do not allow the animals to graze outside, standing near the trees or electric poles. Provide safe shelter for your livestock. . To safeguard your animals from lightning and thunderstorm, remove the metal bells tied to the necks of animals.

Weather Based Agro – Advisories: (Important Crops: Groundnut, onion & Animal Husbandry)

### Groundnut:

To increase the flower retention and pod filling in Groundnut.

Farmers are advised to give two sprays of Groundnut rich @ 5kg/ha in 500 litres of water (for each spray). First spray, at 35 days after sowing and the second spray at 45 days after sowing.

### Onion:

Due to the prevailing weather conditions, there are chances for incense of Downy mildew in Onion. The symptoms of the disease are white downy growth appearing on the surface of the leaves. Finally, the infected leaves are dried up.

To control this, spray Propineb @ 350gm per acre. After 10 days, spray Pseudomonas @100gm + Trichoderma Viride @100gm per 10 litres of water.

### Animal Husbandry:

The (livestock) calf may be affected by tiredness, hence, the cattle rearers are advised to feed their calf with 30gms of mineral mixture per day.

Also, de-worm your calf on a regular schedule with the support of a nearby veterinarian.

## Theni

SMS Advisory	Chances of light rain during 13, 14, 15, 16 Sep & Moderate rain on 17 Sep. Maximum temperature would be in the range of 30°C to 32°C and the minimum temperature would be between 21°C - 23°C. Generally cloudy sky will appear for the next five days. Wind expected with the speed of 10-12 Kmph from, West direction.
--------------	--

#### General Advisory:

Since some amount of rainfall is received recently, and rainfall is expected for the coming days, farmers can plan for ploughing and land preparation activities. Farmers are advised to postpone the spraying activities for a short while and to take necessary steps for rain water harvesting.

Wind with the speed of 10 to 12 kmph is expected for the next five days. Hence farmers are advised to provide propping in sugarcane and to provide adequate support for crops like Banana, Papaya, Guava and Moringa, to prevent from lodging. For Gourds check the structures /pandhals for damages in the strings and poles and provide adequate support. Postpone the spraying activity.

Light to Moderate rain with thunderstorm & lightning is likely to occur at one or two places over district on 13th & 14th September 2023. Farmers are advised to take precautionary measures while grazing/herding the sheep, goat, cow on agriculture land for manuring purpose. Do not allow the animals to graze outside, standing near the trees or electric poles. Provide safe shelter for your livestock. . To safeguard your animals from lightning and thunderstorm, remove the metal bells tied to the necks of animals.

#### Weather Based Agro-Advisories: (Tomato, Groundnut & Animal Husbandry)

##### Tomato:

There is a chance of the spread of soil-borne diseases in the tomato crop planted under rain-fed conditions.

To control such diseases, apply biocontrol agents like *Trichoderma viride* and *Pseudomonas fluorescense* each at 5 kg per acre well mixed with adequate farm yard manure.

##### Cotton:

Nutrition disorders may be found in Cotton. In the case of Zinc deficient soils, apply ZnSO<sub>4</sub> @ 50kg/ha as basal or ZnSO<sub>4</sub> 0.5% spray thrice at 45, 60 and 75 DAS.

When reddening occurs in leaves apply 5% MgSO<sub>4</sub>, Urea (1%) and ZnSO<sub>4</sub> (0.10%) as a foliar spray on the 50th and 80th day to correct this malady.

In Mg deficient areas apply MgSo<sub>4</sub> @ 20 kg/ha basally. Need-based foliar spray of 2% MgSo<sub>4</sub> + 1% Urea during boll formation stage.

##### Animal Husbandry:

The (livestock) calf may be affected by tiredness, hence, the cattle rearers are advised to feed their calf with 30gms of mineral mixture per day.

Also, de-worm your calf on a regular schedule with the support of a nearby veterinarian.

## Kanyakumari

#### AGRO ADVISORIES:

S. N.	CROP	STAGES	ADVISORIES
	There are possibility of rainfall on 15.09.23 and 17.09.23. Maximum temperature will range from 30 - 31°C and minimum temperature will range from 24 - 25°C. Partly cloudy condition may prevail. The morning relative humidity will range from 80 % and it may range from 50 - 60 % during afternoon. Wind speed may be 16 - 18 km / hr in West direction.		
1.	Horticultural crops	All stages	Irrigation should be given to fruit trees, Spices, Vegetables and other horticultural crops.
2.	Clove	All stages	There is very light rainfall for the forthcoming days so irrigate the plant regularly.
3.	Tapioca	Vegetative stage	Mealy bug infestation may occur spraying of fish oil rosin soap @ 25 gram per litre is recommended to control the pest.

4.	Coconut	All stages	For the control of coconut rugose spiraling whitefly kindly avoid application of insecticides to encourage natural enemies and setting up of yellow sticky traps coated with castor oil @ 8/acre.
5.	Banana	Shooting stage	To improve the yield of banana, Spray micronutrients viz., ZnSO <sub>4</sub> (0.5%), FeSO <sub>4</sub> (0.2%), CuSO <sub>4</sub> (0.2%) and H <sub>3</sub> BO <sub>3</sub> (0.1%) at 3rd, 5th and 7th MAP to increase yield and quality of banana.

SMS Advisory

Jasmine : Spray Profenophos 50 EC @ 1 ml/lit to control the bud worm.

## Salem

Weather Advisory Bulletin for livestock, poultry and agro advisory

Livestock, Poultry and Crop	Stage	Weather advisory
Agro advisory from Krishi Vigyan Kendra, Salem:		
Crops	General	Since light rainfall is expected in the forthcoming days, so during insecticide or herbicide spraying use sticking agent.
Bhendi /orkra/ brinjal:	Vegetative stage	To manage red spider mite spray wettable sulphur 80 wg at 40g per acre or propargite 57 ec at 400 ml per acre.
Crops	General	Farmers should do soil testing before sowing or cultivation of any crop. Soil testing report shows availability of nutrients in soil and due to this, it is easy to manage fertilizer dose of any crop, to save fertilizer and to maintain soil fertility also. seed treatment with T. viride @ 4g or P. fluorescens @ 1g/kg or Bacillus subtilis before sowing of crop can control the incidence root rot diseases
Brinjal:	Vegetative stage	Brinjal- Shoot and Fruit borer. Remove the affected terminal shoot showing boreholes and affected fruits and destroy. Install pheromone trap @ 12/ha. Neem seed kernel extract (NSKE) 5 % or Spray any one of the following chemicals starting from one month after planting at 15 days interval Azadirachtin 1.0% EC @ 3.0 ml/lit or Emamectin benzoate 5 % SG @ 4 g/10 lit. or Flubendiamide 20 WDG @ 7.5 g/10 lit.
Goat	General	Don't allow sheep and goat to graze near local water bodies duly this season to avoid internal parasitic infestation. Farmers are advised to not allow the animals graze on fresh pasture.
Cow	Vegetative stage	Prevailing moist climate is conducive for mastitis infection in milch animals. Hence, clean the udder with 1% KMnO <sub>4</sub> before and after milking
Sheep and Goat	General	Breeding management for sheep and goats The breeding season for sheep and goats starts from July to October when the seasonal rainfall starts. Breeding of ewes and does depends on feed and season.

		During this season, the feeding of ewes and does (flushing) increases more number of ewes and does to attain heat and breed so that there will be more number of multiple births in does and uniform size lambs and kids crop.
--	--	--

## Namakkal

### Weather Advisory Bulletin for livestock, poultry and agriculture

Livestock, Poultry & Crop	Stage	Weather advisory
Livestock	Sheep and Goat	<p><b>Agroforestry for small ruminants</b></p> <p>To augment the fodder production for small ruminants, agroforestry system particularly planting of trees may be undertaken during this south west monsoon season. The trees such as Acacia, Albizia, Erythrina, Ficus, Gliricidia, Leucaena, Sesbania, Moringa may be planted at a spacing of 1m x 1 m along the contours in an east-west direction. In general, double rows of fodder tree / shrubs at wider spacing is preferred. It has been found that when 50 per cent of the feeds supplied as tree leaves mixture viz. Albizia lebbeck, Gliricidia sepium, Leucaena leucocephala and Ficus bengalensis leaves as compared to green grass alone, the production performance and nutrient utilization in small ruminants increased. Grasses and legumes such as guinea grass, Cenchrus, stylo, hedge lucerne, horse gram, cow pea may be cultivated between double rows of trees later. Cenchrus ciliaris responds highly to phosphorous application and hence the fertilizer DAP may be applied during this monsoon season. Subdivision of the fodder plot into paddocks and rotational grazing is recommended in case of direct grazing. Grazing periods are generally 1-2 weeks, followed by recuperation periods of 3-6 weeks. At least 30 per cent legume component has to be maintained as mixed pasture for meeting the protein and calcium requirements of grazing animals.</p>
<b>Agro advisory from Krishi Vigyan Kendra, Namakkal :</b>		
Coconut	Growing stage	<p>Coconut rugose spiraling whitefly incidence was noticed all over Namakkal district. It can be managed by spraying Neem oil 5 ml with 1.5 ml sticking agent using power gun sprayer and placing yellow sticky trap of 3 ft X 1.5ft @ 10 numbers / acre.</p> <p>Sooty mould can be controlled by spraying starch solution and allowing chrysoperla insect feeder @ 400 numbers and Encarsia parasitoid @ 100 / acre.</p> <p>Avoid using chemical pesticides.</p>
Paddy	Transplantig period	<p>Paddy growing farmers are requested to apply 5 kg zinc solublizing bacteria and 10 kg zinc sulphate as basal dose. Also, give 5 – 10 days interval between the application of bacteria and zinc sulphate fertilizers. Don't apply both the sources together.</p>
Maize	Vegetative stage	<p>Farmers are advised to spray Emamectin Benzoate (@ 4 gram / 10 litre of water) pesticide spray to control maize fall army worm pest during initial stage of the crop.</p>



Turmeric	Vegetative stage	Farmers are requested to sow moth bean seeds in between the rows of turmeric and incorporate the same in the field within 30 – 45 days after sowing in order to reduce weed growth and build up nitrogen in the soil.
----------	------------------	---

## Dharmapuri

### Weather Advisory Bulletin for livestock, poultry and agriculture

SMS: – very light to light rainfall Provide drainage facilities. Don't leave the harvested produce in open field. Don't allow the animals grazing outside.

Crop	Advisory
Turmeric	Turmeric - Leaf spot- In affected leaves, elliptic or oblong spots with yellow halo are seen. The centre of spots are grayish white and then with numerous black dots in centre As the disease advances, the leaves dry up and give a scorched appearance .for control measures Field sanitation. Spray with Mancozeb 0.25% or copper oxy chloride 0.25% immediately after the appearance of symptom and at 15 days interval.
Turmeric	Turmeric - Rhizome rot n infected plants, basal portion of the shoots appear watery and soft. The root system is very much reduced The leaves exhibit gradual drying along the margin Infected rhizomes soft, rotted, colour changes into different shades of brown for control measures Providing good drainage facilities. Soil drenching with copper oxy chloride (0.25%) in and around affected plants. Soil application of Pseudomonas fluorescens talc formulation (2.5 kg/ha).
Bhendi	Yellowing of the entire network of veins in the leaf blade is the characteristic symptom. In severe infections the younger leaves turn yellow, become reduced in size and the plant is highly stunted.The veins of the leaves will be cleared by the virus and interveinal area becomes completely yellow or white.In a field, most of the plants may be diseased and the infection may start at any stage of plant growth.Infection restricts flowering and fruits, if formed, may be smaller and harder. The affected plants produce fruits with yellow or white colour and they are not fit for marketing.The virus is spread by whitefly for the control measures Spray azadirachtin 0.03 WSP @ 5 g/10l or methyl demeton 25 EC @ 1.6 ml/l or thiamethoxam 25 WG @ 2 g/lit to kill the insect vector, whitefly.
Tomato	Bacterial wilt- High soil moisture. Rapid and complete wilting of plant. Lower leaves drop before wilting. Yellow brown discolouration of tissues. White bacterial ooze from cut ends. Drenching with bleaching powder @ 10 kg / ha.
Jasmine	Jasmine Budworm symptoms of damage Caterpillar makes hole on the flower bud and feeds on the inner content. Larva attacks 2 -3 buds Petals are eaten by the larvae for control measures Collect and destroy the damaged buds with larvae Use light trap to attract and kill the adult moths Spray NSKE 5% or Thiochlorbrid 240 SC @ 1 ml /litre.
Chillies	Chillies trips The infested leaves develop crinkles and curl upwards, Elongated petiole, Buds become brittle and drop down, Early stage, infestation leads to stunted growth and flower production, fruit set are arrested for control measures Inter crop with agathi (Sesbania grandiflora) to provide shade which regulate the thrips population,Do not grow chilli after sorghum, Do not follow chilli and onion mixed crop, Sprinkle water over the seedlings to check the multiplication of thrips Fipronil 5 % SC @1.5 ml/lit or Spinosad 45 % SC @ 3.2 ml/10 lit.. Apply or Spray any one of the following insecticide.
Sugarcane	Sugarcane White Grub symptoms Yellowing and wilting of leaves. Drying of entire crown. Affected canes come off easily when pulled. Cause extensive damage to roots and base of shoot. Affected canes shows lodging in the field. Damages can seen more in ratoon crop when compare

	to plant crop for control measures Apply Beauveria brongniortii @ 2.5 kg/ha (1*10 <sup>9</sup> CFU/g) entopathogenic fungal formulation along with FYM at the time of planting in endemic regions..
Coconut	Coconut -Leaf Eating Caterpillar/ Black Headed Caterpillar- The coconut trees of all ages are attacked. Dried up patches on leaflets of the lower leaves, only three or four youngest leaves at the center of the grown remain green. Galleries of silk and frass on underside of leaflets. In case of severe infestation the whole plantations present a scorched appearance for control measures Removal of highly infested lower fronts and burning, Release of Braconid parasitoid &.Keeping light trap at 6.30 pm to 7.30 to attract and kill adult moths.
Goat and Sheep	In Livestock (Sheep and goat) - To increase the body weight it is recommended to give TANUVAS mineral salt mixture daily 5gm supplement with concentrated feed.
Goat and Sheep	Enterotoxaemia: A Bacterial disease causing severe illness and mortality in all ages of sheep. Occurrence is more common after rainy season. Clinical Signs: Young lambs die suddenly without any symptoms. Severe stomach pain, Diarrhoea, difficulty in breathing, convulsions before death may be observed in some animals. Prevention: Young animals should be vaccinated at 6 weeks of age and revaccination should be done every year prior to rainy season. Restrict the animals to young succulent grass pasture immediately after rainy season. Avoid sudden change in the feed.
Cow	Mastitis in high yielding cows: Mastitis in a very common problem in high yielding cows caused mainly by bacterias in unhygienic farm conditions. Ethnoveterinary medicine for Mastitis: 1. Aloe vera -250g. 2. Turmeric- 50g. (rhizome (or) powder. 3. Calcium hydroxide. (Lime-15g). Preparation: 1. Blend ingredients to form a reddish paste. Application: 1. Make a handful of paste by adding 150-200ml of water. 2. Wash and clean the udder and apply the mixture throughout. 3. Repeat the application 10 times a day for 5 days. 4. Feed 2 lemons twice daily for 3 days.

## Krishnagiri

### Weather Advisory Bulletin for livestock, poultry and agriculture

Livestock, Poultry & Crop	Stage	Weather advisory
Livestock	Sheep and Goat	<p>Agroforestry for small ruminants</p> <p>To augment the fodder production for small ruminants, agroforestry system particularly planting of trees may be undertaken during this south west monsoon season. The trees such as Acacia, Albizia, Erythrina, Ficus, Gliricidia, Leucaena, Sesbania, Moringa may be planted at a spacing of 1m x 1 m along the contours in an east-west direction. In general, double rows of fodder tree / shrubs at wider spacing is preferred. It has been found that when 50 per cent of the feeds supplied as tree leaves mixture viz. Albizia lebbeck, Gliricidia sepium, Leucaena leucocephala and Ficus bengalensis leaves as compared to green grass alone, the production performance and nutrient utilization in small ruminants increased. Grasses and legumes such as guinea grass, Cenchrus, stylo, hedge lucerne, horse gram, cow pea may be cultivated between double rows of trees later. Cenchrus ciliaris responds highly to phosphorous application and hence the fertilizer DAP may be applied during this monsoon season. Subdivision of the fodder plot into</p>

		paddocks and rotational grazing is recommended in case of direct grazing. Grazing periods are generally 1-2 weeks, followed by recuperation periods of 3-6 weeks. At least 30 per cent legume component has to be maintained as mixed pasture for meeting the protein and calcium requirements of grazing animals.
Agro advisory from Krishi Vigyan Kendra		
Coconut	Growing stage	Rugose spiraling whitefly incidence was noticed in coconut crop. It can be managed by spraying Neem oil 5 ml with 1.5 ml sticking agent using power gun sprayer and placing yellow sticky trap of 3 ft X 1.5ft @ 10 numbers / acre. Sooty mould can be controlled by spraying starch solution and allowing chrysoperla insect feeder @ 400 numbers and Encarsia parasitoid @ 100 / acre. Avoid using chemical pesticides.
Paddy	Transplantig period	Paddy growing farmers are requested to apply 5 kg zinc solublizing bacteria and 10 kg zinc sulphate as basal dose. Also, give 5 – 10 days interval between the application of bacteria and zinc sulphate fertilizers. Don't apply both the sources together.
Maize	Vegetative stage	Farmers are advised to spray Emamectin Benzoate (@ 4 gram / 10 litre of water) pesticide spray to control maize fall army worm pest during initial stage of the crop.
Turmeric	Vegetative stage	Farmers are requested to sow moth bean seeds in between the rows of turmeric and incorporate the same in the field within 30 – 45 days after sowing in order to reduce weed growth and build up nitrogen in the soil.

## Karaikal

### Agro Advisory





Crop/livestock	Stage/Particulars	Agro Advisory
Rice (Samba)	Field preparation	For direct seeded rice, apply 50 kg of P2O5/ha as basally in the last plough and level the field to have uniform crop stand and provide shallow trenches (15 cm width) at an interval of 3 m all along the field to facilitate the draining of excess water in case of heavy rainfall at the early growth stage of rice.
	Sowing	Long duration rice varieties like CR 1009, CR 1009 Sub 1, ADT 50 and KCLR 1 may be adopted for ensuing Samba season.
		For direct seeded rice, sowing may be done upto 30th September.
	Weed management	To manage weeds in nursery, apply pre-emergence herbicide Butachlor 50 EC @ 1.0 kg (a.i.)/ha on 8 DAS.
To manage weeds in direct wet seeded rice, apply Pretilachlor + safener 30 EC @ 0.450 kg (a.i.)/ha at 3 days after sowing.		
To manage weeds in direct dry seeded rice, apply Pendimethalin 30 EC @ 1.0 kg (a.i.)/ha at 5 days after sowing.		
Cattle	Vaccination	Before the onset of monsoon, animals may be vaccinated for Foot and Mouth Disease and Hemorrhagic Septicemia. Grazing animals that are drinking pond water should be dewormed


	Deworming	Grazing animals that are drinking pond water should be dewormed.
	Shed management	Repair cattle/goat/poultry shed before the rainy season and ensure the roof leak proof. Otherwise leaking of rain water in dirty sheds may increase in ammonia production and coccidiosis disease.
		Do patchwork to fill the cracks in the floor to prevent hoof rotting disease of goats.
Paddy straw enriching	Urea enriched paddy straw can be prepared and used for cattle (To enrich 100 kg of paddy straw, dissolve 4 kg urea in 65 litres of water and sprinkle prepared urea solution over the paddy straw and cover it. After 21 days the urea treated paddy straw can be used for feeding).	

SMS: Postpone irrigation as light rain is expected for the next five days.

## Puducherry

Weather based Agro-Advisories:

Crop	Stage/ Particulars	Agro Advisory
Rice	Nursery stage	Anticipating rainfall, samba season nursery may be prepared for sowing medium duration rice.
Rice stem borer 	Tillering stage	To manage rice stem borer, release parasitoid <i>Trichogramma japonicum</i> 3 tricho cards/ha at active tillering stage (37, 44 and 51 DAP) or Azadirachtin 0.03% @ 4 ml/l or cartaphydrochloride 50% SP @ 2g/l or flubendiamide 20 WG @ 0.25 g/l or thiamethoxam 25 WG @ 0.2 g/l.
Rice BLB 	Tillering stage	Prevailing weather condition is favorable for bacterial leaf blight infection in rice crop. White colour streaks appear in leaf and it turns brown in colour and dry. To control spray copper hydroxychloride @ 300 g/ac.
Coconut Rhinoceros beetle 	Reproductive Stage	To Control Rhinoceros beetle in coconut, Set up Rhino lure pheromone trap @ 5 traps/ha to trap and kill the beetles. Soak castor cake at 1 kg in 5 liter of water in small mud pots and keep them in the coconut gardens to attract and kill the adults. Apply a mixture of neem seed powder + sand (1:2) @150 g per palm in the base of the 3 inner most leaves in the crown.
Mango 		Mango trees should be pruned once in three years in August and September. In the tree, low branches, cross, overlapping branches, diseased and thin, dead or dry branches should be removed. This allows sunlight and air to reach the inner branches, allowing the tree to grow well and flower and bear fruit. A mango tree should not miss flowering for up to three years. Once a year in August and September, close branches should be cut and only healthy branches should be left. Fungicide (Bordeaux mixture) should be applied like paste. Otherwise, fungus can enter through the cut and cause disease.

<p>Mastitis in high yielding cows</p> 	<p>Mastitis is a very common problem in high yielding cows caused mainly by bacteria in unhygienic farm conditions.</p> <p>Ethno veterinary medicine for Mastitis: 1. Aloe vera -250g. 2. Turmeric-50g. (rhizome (or) powder. 3. Calcium hydroxide. (Lime-15g).</p> <p>Preparation: Blend ingredients to form a reddish paste. Application: 1. Make a handful of paste by adding 150-200ml of water. 2. Wash and clean the udder and apply the mixture throughout. 3. Repeat the application 10 times a day for 5 days. 4. Feed 2 lemons twice daily for 3 days.</p>
---	--

SMS: To know the weather forecast and agro advisory bulletins, download MEGHDOOT app and use it wisely.

## Puducherry Block level

### Ariankuppam, Ozhukarai and Villianur Blocks

Light to Moderate rain with thunderstorms & lightning is likely to occur in one or two places from 13.09.2023 and 17.09.2023. To know the weather forecast and agro advisory bulletins, download MEGHDOOT app and use it wisely.

Crop(Varieties)	Crop Specific Advisory
RICE	Anticipating rainfall, samba season nursery may be prepared for sowing medium duration rice.
Horticulture(Varieties)	Horticulture Specific Advisory
COCONUT	<ul style="list-style-type: none"> <li>□ To Control Rhinoceros beetle in coconut, Set up Rhino lure pheromone trap @ 5 traps/ha to trap and kill the beetles.</li> <li>□ Soak castor cake at 1 kg in 5 liter of water in small mud pots and keep them in the coconut gardens to attract and kill the adults.</li> <li>□ Apply a mixture of neem seed powder + sand (1:2) @150 g per palm in the base of the 3 inner most leaves in the crown.</li> </ul>
Live Stock(Varieties)	Live Stock Specific Advisory
COW	<p>Mastitis is a very common problem in high yielding cows caused mainly by bacteria in unhygienic farm conditions. Ethno veterinary medicine for Mastitis: 1. Aloe vera -250g. 2. Turmeric- 50g. (rhizome (or) powder. 3. Calcium hydroxide. (Lime-15g).</p> <p>Preparation: Blend ingredients to form a reddish paste. Application: 1. Make a handful of paste by adding 150-200ml of water. 2. Wash and clean the udder and apply the mixture throughout. 3. Repeat the application 10 times a day for 5 days. 4. Feed 2 lemons twice daily for 3 days.</p>

## Bahour, Mannadipet and Nettapakkam Blocks

Light to Moderate rain with thunderstorms & lightning is likely to occur in one or two places from 13.09.2023 and 17.09.2023. To know the weather forecast and agro advisory bulletins, download MEGHDOOT app and use it wisely.

Crop(Varieties)	Crop Specific Advisory
RICE	To manage rice stem borer, release parasitoid <i>Trichogramma japonicum</i> 3 tricho cards/ha at active tillering stage (37, 44 and 51 DAP) or Azadirachtin 0.03% @ 4 ml/l or cartaphydrochloride 50% SP @ 2g/l or flubendiamide 20 WG @ 0.25 g/l or thiamethoxam 25 WG @ 0.2 g/l.
RICE	Prevailing weather condition is favorable for bacterial leaf blight infection in rice crop. White colour streaks appear in leaf and it turns brown in colour and dry. To control spray copper hydroxychloride @ 300 g/ac.
Horticulture(Varieties)	Horticulture Specific Advisory
MANGO	Mango trees should be pruned once in three years in August and September. In the tree, low branches, cross, overlapping branches, diseased and thin, dead or dry branches should be removed. This allows sunlight and air to reach the inner branches, allowing the tree to grow well and flower and bear fruit. A mango tree should not miss flowering for up to three years. Once a year in August and September, close branches should be cut and only healthy branches should be left. Fungicide (Bordeaux mixture) should be applied like paste. Otherwise, fungus can enter through the cut and cause disease.
Live Stock(Varieties)	Live Stock Specific Advisory
COW	Mastitis is a very common problem in high yielding cows caused mainly by bacteria in unhygienic farm conditions. Ethno veterinary medicine for Mastitis: 1. Aloe vera -250g. 2. Turmeric- 50g. (rhizome (or) powder. 3. Calcium hydroxide. (Lime-15g). Preparation: Blend ingredients to form a reddish paste. Application: 1. Make a handful of paste by adding 150-200ml of water. 2. Wash and clean the udder and apply the mixture throughout. 3. Repeat the application 10 times a day for 5 days. 4. Feed 2 lemons twice daily for 3 days.

