



तमिलनाडु के लिए राज्य स्तरीय समग्र कृषि-मौसम परामर्श बुलेटिन



State Composite Agro-meteorological Advisory Bulletin for Tamil Nadu and Puducherry Bulletin No. 101/2024

For the period 0830 IST, 17th December 2024 to
0830 IST, 22th December 2024

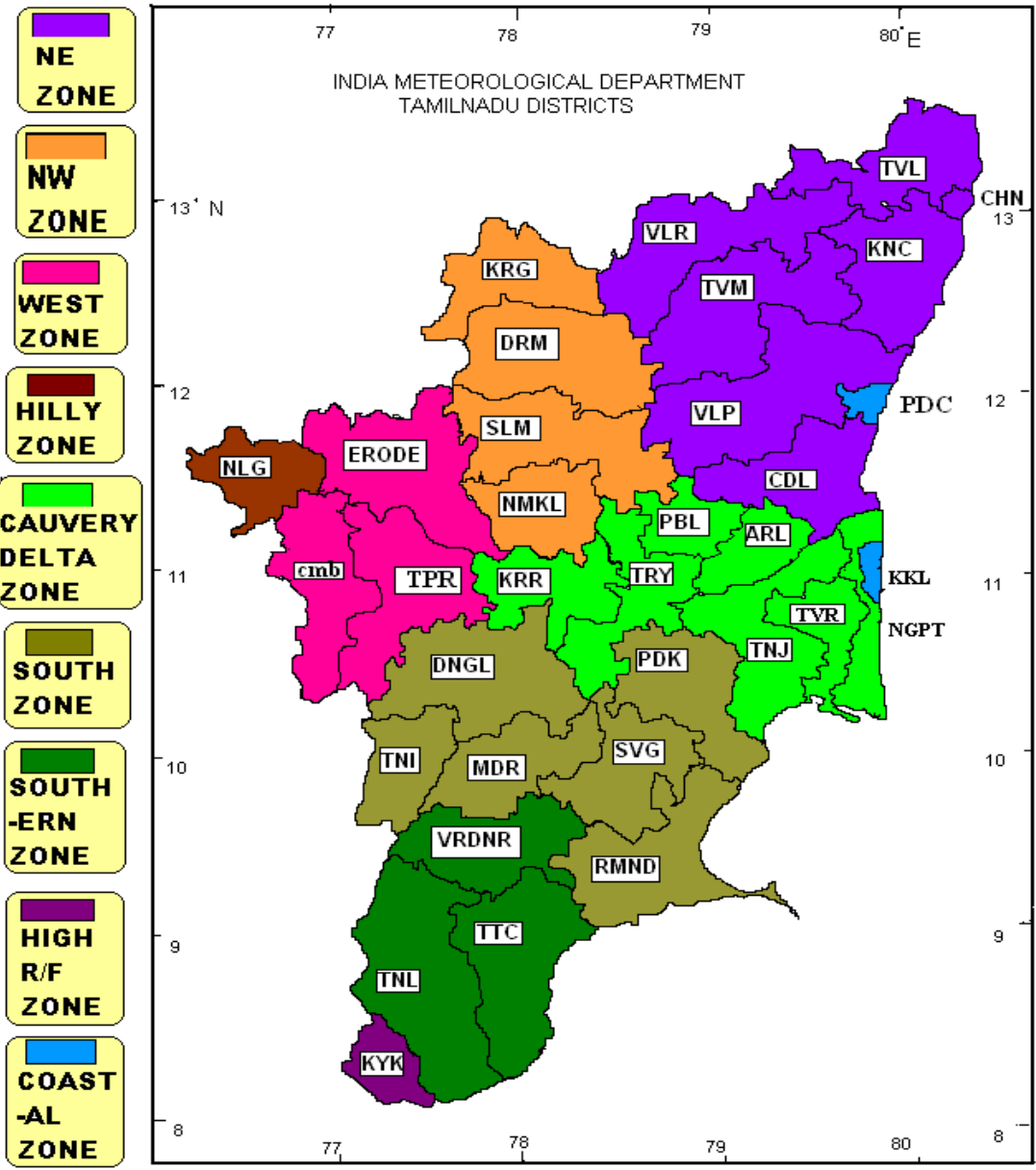
Issued on Tuesday, 17th December 2024

Issued by

DDGM, Regional Meteorological Centre, India Meteorological Department,
Chennai in collaboration with TNAU and nine AMFU's of Agro climatic Zones of
the Tamil Nadu state

Agro climatic zones of the state

Sl. No	Agro climatic zone	Districts	Agro met field Unit (AMFU) location
1	Northeastern zone	Kanchipuram, Tiruvallur, Cuddalore Tiruvannamalai, Chennai, Villupuram , Vellore	Chennai
2	Northwestern zone	Dharmapuri, Krishnagiri, Salem and Namakkal	Namakkal
3	Western Zone	Erode, Tiruppur and Coimbatore,	Coimbatore,
4	Cauvery Delta zone	Thanjavur, Nagapattinam, Tiruvarur, Karur, Perambalur, Ariyalur and Tiruchirapalli.	Adudurai
5	Southern zone	Virudhunagar, Tirunelveli and Thoothukudi	Kovilpatti
6	South Zone	Pudukkottai, Madurai, Dindigul, Theni, Ramanathapuram and Sivagangai	Kannivadi
7	High rainfall zone	Kanyakumari	Pechiparai
8	Hilly zone	Nilgiris	Ooty
9	Coastal Zone	Karaikal and Pondicherry	Karaikal



Past Weather Summary for the period 13.12.24 to 16.12.24 for the State of Tamilnadu & Puducherry

Temperature:

Maximum Temperature of range 23°C – 32°C prevailed over the state. Kodaikanal and Uthagamandalam recorded Maximum temperature range 17°C – 25°C during the period.

Minimum temperature of range 14°C - 23°C prevailed over the State. Kodaikanal and Uthagamandalam recorded Minimum temperature of range 07°C - 13°C during the same period.

Spatial distribution of Rainfall

Spatial distribution of Rainfall	Tamil Nadu	Puducherry
Widespread (Most places)	13.12.2024, 14.12.2024 and 15.12.2024	13.12.2024 and 14.12.2024
Fairly widespread (Many places)		
Scattered (Few Places)		
Isolated (One or Two Places)	16.12.2024	-
Dry		15.12.2024 and 16.12.2024

Chief Amounts of Rainfall (in cms):-

13.12.24: Oothu (dist Tirunelveli) 54,Ambasamudram (dist Tirunelveli), Kovilpatti (dist Thoothukudi) 37 each,Kannadaian Anicut (dist Tirunelveli), Kakkachi (dist Tirunelveli) 35 each,Manjolai (dist Tirunelveli) 32,Ayikudi (dist Tenkasi), Nalumukku (dist Tirunelveli), Lalpet (dist Cuddalore) 31 each,Manimutharu (dist Tirunelveli) 30,Palayamkottai (dist Tirunelveli), Manalmedu ARG (dist Mayiladuthurai) 26 each,Srimushnam (dist Cuddalore), Shencottah (dist Tenkasi), Ramanadhi Dam Section (distTenkasi), K.M.Koil (dist Cuddalore), Servalar Dam (dist Tirunelveli) 24 each,Thenkasi (dist Tenkasi), Cheranmahadevi (dist Tirunelveli) 23 each,Mayiladuthurai (dist Mayiladuthurai), Papanasam (dist Tirunelveli), Kilacheruvai (distCuddalore) 22 each,Avadi (dist Tiruvallur), Pelandurai (dist Cuddalore), Sethiathope (dist Cuddalore), GundarDam (dist Tenkasi), Thiruvaidaimaruthur (dist Thanjavur), Tirunelveli AWS (dist Tirunelveli),Jayamkondam (dist Ariyalur) 21 each,Aduthurai AWS (dist Thanjavur), Karaikal (dist Karaikal), Sendurai (dist

Ariyalur), Manjalaru(dist Thanjavur) 20 each,Mayiladuthurai AWS (dist Mayiladuthurai), Budalur (dist Thanjavur), Vilathikulam (distThoothukudi), Kumbakonam (dist Thanjavur) 19 each,Sembanarkoil PWD (dist Mayiladuthurai), Tirukattupalli (dist Thanjavur), Ariyalur TalukOffice (dist Ariyalur), Karaikal AWS (dist Karaikal), Ariyalur PTO (dist Ariyalur), KaraikalAWS (dist Karaikal), Me Mathur (dist Cuddalore), Ariyalur AWS (dist Ariyalur), Lakkur (distCuddalore) 18 each,Tozhudur (dist Cuddalore), Ettayapuram (dist Thoothukudi), Kallakurichi (dist Kallakurichi),Tiruttani (dist Tiruvallur), Kamudhi (dist Ramanathapuram), Bhuvanagiri (dist Cuddalore),Vaippar (dist Thoothukudi), Kalugumalai (dist Thoothukudi), Lower Anaicut (dist Thanjavur),Sriperumbudur (dist Kancheepuram), Eraiyur (dist Perambalur), Kattumayilur (distCuddalore), Manalmedu (dist Mayiladuthurai) 17 each,Suthamalli Dam (dist Ariyalur), Vepur (dist Cuddalore), Kadambur (dist Thoothukudi) 16each,Kalakadu (dist Tirunelveli), Kovilpatti AWS (dist Thoothukudi), Thanjai Papanasam (distThanjavur), Sankarankoil (dist Tenkasi), Old Taluk Office Srivaikuntam (dist Thoothukudi),Ayyampettai (dist Thanjavur) 15 each,Karuppanadhi Dam (dist Tenkasi), Ranipet AWS (dist Ranipet), Avudayarkoil (distPudukkottai), Koratur (dist Tiruvallur), Poonamallee (dist Tiruvallur), Chembarabakkam_REV(dist Tiruvallur), Arakonam (dist Ranipet), Panapakkam (dist Ranipet), Virudachalam (distCuddalore), Vembakottai (dist Virudhunagar), Agaram Seegoor (dist Perambalur),Labbaikudikadu (dist Perambalur), Kundrathur (dist Kancheepuram), Thirumoorthy IB (distTiruppur), Sivagiri (dist Tenkasi), Kuppanatham (dist Cuddalore), Adavinainnarkoil Dam (distTenkasi) 14 each,Manamelkudi (dist Pudukkottai), Thirumoorthi Dam (dist Tiruppur), Tarangambadi (distMayiladuthurai), Kuruvadi (dist Ariyalur), Tirunelveli (dist Tirunelveli), Thiruvalangadu (distTiruvallur), Kodaikannal Boat Club (dist Dindigul), Sattur (dist Virudhunagar), Oddanchatram(dist Dindigul), Kaveripakkam (dist Ranipet), Veppanthattai (dist Perambalur), Surangudi(dist Thoothukudi), DSCL Virugavoor (dist Kallakurichi), Tiruvallur (dist Tiruvallur) 13 each,Sivakasi (dist Virudhunagar), Virdhachalam KVK AWS (dist Cuddalore), Maduranthagam(dist Chengalpattu), Palani ARG (dist Dindigul), Kamudhi ARG (dist Ramanathapuram),Thaluthalai (dist Perambalur), Kadalkudi (dist Thoothukudi), Arcot (dist Ranipet), PoonamalleARG (dist Tiruvallur), Chidambaram (dist Cuddalore), Nannilam (dist Thiruvarur) 12 each,Valinokam (dist Ramanathapuram), Paramakudi (dist Ramanathapuram), Thirumanur (distAriyalur), Kayathar (dist Thoothukudi), Andimadam Taluk Office (dist Ariyalur), Krishnapuram(dist Perambalur), Uthiramerur (dist Kancheepuram), Nanguneri (dist Tirunelveli),Amaravathy Dam (dist Tiruppur), Kadaladi (dist Ramanathapuram), Thekkadi (dist Theni),Chetpet (dist Tiruvannamalai), Zone 12 Meenambakkam (dist

Chennai), Tirupuvanam (distSivagangai), Alandur (dist Chennai), Chennai (AP) (dist Chennai), DSCL Sulangurichi (distKallakurichi), Kayalpattinam (dist Thoothukudi) 11 each,DSCL Rishivandhiyam (dist Kallakurichi), Vilupuram (dist Villupuram), Meenambakkam AWS(dist Chennai), Ranipet (dist Ranipet), Periyar (dist Theni), Ulundurpet (dist Kallakurichi),DSCL Eraiyur (dist Kallakurichi), Parangipettai (dist Cuddalore), Dindigul (dist Dindigul),Chengalpattu (dist Chengalpattu), Zone 11 Maduravoyal (dist Chennai), Kancheepuram (distKancheepuram), DSCL Thiyagadurgam (dist Kallakurichi), DSCL Kalayanallur (distKallakurichi), Tiruttani AWS (dist Tiruvallur), Wallajah (dist Ranipet), Thuvakudi AWS (distThiruchirappalli), Sirkali (dist Mayiladuthurai), Tiruttani PTO (dist Tiruvallur), Grand Anaicut(dist Thanjavur), Palani (dist Dindigul), Tirupathur (dist Sivagangai), Kodaikanal (distDindigul), Ambathur Rev (dist Chennai), Vedasandur AWS (dist Dindigul) 10 each,Zone 07 Ayapakkam (dist Chennai), V.Kalathur (dist Perambalur), Pullambadi (distThiruchirappalli), Poondi (dist Tiruvallur), Perambalur (dist Perambalur), ChembarambakkamARG (dist Tiruvallur), Tiruvaiyaru (dist Thanjavur), Mudukulatur (dist Ramanathapuram),Pallipattu (dist Tiruvallur), Nagapattinam (dist Nagapattinam), Gingee (dist Villupuram),Gadana Dam (dist Tenkasi), LMOIS Kolapakkam ARG (dist Chengalpattu), Uthukottai (distTiruvallur), Aruppukottai (dist Virudhunagar), DSCL Keelpadi (dist Kallakurichi),Pilavakkal_Periyar Dam (dist Virudhunagar), Zone 11 Valasaravakkam (dist Chennai),Ottapadiram (dist Thoothukudi), Panruti (dist Cuddalore), Thanjavur PTO (dist Thanjavur),Madathukulam (dist Tiruppur), ACS Medical College ARG (dist Kancheepuram), SCS MillPillaiarkuppam (dist Kallakurichi), Valangaiman (dist Thiruvarur), Kurungulam (distThanjavur), Gomugi Dam PWD (dist Kallakurichi), Vadakuthu (dist Cuddalore),Thammampatty (dist Salem), Palar Anicut (dist Ranipet), Anna University ARG (distChennai), Nandhiyar Head (dist Thiruchirappalli), Zone 12 Alandhur (dist Chennai), MGRNagar (dist Chennai), Anna University (dist Chennai), RSCL-3 Avalurpettai (dist Villupuram),Azhiyar (dist Coimbatore), Veeraganoor (dist Salem), Singampunari (dist Sivagangai), JayaEngg College AWS (dist Tiruvallur), Zone 6 Perambur (dist Chennai) 9 each,Kollidam (dist Mayiladuthurai), Samayapuram (dist Thiruchirappalli), Moolaikaraipatti (distTirunelveli), DSCL Thirupalapandal (dist Kallakurichi), R.K.Pet (dist Tiruvallur), TobaccoStation (VDR) (dist Dindigul), Vedasandur (dist Dindigul), Tiruchirappalli Airport (distThiruchirappalli), Tiruvarur (dist Thiruvarur), Kovilankulam (dist Virudhunagar), AyanavaramTaluk Office (dist Chennai), Sholinganallur (dist Chennai), Gummidipoondi (dist Tiruvallur),Satyabama Uty ARG (dist Chengalpattu), Zone 15 Uthandi (dist Chennai), Panjapatti (distKarur), Aruppukottai KVK AWS (dist Virudhunagar), Sethu Bhaskar Agri College AWS

(distSivagangai), Tiruvannamalai AWS (dist Tiruvannamalai), Karaikudi (dist Sivagangai),Thanjavur (dist Thanjavur), Chinnakalar (dist Coimbatore), Tuticorin Rly Station ARG (distThoothukudi), Kamatchipuram (dist Dindigul), Ponnaniyar Dam (dist Thiruchirappalli),Perambalur AWS (dist Perambalur), Kalavai PWD (dist Ranipet), Vandavasi (distTiruvannamalai), Maniyachi (dist Thoothukudi), Thiruchuzhi (dist Virudhunagar),Manimutharu Dam PWD (dist Kallakurichi) 8 each,Gangavalli (dist Salem), Chettikulam (dist Perambalur), Tiruvarur AWS (dist Thiruvarur),Keelpennathur (dist Tiruvannamalai), Tiruvannamalai (dist Tiruvannamalai), Tuticorin (distThoothukudi), Sivagangai PWD TB (dist Sivagangai), Ponnai Dam (dist Vellore), Zone 12D156 Mugalivakkam (dist Chennai), Manamadurai (dist Sivagangai), RSCL-3 Valathy (distVillupuram), Kodumudiyaru Dam (dist Tirunelveli), Kodavasal (dist Thiruvarur), Ammoor(Walajah Railway) (dist Ranipet), Needamangalam (dist Thiruvarur), BASL Manalurpet (distKallakurichi), DSCL Madampoondi (dist Kallakurichi), Taramani ARG (dist Chennai), PuthuVettakudi (dist Perambalur), Thogamalai (dist Karur), Aravakurichi (dist Karur), KadavurTaluk Offie AWS (dist Karur), Pulipatti (dist Madurai), Thirukalukundram (dist Chengalpattu),Kallakurichi ARG (dist Kallakurichi), Tiruvadana (dist Ramanathapuram), Srivilliputhur (distVirudhunagar), Tindivanam (dist Villupuram), Mahabalipuram (dist Chengalpattu), Ammundi(dist Vellore), Zone 07 Ambattur (dist Chennai), Zone 14 Madipakkam (dist Chennai), SCSMill Arasoor (dist Villupuram), Pambar Dam (dist Krishnagiri), Kalasapakkam (distTiruvannamalai), Attur (dist Salem), Sirugamani KVK AWS (dist Thiruchirappalli), Mimisal(dist Pudukkottai), Chengam (dist Tiruvannamalai), Zone 15 Sholinganallur (dist Chennai),YMCA Nandnam ARG (dist Chennai), Ramanathapuram (dist Ramanathapuram), Nagudi(dist Pudukkottai), SCS Mill Thiruvannainal (dist Villupuram), Echanviduthi (dist Thanjavur),Manapparai (dist Thiruchirappalli), Zone 13 Adyar (dist Chennai), Tiruchirappalli Junction(dist Thiruchirappalli), Annamalai Nagar (dist Cuddalore), Marakkanam (dist Villupuram),Rajapalayam (dist Virudhunagar), Patthukannu (dist Puducherry), Satankulam (distThoothukudi) 7 each,Kilanilai (dist Pudukkottai), Katpadi (dist Vellore), TNAU CRI Yethapur (dist Salem),Udumalpet (dist Tiruppur), Viralimalai (dist Pudukkottai), Zone 06 Kolathur (dist Chennai),Tallakulam (dist Madurai), Zone 10 Vadapalani (dist Chennai), Orthanad (dist Thanjavur),Vathalai Anaicut (dist Thiruchirappalli), Tuticorin Airport ARG (dist Thoothukudi), RSCL-3Semmedu (dist Villupuram), VIT_Chennai AWS (dist Chengalpattu), Mangalapuram (distNamakkal), Tiruchirappalli Town (dist Thiruchirappalli), Arani (dist Tiruvannamalai),Virudunagar AWS (dist Virudhunagar), Theerthandathanam (dist Ramanathapuram),Devimangalam (dist Thiruchirappalli), Sirukudi (dist

Thiruchirappalli), Kallakudi (distThiruchirappalli), Sankarapuram (dist Kallakurichi), Sattankulam ARG (dist Thoothukudi),Pattukottai (dist Thanjavur), Usilampatti (dist Madurai), Vanamadevi (dist Cuddalore),Thamaraipakkam (dist Tiruvallur), Kurinjipadi (dist Cuddalore), Thuvakudi IMTI (distThiruchirappalli), Musiri (dist Thiruchirappalli), Minnal (dist Ranipet), Anaimaduvu Dam (distSalem), Vembakkam (dist Tiruvannamalai), KCS Mill-2 Moorarpalayam (dist Kallakurichi),Pandavaiyar Head (dist Thiruvarur), Anaippalayam (dist Karur), Ayinkudi (dist Pudukkottai),Puducherry Town (dist Puducherry), Ariyalur Camp Area (dist Kallakurichi), Valparai PAP(dist Coimbatore), Arantangi (dist Pudukkottai), Sivaganga (dist Sivagangai), Vazhapadi (distSalem), Mulanur (dist Tiruppur), Kothavacherry (dist Cuddalore), Watrap (distVirudhunagar), Madurai North (dist Madurai), Madurai city (dist Madurai) 6 each,RSCL Vallam (dist Villupuram), Kariyakovil Dam (dist Salem), K.Paramathi (dist Karur),RSCL-3 Anandhapuram (dist Villupuram), Cuddalore Collector Office (dist Cuddalore),Periyakulam (dist Theni), Sholavandan (dist Madurai), Valparai Taluk Office (distCoimbatore), Pechiparai (dist Kanyakumari), Peravurani (dist Thanjavur), Peraiyur (distMadurai), Kariyapatti (dist Virudhunagar), Sathiar (dist Madurai), BASL Vengur (distKallakurichi), Nambiyar Dam (dist Tirunelveli), Devakottai (dist Sivagangai),Hindustan_University (dist Chengalpattu), Thenparanadu (dist Thiruchirappalli), Cuddalore(dist Cuddalore), Zone 08 Anna Nagar West (dist Chennai), Vedanatham (dist Thoothukudi),Shanmuganadhi (dist Theni), Vamban KVK AWS (dist Pudukkottai), Mannargudi (distThiruvarur), Lalgudi (dist Thiruchirappalli), Zone 09 Nungambakkam (dist Chennai),Keeranur (dist Pudukkottai), Puducherry AWS (dist Puducherry), Kallandri (dist Madurai),Nctpl Marg ECR AWS (dist Chengalpattu), Dharapuram (dist Tiruppur), R.S.Mangalam (distRamanathapuram), RSCL-2 Valavanur (dist Villupuram), Red Hills (dist Tiruvallur),Adiramapattinam (dist Thanjavur), Walajabad (dist Kancheepuram), Idayapatti (distMadurai), Tambaram (dist Chengalpattu), Illuppur (dist Pudukkottai), Uthangarai (distKrishnagiri), Perambur (dist Chennai), Virudhunagar (dist Virudhunagar), Uppar Dam (distTiruppur), Adanakkotai (dist Pudukkottai), Vettikadu (dist Thanjavur), Chennai(N) AWS (distChennai), Cheyyar (dist Tiruvannamalai), Puducherry (dist Puducherry), RSCL-2 Nemoor(dist Villupuram), KCS Mill-1 Moongilthuraipattu (dist Kallakurichi), Melur (dist Madurai),Neivasal Thenpathi (dist Thanjavur), Zone 18 Aminjekarai (dist Chennai), Periyakulam PTO(dist Theni), Tirumayam (dist Pudukkottai), T.Palur (dist Ariyalur), RSCL-2 Koliyanur (distVillupuram), Cheyyur (dist Chengalpattu), Natham AWS (dist Dindigul), Chennai (N) (distChennai), KCS Mill-1 Ariyalur (dist Kallakurichi), Gandarvakottai (dist Pudukkottai),Thaniamangalam (dist Madurai), Vadipatti (dist Madurai), Thuraiyur (dist Thiruchirappalli),BASL Mugaiyur (dist

Villupuram), Zone 05 Basin bridge (dist Chennai), Kelambakkam (distChengalpattu), Pallamorkulam (dist Ramanathapuram) 5 each,Zone 13 Velachery (dist Chennai), Vattanam (dist Ramanathapuram), Polur (distTiruvannamalai), Pudukottai (dist Pudukkottai), Harur (dist Dharmapuri), Thirupporur (distChengalpattu), Mayanoor (dist Karur), Jamunamarathur (dist Tiruvannamalai), ChennaiCollector Office (dist Chennai), Keelaarasadi (dist Thoothukudi), Yercaud (dist Salem),Andipatti (dist Theni), Illayangudi (dist Sivagangai), RSCL-2 Kedar (dist Villupuram),Elumalai (dist Madurai), Tiruchendur (dist Thoothukudi), Vellore (dist Vellore), Perungalur(dist Pudukkottai), Malaiyur (dist Pudukkottai), Cincona (dist Coimbatore), Mettupatti (distMadurai), Vazhapadi ARG (dist Salem), SRC Kudithangi (dist Cuddalore), Thandampettai(dist Tiruvannamalai), Vaigai Dam (dist Theni), Zone 04 Tondiarpet (dist Chennai), Nedungal(dist Krishnagiri), Udayalipatti (dist Pudukkottai), Ramnadu KVK AWS (distRamanathapuram), Vattamalai Resorvoir (dist Tiruppur), Cheyyar ARG (distTiruvannamalai), KCS Mill-2 Kachirayaopalayam (dist Kallakurichi), Periyapatti (distMadurai), Andipatti (dist Madurai), Upasi TRF AWS (dist The Nilgiris), Vanur (distVillupuram), Pappireddipatti (dist Dharmapuri), Vedaranyam (dist Nagapattinam), KCS Mill-1Kadavanur (dist Kallakurichi), Kuppanampatti (dist Madurai), Tirukoilur (dist Kallakurichi),Sholingur (dist Ranipet), Valparai PTO (dist Coimbatore), Zone 05 Chennai central (distChennai), Tirumangalam (dist Madurai), Chittampatti (dist Madurai), CD Hospital Tondiarpet(dist Chennai), Annavasal (dist Pudukkottai) 4 each,Mylam AWS (dist Villupuram), Kovilpatty (dist Thiruchirappalli), Krishnarayapuram (distKarur), Muthupet (dist Thiruvarur), NIOT_Pallikaranai ARG (dist Chennai), NavalurKottapattu (dist Thiruchirappalli), Vellakoil (dist Tiruppur), Bahour (dist Puducherry),Mahabalipuram AWS (dist Chengalpattu), Alangudi (dist Pudukkottai), Vallam (distThanjavur), Cholavaram (dist Tiruvallur), Kudimiyamalai (dist Pudukkottai), Tirupattur (distTirupathur), Mohanur (dist Namakkal), Natham (dist Dindigul), Chidambaram AWS (distCuddalore), Thangachimadam (dist Ramanathapuram), Karur (dist Karur), Gudalur (distTheni), DGP Office (dist Chennai), Zone 09 Ice House (dist Chennai), PWD Vaarappatti(dist Coimbatore), Kil Kotagiri Estate (dist The Nilgiris), Radhapuram (dist Tirunelveli), Zone03 Madhavaram (dist Chennai), Zone 01 Kathivakkam (dist Chennai), Penucondapuram(dist Krishnagiri), BASL Manampoondi (dist Villupuram), Kadavur (dist Karur), Thalaivasal(dist Salem), Nallathangal Resorvoir (dist Tiruppur), RSCL-2 Mundiampakkam (distVillupuram), Kodiayakarai (dist Nagapattinam), Virinjipuram AWS (dist Vellore),Radhapuram ARG (dist Tirunelveli), Manjalar (dist Theni), Zone 14 Perungudi (distChennai), Karaiyur (dist Pudukkottai), Pamban (dist Ramanathapuram), Rameswaram (distRamanathapuram), Puzhal ARG (dist Tiruvallur), Veerapandi (dist Theni),

Viraganur Dam(dist Madurai), Kodanad (dist The Nilgiris), Thirukkanur (dist Puducherry), Namakkal (distNamakkal), RSCL-2 Soorapattu (dist Villupuram), Natrampalli (dist Tirupathur),Bodinaickanur (dist Theni), Melalathur (dist Vellore), Kulithalai (dist Karur), Pechiparai AWS(dist Kanyakumari), Tiruppur_PWD (dist Tiruppur), Gudiyatham (dist Vellore),Jambukuttapatti (dist Krishnagiri), Rasipuram (dist Namakkal), Puduchatram (distNamakkal), RSCL-2 Kanjanur (dist Villupuram), Sendamangalam (dist Namakkal), Barur(dist Krishnagiri), Paramathivelur (dist Namakkal), Zone 03 Puzhal (dist Chennai), Tondi (distRamanathapuram), Vadapudupattu (dist Tirupathur), Karambakudi (dist Pudukkottai),Aranmanaipudur (dist Theni), Mylampatti (dist Karur), Sholayar (dist Coimbatore),Ponnamaravathi (dist Pudukkottai), Ponmalai (dist Thiruchirappalli), Ambur (dist Tirupathur),Madukkur (dist Thanjavur), Zone 02 Manali New Town (dist Chennai) 3 each,Marungapuri (dist Thiruchirappalli), Sothuparai (dist Theni), Dharmapuri PTO (distDharmapuri), Tiruppur South (dist Tiruppur), Zone 01 Thiruvottiyur (dist Chennai), Kodumudi(dist Erode), PWD Makkinampatti (dist Coimbatore), Kangeyam (dist Tiruppur), PochampalliARG (dist Krishnagiri), Kallakurichi AWS (dist Kallakurichi), Chinnar Dam (dist Krishnagiri),Subramania Siva Co.Op Sugar Mill (dist Dharmapuri), Zone 02 D15 Manali (dist Chennai),Uthagamandalam (dist The Nilgiris), Thirukoilur ARG (dist Kallakurichi), Kundadam (distTiruppur), Mandapam (dist Ramanathapuram), Thiruthuraipoondi (dist Thiruvarur),Sandhiyur KVK AWS (dist Salem), TCS Mill Kethandapatti (dist Tirupathur), Padalur (distPerambalur), Paiyur AWS (dist Krishnagiri), Tirupattur AWS (dist Tirupathur), Palacode (distDharmapuri), Arimalam (dist Pudukkottai), Koppampatti (dist Thiruchirappalli), Palavidithi(dist Karur), Velankanni (dist Nagapattinam), Nilakottai (dist Dindigul), Tirupattur PTO (distTirupathur), Shoolagiri (dist Krishnagiri), Krishnagiri (dist Krishnagiri), Thiruchendur AWS(dist Thoothukudi), Ketti (dist The Nilgiris), Glenmorgan (dist The Nilgiris), Uttamapalayam(dist Theni), Balamore (dist Kanyakumari), Anaimalai Taluk Office (dist Coimbatore),Tiruppur North (dist Tiruppur), Nkl Collectorate (dist Namakkal), Salem (dist Salem),Danishpet (dist Salem), Dharamapuri (dist Dharmapuri), Marandahalli (dist Dharmapuri),Kulasekarapattinam (dist Thoothukudi), Alangayam (dist Tirupathur), Jayamkondam ARG(dist Ariyalur), Periyakalapet ARG (dist Puducherry), Uthukuli (dist Tiruppur), Sular (distCoimbatore), Denkanikottai (dist Krishnagiri), Palladam (dist Tiruppur), Edapadi (dist Salem),Coonoor PTO (dist The Nilgiris) 2 each,Vaniyambadi (dist Tirupathur), Sankaridurg (dist Salem), Thathiengrpet (distThiruchirappalli), Pollachi (dist Coimbatore), Zone 13 Raja Annamalaipuram (dist Chennai),Kallikudi (dist Madurai), Coonoor AWS (dist The Nilgiris), Palacode ARG (dist Dharmapuri),Omalur (dist Salem), DC Office Tiruppur

(dist Tiruppur), Tiruchengode (dist Namakkal), KRPDam (dist Krishnagiri), Tiruppur AWS (dist Tiruppur), Kodivery (dist Erode), Mettur (dist Salem), Chittar-I (dist Kanyakumari), Chennimalai (dist Erode), Thalaignayer (dist Nagapattinam), Erumapatti (dist Namakkal), Vedharanyam AWS (dist Nagapattinam), Burliar (dist The Nilgiris), Thirukuvalai (dist Nagapattinam), Kothagiri (dist The Nilgiris), Kinnakorai (dist The Nilgiris), Coonoor (dist The Nilgiris), Varattupallam (dist Erode), Ennore AWS (dist Tiruvallur), Bhavanisagar (dist Erode), Adar Estate (dist The Nilgiris), Alakarai Estate (dist The Nilgiris), Siruvani Adivaram (dist Coimbatore), Modakkurichi (dist Erode), Perundururai (dist Erode), Sathyamangalam (dist Erode), Emeralad (dist The Nilgiris), Suralacode (dist Kanyakumari), Kinathukkadavu (dist Coimbatore), Tirupoondi (dist Nagapattinam), Podanur Railway Station (dist Coimbatore), Ammapettai (dist Erode), Avalanche (dist The Nilgiris), Kunda Bridge (dist The Nilgiris), Bhavani (dist Erode), Hosur (dist Krishnagiri), Kundah Bridge ARG (dist The Nilgiris), Sivalogam (Chittar II) (dist Kanyakumari), Ponneri (dist Tiruvallur), Perunchani Dam (dist Kanyakumari), Madukkarai Taluk Office (dist Coimbatore), Kannimar (dist Kanyakumari), Kumarapalayam (dist Namakkal) 1 each.

14.12.24: Gadana Dam (dist Tenkasi) 26, Oothu (dist Tirunelveli) 23, Nalumukku (dist Tirunelveli) 22, Tuticorin Airport ARG (dist Thoothukudi) 21, Kakkachi (dist Tirunelveli) 19, Manjolai (dist Tirunelveli) 18, Tuticorin (dist Thoothukudi) 16, Ramanadhi Dam Section (dist Tenkasi), Kodiayakarai (dist Nagapattinam), Papanasam (dist Tirunelveli) 15 each, Needamangalam (dist Thiruvarur), Shencottah (dist Tenkasi), Gundar Dam (dist Tenkasi), Servalar Dam (dist Tirunelveli) 14 each, Orthanad (dist Thanjavur), Virudhunagar AWS (dist Virudhunagar), Kurungulam (dist Thanjavur) 13 each, Kayalpattinam (dist Thoothukudi) 12, Pullambadi (dist Thiruchirappalli), Sattur (dist Virudhunagar), Satankulam (dist Thoothukudi), Sivakasi (dist Virudhunagar), Sattankulam ARG (dist Thoothukudi) 11 each, Thekkadi (dist Theni), Aruppukottai (dist Virudhunagar), Kallikudi (dist Madurai) 10 each, Tirukattupalli (dist Thanjavur), Manimutharu (dist Tirunelveli), Nagudi (dist Pudukkottai), Karuppanadhi Dam (dist Tenkasi), Budalur (dist Thanjavur), Pandavaiyar Head (dist Thiruvarur), Rajapalayam (dist Virudhunagar), Adiramapattinam (dist Thanjavur), Virudhunagar (dist Virudhunagar) 9 each, Shanmuganadhi (dist Theni), Kumbakonam (dist Thanjavur), Madukkur (dist Thanjavur), Kodavasal (dist Thiruvarur), Muthupet (dist Thiruvarur), Valangaiman (dist Thiruvarur), Peravurani (dist Thanjavur), Kovilpatti (dist Thoothukudi), Thirumanur (dist Ariyalur), Thiruidaimaruthur (dist Thanjavur), Ponnaniyar Dam (dist Thiruchirappalli) 8 each, Ayinkudi (dist Pudukkottai), Tiruvaiyaru (dist Thanjavur), Kariyapatti (dist Virudhunagar), Idayapatti (dist Madurai), Thuvakudi IMTI (dist Thiruchirappalli), Thanjavur (dist Thanjavur), Vedaranyam (dist Nagapattinam), Pattukottai (dist Thanjavur), Nannilam (dist Thiruvarur), Thirukuvalai (dist Nagapattinam), Thiruthuraipoondi (dist Thiruvarur) 7 each, Neivasal Thenpathi (dist Thanjavur), Tuticorin Rly Station ARG (dist Thoothukudi), Tirupoondi (dist

Nagapattinam), Kodaikannal Boat Club (dist Dindigul), Thalaigayyer (dist Nagapattinam), Tiruchirappalli Town (dist Thiruchirappalli), Mannargudi (dist Thiruvarur), Nandhiyar Head (dist Thiruchirappalli), Kodaikanal (dist Dindigul), Tiruchirappalli Junction (dist Thiruchirappalli), Vembakottai (dist Virudhunagar), Arantangi (dist Pudukkottai), Thanjai Papanasam (dist Thanjavur), Thenkasi (dist Tenkasi), Kuruvadi (dist Ariyalur), Vettikadu (dist Thanjavur), Tiruvarur (dist Thiruvarur), Echanviduthi (dist Thanjavur), Avudayarkoil (dist Pudukkottai), Velankanni (dist Nagapattinam), Tirumangalam (dist Madurai) 6 each, Manamelkudi (dist Pudukkottai), Periyakulam (dist Theni), Ayikudi (dist Tenkasi), Manjalaru (dist Thanjavur), Periyar (dist Theni), Sivagiri (dist Tenkasi), Lalgudi (dist Thiruchirappalli), Uppar Dam (dist Tiruppur), Ottapadiram (dist Thoothukudi), Nagapattinam (dist Nagapattinam), Kannadaian Anicut (dist Tirunelveli), Aduthurai AWS (dist Thanjavur), Lower Anaicut (dist Thanjavur), Vedharanyam AWS (dist Nagapattinam), Vallam (dist Thanjavur), Pilavakkal Periyar Dam (dist Virudhunagar), Tirupuvanam (dist Sivagangai), Samayapuram (dist Thiruchirappalli), Uttamapalayam (dist Theni), Kilanilai (dist Pudukkottai), Grand Anaicut (dist Thanjavur), Kudimiyamalai (dist Pudukkottai), Karaikudi (dist Sivagangai), Kovilankulam (dist Virudhunagar), Old Taluk Office Srivaikuntam (dist Thoothukudi), Pudukottai (dist Pudukkottai) 5 each, Kodanad (dist The Nilgiris), Kundadam (dist Tiruppur), Tiruchendur (dist Thoothukudi), Thogamalai (dist Karur), Kallakudi (dist Thiruchirappalli), Alangudi (dist Pudukkottai), Kovilpatty (dist Thiruchirappalli), Illuppur (dist Pudukkottai), Manjalar (dist Theni), Anaipalayam (dist Karur), Kadaladi (dist Ramanathapuram), Manapparai (dist Thiruchirappalli), Suthamalli Dam (dist Ariyalur), Viralimalai (dist Pudukkottai), Srivilliputhur (dist Virudhunagar), Tirupathur (dist Sivagangai), Annavasal (dist Pudukkottai), Usilampatti (dist Madurai), Navalur Kottapattu (dist Thiruchirappalli), Ponmalai (dist Thiruchirappalli), Tallakulam (dist Madurai), Watrap (dist Virudhunagar), Sholavandan (dist Madurai), Adavinainnarkoil Dam (dist Tenkasi), Mayanoor (dist Karur), Ayyampettai (dist Thanjavur), Manamadurai (dist Sivagangai), Gudalur (dist Theni), Thanjavur PTO (dist Thanjavur), Elumalai (dist Madurai), Vattamalai Reservoir (dist Tiruppur), Paramathivelur (dist Namakkal), Peraiyur (dist Madurai) 4 each, Thuvakudi AWS (dist Thiruchirappalli), Andipatti (dist Theni), Adanakkotai (dist Pudukkottai), PWD Makkinampatti (dist Coimbatore), Kangeyam (dist Tiruppur), Arimalam (dist Pudukkottai), Udayalipatti (dist Pudukkottai), Mettupatti (dist Madurai), Surangudi (dist Thoothukudi), Illayangudi (dist Sivagangai), Vaigai Dam (dist Theni), Aruppukottai KVK AWS (dist Virudhunagar), Karaikal (dist Karaikal), Madurai Airport (dist Madurai), Sothuparai (dist Theni), Malaiyur (dist Pudukkottai), Krishnarayapuram (dist Karur), Devimangalam (dist Thiruchirappalli), Ambasamudram (dist Tirunelveli), Tenkasi AWS (dist Tenkasi), Dharapuram (dist Tiruppur), Vaippar (dist Thoothukudi), Valparai PAP (dist Coimbatore), Mulanur (dist Tiruppur), Karur (dist Karur), Tiruchirappalli Airport (dist Thiruchirappalli), Sethu Bhaskar Agri College AWS (dist Sivagangai), Vathalai Anaicut (dist Thiruchirappalli), Periyapatti (dist Madurai), Sivagangai PWD TB (dist Sivagangai), Thirumoorthy IB (dist Tiruppur), Paramakudi (dist Ramanathapuram), Kinnakorai (dist The Nilgiris), Thuraiyur (dist Thiruchirappalli), Koppampatti (dist Thiruchirappalli), Tarangambadi (dist Mayiladuthurai), Kulasekarapattinam

(dist Thoothukudi), Thirumoorthi Dam (dist Tiruppur), Karaikal AWS (dist Karaikal), Nilakottai (dist Dindigul), Puthu Vettakudi (dist Perambalur), Valparai Taluk Office (dist Coimbatore), Kil Kotagiri Estate (dist The Nilgiris), Madurai North (dist Madurai), Vedasandur (dist Dindigul), Madurai city (dist Madurai), Gandarvakottai (dist Pudukkottai), Aranmanaipudur (dist Theni), Dindigul (dist Dindigul), Tiruppur_PWD (dist Tiruppur), Musiri (dist Thiruchirappalli), Maniyachi (dist Thoothukudi), Perungalur (dist Pudukkottai), Tobacco Station (VDR) (dist Dindigul), Kovilpatti AWS (dist Thoothukudi), Panjapatti (dist Karur), Thianiamangalam (dist Madurai), Karambakudi (dist Pudukkottai), Periyanaickenpalayam (dist Coimbatore), Aravakurichi (dist Karur), Coonoor (dist The Nilgiris), Billimalai Estate (dist The Nilgiris), Palani (dist Dindigul), PWD Vaarappatti (dist Coimbatore), Singampunari (dist Sivagangai) 3 each, Keeranur (dist Pudukkottai), Thiruchuzhi (dist Virudhunagar), Sivaganga (dist Sivagangai), Jayamkondam (dist Ariyalur), Devakottai (dist Sivagangai), Andipatti (dist Madurai), Viraganur Dam (dist Madurai), Sholayar (dist Coimbatore), Palladam (dist Tiruppur), Oddanchatram (dist Dindigul), Tirumayam (dist Pudukkottai), Coonoor PTO (dist The Nilgiris), Karaiyur (dist Pudukkottai), Kodumudiyaru Dam (dist Tirunelveli), Ketti (dist The Nilgiris), Pollachi (dist Coimbatore), K.M.Koil (dist Cuddalore), Vadipatti (dist Madurai), Kadavur (dist Karur), Madathukulam (dist Tiruppur), Sankarankoil (dist Tenkasi), Pulipatti (dist Madurai), Namakkal (dist Namakkal), Tiruppur South (dist Tiruppur), Udumalpet (dist Tiruppur), Kalugumalai (dist Thoothukudi), Kallandri (dist Madurai), Siruvani Adivaram (dist Coimbatore), T.Palur (dist Ariyalur), Lalpet (dist Cuddalore), Ettayapuram (dist Thoothukudi), Mayiladuthurai (dist Mayiladuthurai), Melur (dist Madurai), Kuppanampatti (dist Madurai), Ariyalur PTO (dist Ariyalur), Tiruppur North (dist Tiruppur), Kamatchipuram (dist Dindigul), Vellakoil (dist Tiruppur), Ariyalur Taluk Office (dist Ariyalur), Kamudhi (dist Ramanathapuram), P.N.Palayam ARG (dist Coimbatore), Kothagiri (dist The Nilgiris), Bodinaickanur (dist Theni), Valinokam (dist Ramanathapuram), Thirupathisaram AWS (dist Kanyakumari), Mimisal (dist Pudukkottai), Coimbatore South (dist Coimbatore), Sathiar (dist Madurai), Sembanarkoil PWD (dist Mayiladuthurai), Palayamkottai (dist Tirunelveli), Tirunelveli AWS (dist Tirunelveli), Sulur (dist Coimbatore), Thenparanadu (dist Thiruchirappalli), TNAU Coimbatore (dist Coimbatore), Mohanur (dist Namakkal), Kunda Bridge (dist The Nilgiris), Coimbatore_AMFU AWS (dist Coimbatore), Marungapuri (dist Thiruchirappalli), Kulithalai (dist Karur), Manalmedu (dist Mayiladuthurai), Chittampatti (dist Madurai), Geddai (dist The Nilgiris), Kodumudi (dist Erode), Chettikulam (dist Perambalur), Cheranmahadevi (dist Tirunelveli) 2 each, Ponnamaravathi (dist Pudukkottai), Ramanathapuram (dist Ramanathapuram), Avalanche (dist The Nilgiris), Amaravathy Dam (dist Tiruppur), Tiruppur AWS (dist Tiruppur), Cincona (dist Coimbatore), Thathiengrpet (dist Thiruchirappalli), Puducherry AWS (dist Puducherry), Sendamangalam (dist Namakkal), Chinnakalar (dist Coimbatore), Ariyalur AWS (dist Ariyalur), Puducherry (dist Puducherry), Kundah_Bridge ARG (dist The Nilgiris), Chennimalai (dist Erode), Glenmorgan (dist The Nilgiris), Chamraj Estate (dist The Nilgiris), Kalakadu (dist Tirunelveli), Uthukuli (dist Tiruppur), Kadambur (dist Thoothukudi), Thondamuthur (dist Coimbatore), Sendurai (dist Ariyalur), Veerapandi (dist Theni), Uthagamandalam (dist The Nilgiris), Burliar (dist The

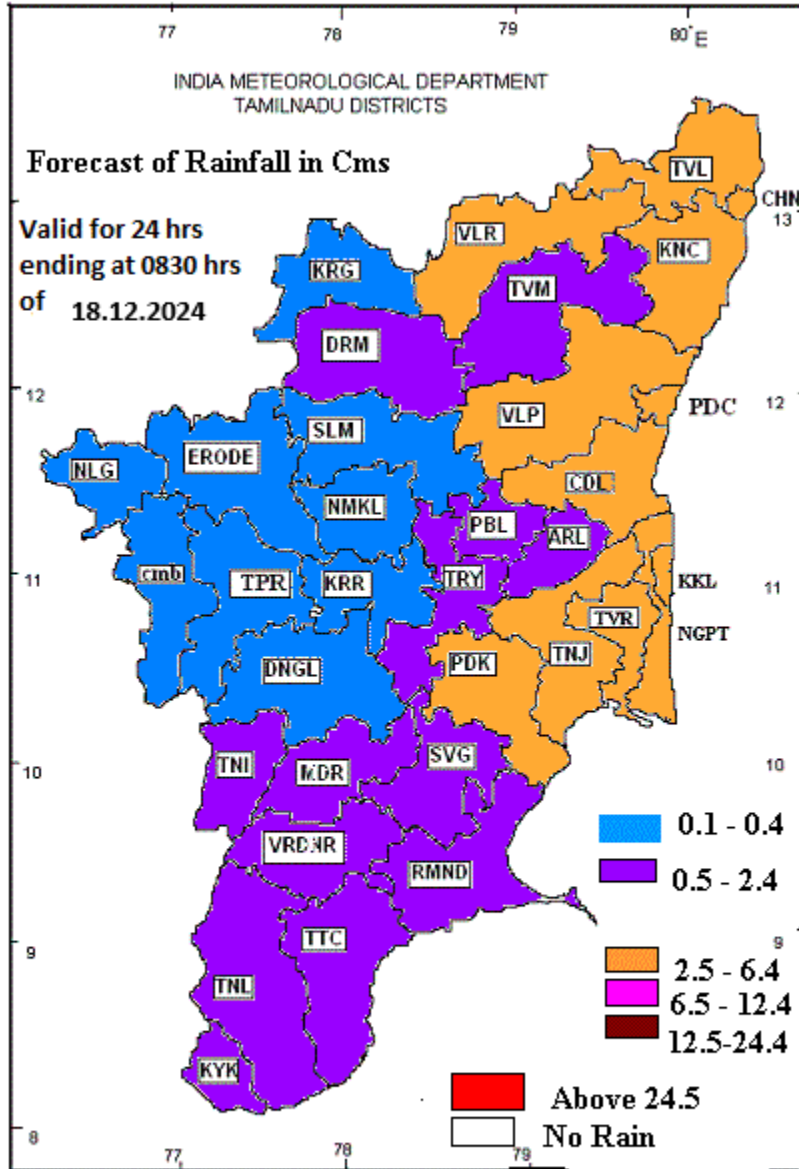
Nilgiris), Perambalur (dist Perambalur), Emeraldad (dist The Nilgiris), Valparai PTO (dist Coimbatore), Azhiyar (dist Coimbatore), Palani ARG (dist Dindigul), Modakkurichi (dist Erode), Alakarai Estate (dist The Nilgiris), DC Office Tiruppur (dist Tiruppur), Tondi (dist Ramanathapuram), Palavidithi (dist Karur), Coimbatore AP (dist Coimbatore), Podanur Railway Station (dist Coimbatore), Natham AWS (dist Dindigul), Perambalur AWS (dist Perambalur), Sirkali (dist Mayiladuthurai), Nkl Collectorate (dist Namakkal), Veppanthattai (dist Perambalur), Adar Estate (dist The Nilgiris), Anaimalai Taluk Office (dist Coimbatore), Kinathukkadavu (dist Coimbatore), Pillur Dam Mettupalayam (dist Coimbatore), Thammampatty (dist Salem), Madukkarai Taluk Office (dist Coimbatore), Natham (dist Dindigul), Sirugamani KVK AWS (dist Thiruchirappalli), Padalur (dist Perambalur), Tirunelveli (dist Tirunelveli), Pallamorkulam (dist Ramanathapuram), Tiruvadana (dist Ramanathapuram), K.Paramathi (dist Karur), Mettupalayam (dist Coimbatore), Yelagiri ARG (dist Tirupathur), Kadalkudi (dist Thoothukudi), Thaluthalai (dist Perambalur), Mylampatti (dist Karur) 1 each.

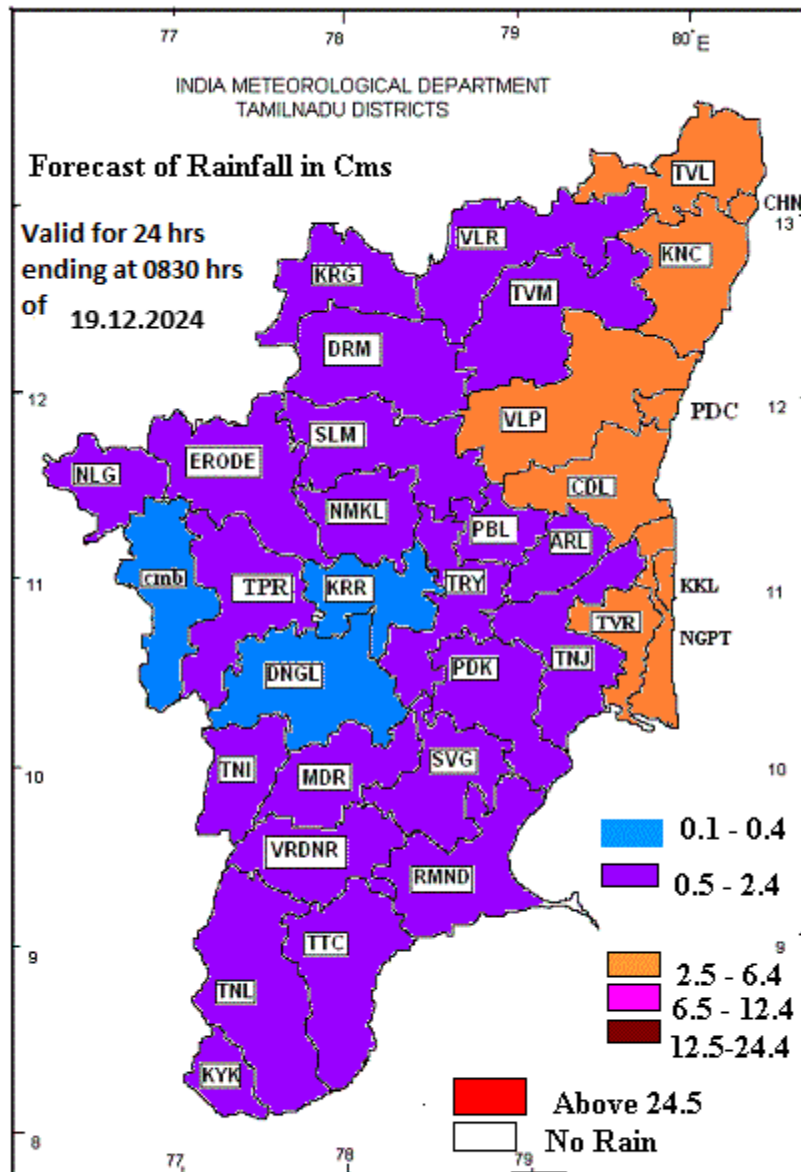
15.12.24 : Papanasam (dist Tirunelveli) 13, Manimutharu (dist Tirunelveli) 10, Kodaikannal Boat Club (dist Dindigul) 9, Oothu (dist Tirunelveli), Kayalpattinam (dist Thoothukudi) 8 each, Tuticorin (dist Thoothukudi), Servalar Dam (dist Tirunelveli), Nalumukku (dist Tirunelveli) 7 each, Tuticorin Airport ARG (dist Thoothukudi), Tuticorin Rly Station ARG (dist Thoothukudi) 6 each, Kakkachi (dist Tirunelveli), Mimisal (dist Pudukkottai), Ramanadhi Dam Section (dist Tenkasi) 5 each, Ambasamudram (dist Tirunelveli), Kannadaian Anicut (dist Tirunelveli), Manjolai (dist Tirunelveli), Idayapatti (dist Madurai) 4 each, Tondi (dist Ramanathapuram), Kalakadu (dist Tirunelveli), Kodaikanal (dist Dindigul), Nambiyar Dam (dist Tirunelveli), Periyakulam (dist Theni), Tiruvadana (dist Ramanathapuram), Balamore (dist Kanyakumari), Gadana Dam (dist Tenkasi), Devakottai (dist Sivagangai), Manimuthar_Dam ARG (dist Tirunelveli), Gundar Dam (dist Tenkasi), Avudayarkoil (dist Pudukkottai), Vadipatti (dist Madurai) 3 each, Ayinkudi (dist Pudukkottai), Tirumangalam (dist Madurai), Manamelkudi (dist Pudukkottai), Nagudi (dist Pudukkottai), Sethu Bhaskar Agri College AWS (dist Sivagangai), Sothuparai (dist Theni), Andipatti (dist Madurai), Ayikudi (dist Tenkasi), Old Taluk Office Srivaikuntam (dist Thoothukudi), Satankulam (dist Thoothukudi), Mettupatti (dist Madurai), Kayathar (dist Thoothukudi), Thiruthuraipoondi (dist Thiruvarur), Sattankulam ARG (dist Thoothukudi), Nilakottai (dist Dindigul), Kulasekarapattinam (dist Thoothukudi), Manjalar (dist Theni), Sivagangai PWD TB (dist Sivagangai), Vaigai Dam (dist Theni), Kallandri (dist Madurai), Periyapatti (dist Madurai), Gudalur (dist Theni) 2 each, Theerthandathanam (dist Ramanathapuram), Andipatti (dist Theni), Nanguneri (dist Tirunelveli), Thaniamangalam (dist Madurai), Arantangi (dist Pudukkottai), Vedanatham (dist Thoothukudi), Chittampatti (dist Madurai), Vattanam (dist

Ramanathapuram), Tiruchendur (dist Thoothukudi), Sivaganga (dist Sivagangai), Kodumudiyaru Dam (dist Tirunelveli), Sholavandan (dist Madurai), Palayamkottai (dist Tirunelveli), Tirupuvanam (dist Sivagangai), Muthupet (dist Thiruvarur), Keelaarasadi (dist Thoothukudi), Cheranmahadevi (dist Tirunelveli), Bodinaickanur (dist Theni), Chinnakalar (dist Coimbatore), Kadaladi (dist Ramanathapuram), Veerapandi (dist Theni), Usilampatti (dist Madurai), Karuppanadhi Dam (dist Tenkasi), Karaikudi (dist Sivagangai), Tenkasi AWS (dist Tenkasi), Moolaikaraipatti (dist Tirunelveli), Kadambur (dist Thoothukudi), Kuppanampatti (dist Madurai), Tallakulam (dist Madurai), Ramnadu KVK AWS (dist Ramanathapuram), Tirunelveli AWS (dist Tirunelveli), Yelagiri ARG (dist Tirupathur), Amaravathy Dam (dist Tiruppur), Ramanathapuram (dist Ramanathapuram), Valparai PAP (dist Coimbatore), Aranmanaipudur (dist Theni), Thenkasi (dist Tenkasi), Pattukottai (dist Thanjavur), Melur (dist Madurai), Kalugumalai (dist Thoothukudi), Palani (dist Dindigul), Thirumoorthy IB (dist Tiruppur), Sathiar (dist Madurai), Shanmuganadhi (dist Theni), Thirumoorthi Dam (dist Tiruppur), Shencottah (dist Tenkasi), Sankarankoil (dist Tenkasi), Kodumudi (dist Erode), Uttamapalayam (dist Theni) , Arimalam (dist Pudukkottai) 1 each.

16.12.24 : Oothu (dist Tirunelveli) 3, Nalumukku (dist Tirunelveli), Kakkachi (dist Tirunelveli) 2 each, Manjolai (dist Tirunelveli) 1.

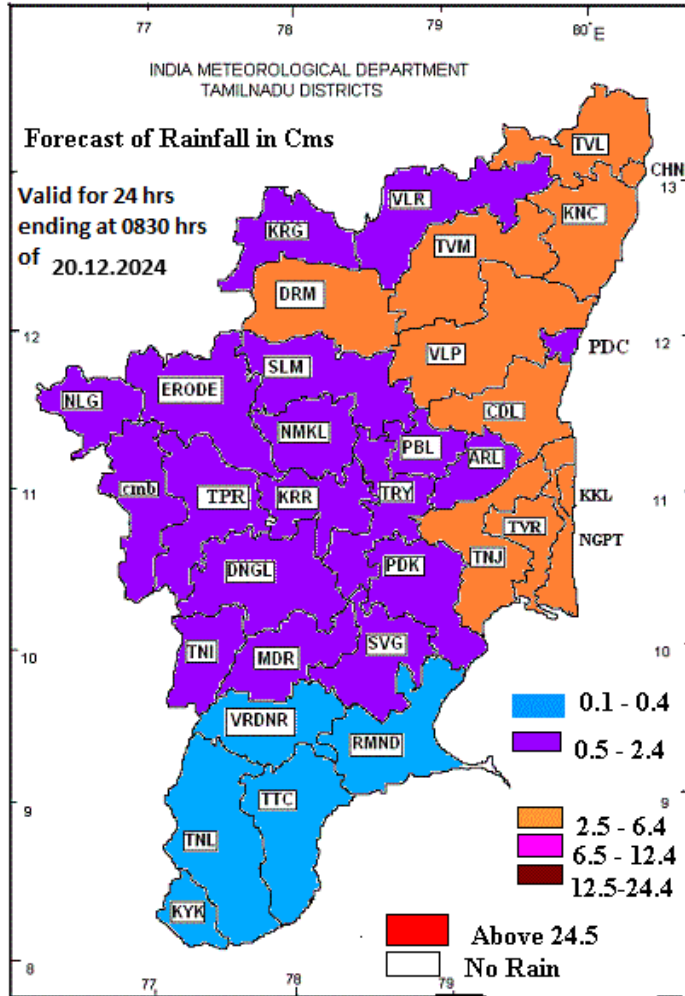
**DISTRICT LEVEL ENSEMBLE WEATHER FORECAST ISSUED ON: 17.12.24
VALID FOR THE NEXT 5 DAYS**





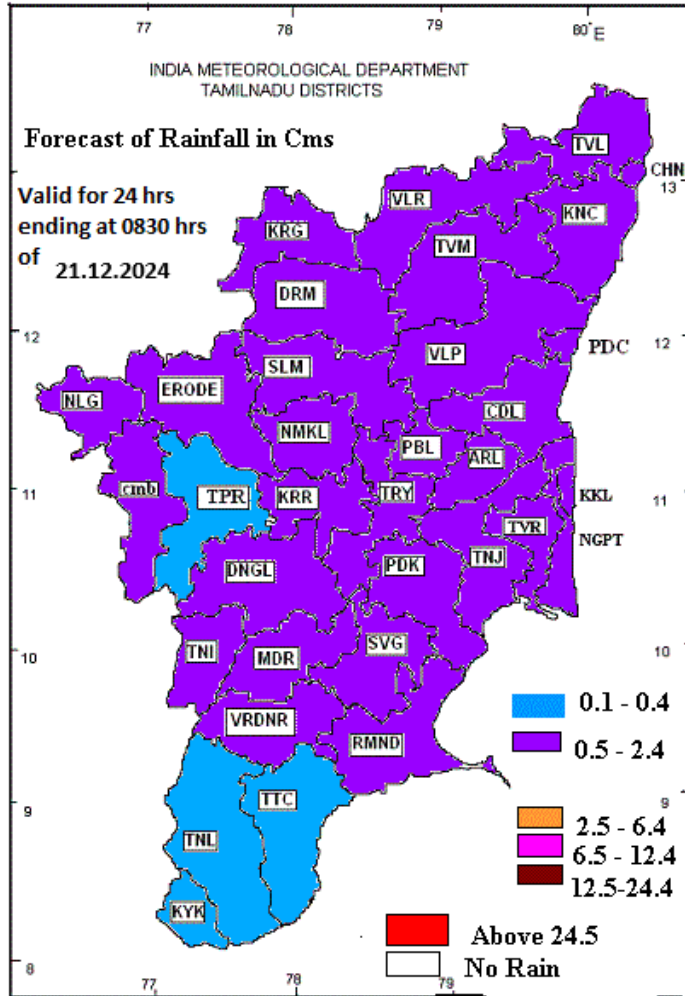


INDIA METEOROLOGICAL DEPARTMENT
REGIONAL METEOROLOGICAL CENTRE, CHENNAI



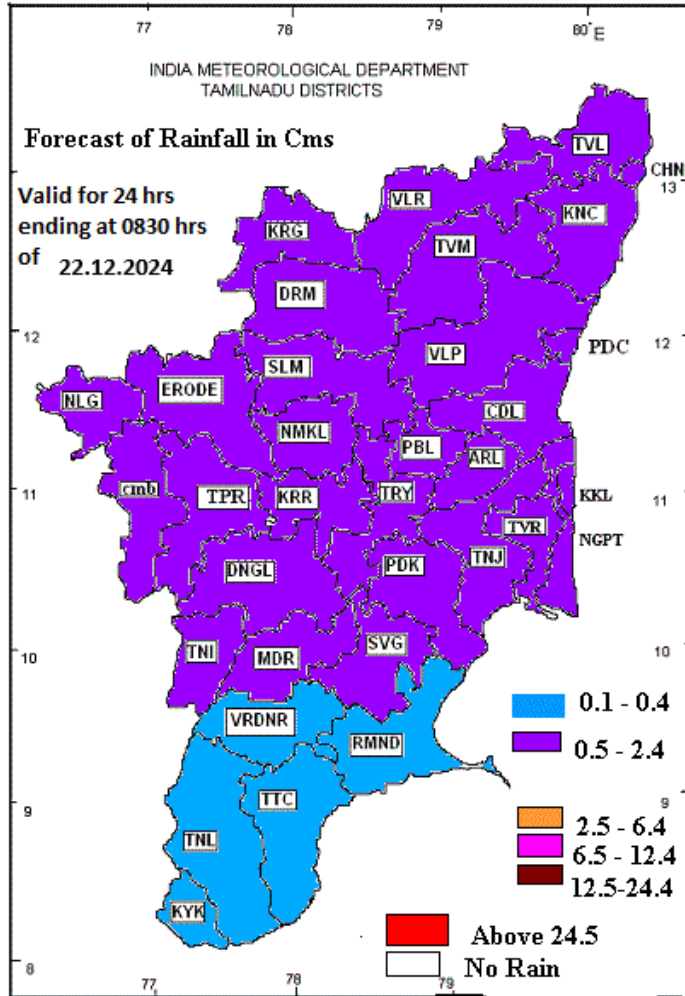


INDIA METEOROLOGICAL DEPARTMENT
REGIONAL METEOROLOGICAL CENTRE, CHENNAI





INDIA METEOROLOGICAL DEPARTMENT
REGIONAL METEOROLOGICAL CENTRE, CHENNAI



District-wise Agromet Advisories

Chennai, Kancheepuram, Villupuram, Tiruvannamalai, Tiruvallur, Vellore and Cuddalore

SMS Advisory:

(18.12.2024-20.12.2024) Heavy to very heavy rain is likely to occur at isolated places over Chennai, Tiruvallur, Chengalpattu, Kancheepuram, Villupuram and Cuddalore districts of Tamil Nadu.

Livestock Advisory:

1. The young livestock must be protected from cold drafts with straw bedding and gunny bag so that the body temperature would be maintained.
2. Since this rainy season is conducive for occurrence of Coccidiosis in rabbit colonies strict biosecurity should be implicated.
3. The feed soiled water must be disposed off to prevent aflotoxicosis or they must be completely dried to wet free
4. The drinking water may be boiled to body temperature before giving to livestock so that they will not suffer cold shock
5. The breeding materials of pen must be maintained damp free
6. The carcasses must be disposed off sufficing the preventive measures
7. Since stagnated water may predispose to water borne diseases, care must be exercised to clean and disinfect them.
8. To avoid pneumonia in calves and kids prevent them from drenching in rain water
9. To prevent the ammonia accumulation there must be in the pig house, good ventilation
10. Provision of 5% shell grit to layers improves the egg quality.

Agricultural advisory Rice:

Since rain is anticipated, provide drainage for the rice field. To avoid fertilizer application, insecticides or pesticides spray and postpone irrigation.

Farmers are advised provide adequate drainage facilities and drain the stagnant rain and flood water in the rice field and provide aeration to the roots. Submerged paddy crops will be affected by nutrition deficiency so farmers are advised to apply 50 kg of ammonium sulphate or 42 kg of ammonium chloride / acre (or) apply 22 kg of urea + 18 kg of gypsum + 4 kg of neem cake per acre allow to soak overnight and 17 Kg of potash should be mixed while spraying next day.

Due to continuous rainfall leaf folder and stem borer infestation found in paddy crop. To manage them, spray carbosulfan 400 ml/ac or cartap hydrochloride 600 g/ac during morning or evening hours. (Spray after rainfall)

Due to prevailing weather conditions gall midge infestation is found in paddy crop. To control spray chlorpyrifos 20% EC 500 ml/ac or phosalone 35 EC 600 ml/ac. (Spray after rainfall) Due to prevailing weather condition blast infection was observed in paddy crop. To manage the blast, spray tricyclazole 75% WP 200 g/acre or carbendazim 50WP @ 200g/acre at morning or evening time. (Spray after rainfall)

Groundnut:

Provide drainage for the groundnut field.

Continuous rainfall will be expected forthcoming days, so farmers are advised to avoid groundnut sowing. Provide proper drainage for sown areas. After rainfall groundnut growing farmers reduce the seed borne pathogens, seedling disease and root rot infections treat the seeds with carbendazim @ 2.0 g/kg of seed 24 hours before sowing (or) *Trichoderma viride* @ 4.0 g/kg of seed (or) *Bacillus subtilis* @ 10 g/kg seed.

Turmeric:

To ensure the drainage facility for avoiding rhizome rot disease in turmeric field.

Coconut:

To control rhinoceros beetle in rainy season, setup Rhino lure pheromone trap @ 2 traps/acre

Banaan:

High wind speed (>10 kmph) is expected on forthcoming days, so prop up 5 month old banana trees.

Coimbatore, Erode and Tiruppur

Agro Advisory

Crop	Stage	Advisory
General		Light to Moderate rainfall is expected for the next five days and the wind speed is expected to be around 10 kmph in Western zone districts. Provide adequate drainage facility to all crops and postpone the irrigation. Partly cloudy weather and moderate relative humidity are anticipated, avoid soil application of fertilizer, as root activity may be limited.
Rice	Vegetative to Flowering	Since weather condition is favourable for blast incidence in rice. Monitor the crop carefully and spray initially with tricyclozole @ 1g / litre followed by second spray with 1g carbendazim / litre of water on rain free days.
Bengalgram	Vegtative & Flowering	Prevailing weather conditions are favourable for the wilt disease in Bengal gram therefore soil application of pseudomonas florescence @ 2.5 kg /ha or spray Carbendazim 1g /litre of water.
Turmeric	Rhizome development	Because of high soil moisture and humidity leaf spot disease in turmeric may be noticed, hence spray Carbendazim @ 500m in 500 lit water. Since rhizome development stage is more sensitive to high soil moisture, provide adequate drainage. To prevent rhizome rot apply 2.5 kg/ha of <i>Trichoderma viridie</i> in 500 lit water for drenching or mixed with 50kg sand for band application.
Banana & sugarcane		Due to high wind speed (10kmph) and anticipating rainfall propping in sugarcane and support for five months and above old banana may be done immediately.
Coconut		Considering the less rain days, inward trench around the coconut trees may be prepared to harvest forthcoming rains in to the root zone. These who have not applied the second fertilizer dose, apply 650 g of urea 1kg of super phosphate and mop at semi circular pits.
Animal Husbandry		Considering the consumption of newly emerged grasses during the monsoon season, deworming may be given to sheep, goat, cattle and milch animals. Provide adequate drainage around the animal shed. In addition, hang dry gunny bags along the open windows and doors to arrest the cool wind.

SMS advisory:

Weather condition is favourable for blast incidence in rice. Spray initially with tricyclozole @ 1g / litre followed by second spray with 1g carbendazim / litre of water on rain free days.

Nilgiris

General Advisory: Management of seedborne diseases Seeds can be treated with Trichodermaasperellum @ 4g/kg or Bacillus subtilis @ 10g/kg to manage seed borne pathogens. Further, soil testing has to be done before any cropping programme.

SMS Advisory: To manage Late blight in potato crop, • Foliar spray of mancozeb @ 2 g/l or chlorothalonil @ 2 g/l on 45, 60 and 75 days after planting is recommended during the rain free period.

Horticulture Specific Advisory:

Horticulture (Stage)	Horticulture Specific Advisory
CARROT	Rust fly management in carrot Soil application of chlorantraniliprole granules insecticide @ 4kg/acre at 45 – 50 days after sowing may be given during rain free period.
CARROT	For the management of nematode in carrot, soil application of neem cake @ 1 ton/ha at planting. Biofumigation of mustard plants followed by application of neem cake @ 250kg/ha along with Purpureocilliumlilacinum @ 5kg/ha is recommended, applying for may be given during rain free period.
TEA	Management of blister blightdisease in tea • Removal and destruction of affected leaves and shoots by pruning • Spray hexaconazole @ 200 ml + copper oxychloride @ 210 g/ha at 5 days interval (or) • Copper oxychloride @ 210 g + propiconazole @ 200 ml/ha at 10 days interval, particularly during June-September and October-November months • Avoid cultivation of susceptible varieties and grow resistant varieties CIB recommendation • Spray any one of the following chemicals • Hexaconazole 5% EC @ 200ml/ha (or) • Propiconazole 25% EC @ 125-250ml/ha (or) • Carbendazim 12%+ Mancozeb 63% WP @ 1250g/ha (or) • Hexaconazole 4% + Zineb 68% WP @ 625g/ha
CHILLI	Integrated disease management strategies for the management of virus diseases in vegetables • Select disease free seeds • Follow crop rotation • Collect and destroy the virus affected plants • Nursery beds should be covered with nylon net or straw • Raise 2-3 rows of maize or sorghum as border crop • Install sticky traps (blue& yellow) @ 5 nos/acre. • If necessary, spray the crop with systemic insecticides, Dimethoate @ 2.0 ml/litre (or) Thiamethoxam @ 0.2 ml/litre (or) Imidacloprid @ 0.2 ml/litreof water using hand sprayer during the rain free period.

Dindigul

SMS Advisory	Chances of light rain during 18, 19, 20, 21 Dec & Moderate rain on 22 Dec. Maximum temperature would be in the range of 30°C to 31°C and the minimum temperature would be between 21°C - 22°C. Generally cloudy sky will appear for the next five days. Wind is expected with the speed of 8-10 Kmph from, East & Northeast directions.
--------------	---

General Advisory:

Extended range Forecast for next week (20th to 26th December 2024):

Rainfall:

As per extended range predictions, there is possibility of near normal to slightly above normal rainfall likely over the district during 20th to 26th December 2024.

Maximum Temperature:

Maximum temperatures are likely to be slightly above normal and are likely to be in the range 26°C to 32°C over the plains of the district during next week. 20th to 26th December 2024

Minimum Temperature:

Minimum temperatures are likely to be slightly above normal and are likely to be in the range 16°C to 20°C over the district during next week 20th to 26th December 2024.

Due to the recent rains, the farmers should immediately remove the excess rainwater accumulated in the paddy fields and the lands where vegetable and horticultural crops are cultivated.

Weather Based Agro-Advisories: (Snake gourd, Cotton & Animal Husbandry)

Snake gourd:

The occurrence of Fruit flies was noticed in Snake gourd and bitter gourd. Fruit fly maggots feed on the pulp of the fruits, oozing resinous fluid from fruits, distorted and malformed fruits, premature dropping of fruits, and also unfit for consumption.

Use attractants like citronella oil, eucalyptus oil, vinegar (acetic acid), and lactic acid to trap flies. Use fly traps @ 5 Traps/ha. Keep 5gm of wet fishmeal in polythene bags (20 x 15cm) punch six holes with 3 mm dia. Add 0.1 ml of Chlorpyrifos.

Chlorpyrifos should be added every week and fishmeal renewed once in 20 days.

Crop protection activities should be done only on non-rainy days.

Cotton:

Spraying of Naphthalene Acetic Acid (NAA) for Cotton crop will give good results. 40 mg of NAA dissolved in one litre of water will give 40 ppm.

Spray 40 ppm NAA at 60 and 90 days after sowing on the crop to prevent the early shedding of buds and squares and to increase the yield.

Plant protection activities can be done only on non-rainy days.

Animal Husbandry:

Due to the prevailing cold weather conditions, cattle rearers are advised to allow the cattle to graze only after 2 hours of sunrise.

Cover the cow shed with gunny bags, and keep the floor in dry condition.

Dry fodder and greens should be fed without moisture to avoid fungal infection.

Madurai

SMS Advisory	Chances of Moderate rain during 18, 19, 20 Dec & light rain on 21, 22 Dec. Maximum temperature would be in the range of 30°C to 31°C and the minimum temperature would be between 21°C - 22°C. Generally cloudy sky will appear for the next five days. Wind is expected with the speed of 8-10 Kmph from, East & Northeast directions.
--------------	---

General Advisory:

Extended range Forecast for next week (20th to 26th December 2024):

Rainfall:

As per extended range predictions, there is possibility of near normal to slightly above normal rainfall likely over the district during 20th to 26th December 2024.

Maximum Temperature:

Maximum temperatures are likely to be slightly above normal and are likely to be in the range 26°C to 32°C over the plains of the district during next week. 20th to 26th December 2024

Minimum Temperature:

Minimum temperatures are likely to be slightly above normal and are likely to be in the range 16°C to 20°C over the district during next week 20th to 26th December 2024.

Due to the recent rains, the farmers should immediately remove the excess rainwater accumulated in the paddy fields and the lands where vegetable and horticultural crops are cultivated.

Weather Based Agro-Advisories: (Paddy, Banana & Animal Husbandry)

Paddy:

Leaf folder incidence is being noticed in the samba/thaladi paddy fields due to prevailing weather condition. To manage this, spray Profenophos 50 EC @ 400 ml/acre in 200 litre of water using the hand sprayer.

Crop protection activities should be done only on non-rainy days.

Banana:

Farmers are requested to give a foliar spray of Banana Booster @ 5 grams per litre of water along with one small pocket of shampoo and extracted lemon juice.

Spray continuously at monthly intervals starting from three months after planting till the bunch formation stage.

Animal Husbandry:

Due to the prevailing cold weather conditions, cattle rearers are advised to allow the cattle to graze only after 2 hours of sunrise.

Cover the cow shed with gunny bags, and keep the floor in dry condition.

Dry fodder and greens should be fed without moisture to avoid fungal infection.

Pudukottai

SMS Advisory	Chances of Moderate rain during 18, 19, 20 & 22 Dec. Maximum temperature would be in the range of 28°C to 29°C and the minimum temperature would be between 21°C - 22°C. Generally cloudy sky will appear for the next five days. Wind is expected with the speed of 12-14 Kmph from, Northeast direction.
--------------	--

General Advisory:

Extended range Forecast for next week (20th to 26th December 2024):

Rainfall:

As per extended range predictions, there is possibility of near normal to slightly above normal rainfall likely over the district during 20th to 26th December 2024.

Maximum Temperature:

Maximum temperatures are likely to be slightly above normal and are likely to be in the range 26°C to 32°C over the plains of the district during next week. 20th to 26th December 2024

Minimum Temperature:

Minimum temperatures are likely to be slightly above normal and are likely to be in the range 20°C to 24°C over the district during next week 20th to 26th December 2024.

Due to the recent rains, the farmers should immediately remove the excess rainwater accumulated in the paddy fields and the lands where vegetable and horticultural crops are cultivated.

Heavy Wind Warning:

Strong gusty wind with the speed of 35 – 45 kmph is likely to occur at isolated places over the district on 18.12.24 and 19.12.24. Hence farmers are advised to provide propping in sugarcane and to provide adequate support for crops like Banana, Papaya, Guava and Moringa crops, to prevent from lodging.

For Gourds check the structures / pandhals for damages in the strings and poles and provide adequate support.

Postpone the spraying activity.

Do not allow the animals to graze outside, standing near the trees, don't tie the animals on electric poles. Provide safe shelter for the animals.

Weather Based Agro-Advisories: (Bhendi, Groundnut & Animal Husbandry)

Bhendi:

The incidence of aphids is seen in Bhendi. Infesting tender shoots and under the surface of the leaves, curling and crinkling of leaves and stunted growth are the symptoms of damage.

To control this, spray any one of the following insecticides spray NSKE @ 500 ml/ha.

Or by chemical method, spray Imidacloprid 200 SL @ 100ml/ha (500 litre spray fluid/ha).

Groundnut:

Farmers can cultivate Groundnut during Margazhi Pattam (December-January).

Varieties suitable for this season are TMV 7, CO 3, COGn 4, VRI 2, VRI 3, ALR 3, VRIGn5, VRIGn 6, TMVGn 13.

Seed treatment with Trichoderma viride @ 4gm/kg of seed (or) Pseudomonas fluorescens 10 gm/kg of seed will be effective against root and collar rot disease in groundnut.

Animal Husbandry:

Due to the prevailing cold weather conditions, cattle rearers are advised to allow the cattle to graze only after 2 hours of sunrise.

Cover the cow shed with gunny bags, and keep the floor in dry condition.

Dry fodder and greens should be fed without moisture to avoid fungal infection.

Ramanathapuram

SMS Advisory	Chances of Moderate rain on 18, 19 Dec & light rain during 20, 21, 22 Dec. Maximum temperature would be in the range of 30°C to 31°C and the minimum temperature would be between 22°C - 23°C. Generally cloudy sky will appear for the next five days. Wind is expected with the speed of 3-4 Kmph from, South & Southeast directions.
--------------	---

General Advisory:

Extended range Forecast for next week (20th to 26th December 2024):

Rainfall:

As per extended range predictions, there is possibility of near normal to slightly above normal rainfall likely over the district during 20th to 26th December 2024.

Maximum Temperature:

Maximum temperatures are likely to be slightly above normal and are likely to be in the range 26°C to 32°C over the plains of the district during next week. 20th to 26th December 2024

Minimum Temperature:

Minimum temperatures are likely to be slightly above normal and are likely to be in the range 20°C to 24°C over the district during next week 20th to 26th December 2024.

Due to the recent rains, the farmers should immediately remove the excess rainwater accumulated in the paddy fields and the lands where vegetable and horticultural crops are cultivated.

Weather Based Agro-Advisories: (Chilly, Paddy & Animal Husbandry)

Chilly:

The occurrence of Fusarium wilt was noticed in Chilly. Fusarium wilt is characterized by wilting of the Chilly plant, upward and inward rolling of the leaves and leaves turn yellow and die.

Generally, appear in localized areas of the field, where a high percentage of the plants wilt and die, although scattered wilted plants may also occur.

To avoid this, use wilt-resistant varieties. Seed treatment with 4gm Trichoderma viride formulation per kg seed is more effective.

Mix 2kg Trichoderma viride with 50kg FYM, sprinkle water and cover with a thin polythene sheet.

When mycelia growth is visible on the heap after 15 days, apply the mixture in rows of chilly plants in an area of one acre.

Or to control by chemical method, spray Azoxystrobin 18.2% + Difenconazole 11.4% SC @ 25ml per 10 litres of water.

Paddy:

Farmers are advised to provide adequate drainage facilities in the fields to drain the rain water. Once the water is drained, spray 1% urea, 2% DAP and 1% KCl as a foliar application.

Animal Husbandry:

Due to the prevailing cold weather conditions, cattle rearers are advised to allow the cattle to graze only after 2 hours of sunrise.

Cover the cow shed with gunny bags, and keep the floor in dry condition.

Dry fodder and greens should be fed without moisture to avoid fungal infection.

Sivagangai

SMS Advisory	Chances of Moderate rain during 18, 19, 20 Dec & light rain on 21, 22 Dec. Maximum temperature would be in the range of 30°C to 31°C and the minimum temperature would be between 21°C - 22°C. Generally cloudy sky will appear for the next five days. Wind is expected with the speed of 8-10 Kmph from, East & Northeast directions.
--------------	---

General Advisory:

Extended range Forecast for next week (20th to 26th December 2024):

Rainfall:

As per extended range predictions, there is possibility of near normal to slightly above normal rainfall likely over the district during 20th to 26th December 2024.

Maximum Temperature:

Maximum temperatures are likely to be slightly above normal and are likely to be in the range 26°C to 32°C over the plains of the district during next week. 20th to 26th December 2024

Minimum Temperature:

Minimum temperatures are likely to be slightly above normal and are likely to be in the range 16°C to 20°C over the district during next week 20th to 26th December 2024.

Due to the recent rains, the farmers should immediately remove the excess rainwater accumulated in the paddy fields and the lands where vegetable and horticultural crops are cultivated.

Weather Based Agro-Advisories: (Tomato, Mango & Animal Husbandry)

Tomato

The incidence of Septoria Leaf Spot disease is noticed in Tomato. The plant may be attacked at any stage of its growth.

The disease is characterized by numerous, small, grey, circular leaf spots having a dark border. Remove and destroy the affected plant parts.

To control the disease effectively Spray Copper-oxchloride @ 350gm per acre in the field.

Mango:

Mango cultivating farmers are advised to adopt the following methods to plant the grafted Mango plants.

Dig pits of 1 metre x 1 metre x 1-metre size .

Mix 10 kg of FYM per pit with top soil and fill it up to 3/4th of the pit.

Plant the grafts at the centre of the pit.

Water the plants immediately after planting.

Animal Husbandry:

Due to the prevailing cold weather conditions, cattle rearers are advised to allow the cattle to graze only after 2 hours of sunrise.

Cover the cow shed with gunny bags, and keep the floor in dry condition.

Dry fodder and greens should be fed without moisture to avoid fungal infection.

Theni

SMS Advisory	Chances of Moderate rain on 18, 20 Dec & light rain during 19, 21, 22 Dec. Maximum temperature would be in the range of 29°C to 30°C and the minimum temperature would be between 20°C - 21°C. Generally cloudy sky will appear for the next five days. Wind is expected with the speed of 8-10 Kmph from, East & Northeast directions.
--------------	---

General Advisory:

Extended range Forecast for next week (20th to 26th December 2024):

Rainfall:

As per extended range predictions, there is possibility of near normal to slightly above normal rainfall likely over the district during 20th to 26th December 2024.

Maximum Temperature:

Maximum temperatures are likely to be slightly above normal and are likely to be in the range 26°C to 32°C over the plains of the district during next week. 20th to 26th December 2024

Minimum Temperature:

Minimum temperatures are likely to be slightly above normal and are likely to be in the range 16°C to 20°C over the district during next week 20th to 26th December 2024.

Due to the recent rains, the farmers should immediately remove the excess rainwater accumulated in the paddy fields and the lands where vegetable and horticultural crops are cultivated.

Weather Based Agro-Advisories: (Jasmine, Grapes & Animal Husbandry)

Jasmine:

Due to the prevailing wet weather conditions, the incense of flower Thrips are seen in Jasmine, the symptoms are pale yellow or brown colour lines seen on the flower petals.

To control this, a foliar spray of 10gms of *Beaveria Bassiana*, 10gms of *Metarhizium* and 10gms of *Verticellium* per litre of water is recommended.

To control the reproduction of these lice, mix the albumen of 2 eggs with 250ml of Neem oil, 250ml of Beech seed oil and 250ml of Mahua seed oil, take 15ml of the oil extract per litre of water and spray it.

Grapes:

The prevailing low temperature is favourable for the incidence of Powdery mildew in Grapes crops. Hence, farmers are advised to visit the field and monitor the crop carefully.

To control this disease, spray 0.3% wettable sulphur or Dust Sulphur @ 6 to 12 kg per hectare in the morning hours.

Plant protection activities can be done only on non-rainy days.

Animal Husbandry:

Due to the prevailing cold weather conditions, cattle rearers are advised to allow the cattle to graze only after 2 hours of sunrise.

Cover the cow shed with gunny bags, and keep the floor in dry condition.

Dry fodder and greens should be fed without moisture to avoid fungal infection.

Virudhunagar

Crop	Stage	Agromet Advisory
Irrigated crops	Water management	Farmers are advised to postpone the irrigation based on the crop requirement.
Rainfed & irrigated crops	Rainfall	To prevent crop damage from continuous rainfall, farmers are advised to ensure proper drainage systems to avoid water stagnation in the fields.
Rainfed crops	Rainfall	Postpone spraying; however, it may be practiced based on local weather conditions.
Maize	Cob formation stage	Continuous rainfall and wind may affect the crop stand; hence farmers are requested to practice earth up and form new ridges to provide additional anchorage to the plants.
Cotton	Square formation to Boll bursting stage	Crop residue mulching may be done to reduce the soil erosion. Precaution may be taken to avoid water stagnation in the field.
Paddy	Vegetative stage	Maintain an appropriate water level to prevent crop damage. Warm, moist weather, short day length, low temperature favours stem borer. To control spray Azadirachtin 0.03% @1000 ml/ha (or) Chlorantraniliprole 18.5% SC @150 ml.
	Panicle initiation stage	Maintain the water level to avoid crop damage and application of fertilizer based on the local weather.
Chilli	Flowering stage	Ensure proper drainage systems to avoid water stagnation. Avoid spraying and provide drainage facilities to avoid damping off infection. If symptoms persist soil drenching with copper oxychloride @2.5g/lit. may be practiced.
Onion		Continuous rain or high-intensity rainfall leads to waterlogged conditions, which can result in soft rot and basal rot. To manage this, practice soil trenching with copper hydroxide @ 2.5 g per liter of water.
Live stock	Shelter0020	Ensure the stability of animal shed structures and avoid stagnation of water around the shed. Provide adequate drinking water as the humidity is very high.
Human	Rainfall	The public is requested to carry umbrellas or raincoats and take preventive measures against the cold.

Rain: 18-22.12-8,10,4,5&4 mm. Ensure proper drainage. Onion- soft rot and basal rot- soil trenching with Copper hydroxide @ 2.5 g per liter of water.

Tirunelveli

Crop	Stage	Agromet Advisory
Irrigated crops	Water management	Farmers are advised to postpone the irrigation based on the crop requirement.
Rainfed crops	Rainfall	To prevent crop damage from continuous rainfall, farmers are advised to ensure proper drainage systems to avoid water stagnation in the fields.
Rainfed & irrigated crops	Rainfall	Postpone spraying; however, it may be practiced based on local weather conditions.

Paddy	Vegetative	Maintain the water level to avoid crop damage and application of fertilizer based on the local weather.
	Transplanting	Maintain the water level and ensure strong bunds to prevent crop lodging
Sugarcane	All the stages	Continuous rainfall may lodge the crop; hence, farmers are advised to provide support by propping and to practice earthing up.
Live stock	Shelter	Ensure the stability of animal shed structures and avoid stagnation of water around the shed. Provide adequate drinking water as the humidity is very high.
Human	Rainfall	The public is requested to carry umbrellas or raincoats and take preventive measures against the cold.

SMS: Rain: 18-22.12-10,5,4,4&4 mm. Ensure proper drainage. Paddy – Avoid lodging-Maintain the water level and ensure strong bunds. Sugarcane- practice propping.

Thoothukudi

Crop	Stage	Agromet Advisory
Irrigated crops	Water management	Farmers are advised to postpone the irrigation based on the crop requirement.
Rainfed crops	Rainfall	To prevent crop damage from continuous rainfall, farmers are advised to ensure proper drainage systems to avoid water stagnation in the fields.
Rainfed & irrigated crops	Rainfall	Postpone spraying; however, it may be practiced based on local weather conditions.
Pulses	Flowering stage	Precaution may be taken to avoid water stagnation in the field. Postpone spraying; however, it may be practiced based on local weather conditions. Due to water stagnation, yellowing of leaves is noticed. Hence, foliar spray of 2% DAP + 1% KCl (MOP) or TNAU pulse wonder @ 2 kg / acre may be given.
	pod formation stage	Precaution may be taken to avoid water stagnation in the field. Postpone spraying; however, it may be practiced based on local weather conditions.
	Maturity stage	Harvest the pods immediately and store it safely to prevent fungal spread.
Sorghum	Panicle initiation phase	Continuous rainfall may affect the crop stand; hence farmers are requested to practice earth up and form new ridges to provide additional anchorage to the plants.
Maize	silking to cob filling stage	
Paddy	Vegetative stage	Maintain the water level to avoid crop damage and avoid application of fertilizer.
	Transplanting stage	Maintain the water level and ensure strong bunds to prevent crop lodging.
Chilli	Flowering stage	Ensure proper drainage systems to avoid water stagnation Avoid spraying and provide drainage facilities to avoid damping off infection. If symptoms persist soil drenching with copper oxychloride 2.5g/lit. may be practiced.
Cotton	Flowering & square formation stage	Crop residue mulching may be done to reduce the soil erosion. Precaution may be taken to avoid water stagnation in the field. Immediate action for earth up and form new ridges to avoid lodging of crop due to continuous rainfall.
Banana	Bunch Development stage	High wind speeds may damage the physical appearance of the crop. Hence, farmers are advised to practice propping. Earthing up should be practiced to avoid lodging
Live stock	Shelter	Ensure the stability of animal shed structures and avoid stagnation of water around the shed. Provide adequate drinking water as the humidity is very high.

	Disease forecast for the month of December	Bluetongue -high risk- Preventive Measures: Vector control using insecticides and good water management. Restriction in animal movement, segregation of affected animals and symptomatic treatment. Strict bio security measures. Peste des petits ruminants- Very high risk- Preventive Measures: Vaccination of susceptible animals of above 3 months old age. Restriction on animal movement, strict biosecurity measures and proper disposal of carcass.
Human	Rainfall	The public is requested to carry umbrellas or raincoats and take preventive measures against the cold.

SMS: Rain:18-22.12-10,10,4,4&4mm. Ensure proper drainage. Pulses-pods may be harvested immediately and kept safe. Maize, Sorghum, Cotton- practice earthing up to avoid lodging

TENKASI

Crop	Stage	Agromet Advisory
Irrigated crops	Water management	Farmers are advised to postpone the irrigation based on the crop requirement.
Rainfed crops	Rainfall	To prevent crop damage from continuous rainfall, farmers are advised to ensure proper drainage systems to avoid water stagnation in the fields.
Rainfed & irrigated crops	Rainfall	Postpone spraying; however, it may be practiced based on local weather conditions.
Paddy	Vegetative	Maintain the water level to avoid crop damage and application of fertilizer based on the local weather.
	Transplanting	Maintain the water level and ensure strong bunds to prevent crop lodging
Sugarcane	All the stages	Continuous rainfall may lodge the crop; hence, farmers are advised to provide support by propping and to practice earthing up.
Live stock	Shelter	Ensure the stability of animal shed structures and avoid stagnation of water around the shed. Provide adequate drinking water as the humidity is very high.
Human	Rainfall	The public is requested to carry umbrellas or raincoats and take preventive measures against the cold.

SMS: Rain: 18-22.12-15,5,4,4&4 mm. Ensure proper drainage. Paddy – Avoid lodging-Maintain the water level and ensure strong bunds.

Kanyakumari

AGRO ADVISORIES

S. N.	CROP	STAGES	ADVISORIES
1.	Fruit trees and Tree spices	All stages	Strengthening the basins may be taken up for better harvesting of rains.
2.	Coconut (burial of husk)	All stage	Husk burial can be done in coconut basins or in the interspaces to preserve rain water.

3.	Banana	Bunching	Wind speed is anticipated and so it is advised to provide mechanical support to banana to avoid lodging.
4.	Horticultural crops	All stages	Application of fertilizers and spraying of chemicals should be avoided due to rain.
5.	Tree spices	Vegetative stages	Avoid moisture loss by the application of mulching in tree spices field through farm waste materials.
6.	Horticultural crops.	All stages	Basins can be formed for all tree crops and coir compost should be applied to conserve moisture in banana, pepper, clove, nutmeg, cinnamon and coconut.

SMS Advisory

Banana: Use transparent polythene sleeves (2%) to cover the bunches due to rainfall. It increases the quality of bunches.

Salem

WEATHER ADVISORY BULLETIN FOR LIVESTOCK, POULTRY AND AGRICULTURE

Livestock, Poultry & Crop	Stage	Weather advisory
Livestock	General	<p><u>Lumpy Skin Disease (LSD)</u> Frequent rains, wind speed, humidity and temperature are favourable for the breeding of mosquitoes and flies that attack livestock. In such an environment, Lumpy Skin Disease (LSD), an infectious viral disease of cattle and buffaloes can easily spread to other cattle when mosquitoes, biting flies and ticks bite the infected cows. Affected cows develop a mild fever for 2-3 days, followed by development of stiff, round cutaneous nodules under the skin all over the body. Symptoms may include lesions in mouth, pharynx and respiratory tract, emaciation, enlarged lymph nodes, oedema of limbs, reduction in milk production, abortion, infertility and sometimes, death. Although infected animals often recover within a period of 2-3 weeks, there is reduction in milk yield in lactating cattle for several weeks.</p> <p><u>Prevention and Control</u> Efforts should be made to reduce the vector population in affected areas. Ensure strict control of animal movement to affected areas. In case of purchasing new cows from shandies, they should be checked for signs of disease. After purchase, keep the cows in isolation for a certain period and then include them in the herd. Immediately isolate the sick / infected animals from the healthy animals. Thorough cleaning and disinfection of affected personnel, premises and contaminated environment including vehicles should be carried out with appropriate chemicals/disinfectants like lysol (2%) and hypochlorite (2–3%).</p>

		Affected animals should be treated immediately after the onset of symptoms without any delay with qualified veterinary doctor.
Agro advisory from Krishi Vigyan Kendra, Namakkal		
Turmeric	Rhizome formation stage	Turmeric farmers are requested to apply 200 kg of well decomposed farm yard manure along with 5 kg of Azospirillum, Phosphobacteria and <i>Trichoderma viride</i> each by using current rainfall for an acre of land to prevent rhizome rot and to improve the crop growth.
Paddy	Sowing Stage	Due to surplus rain during the monsoon, it is advisable to undertake direct sown paddy cultivation instead of transplantation from nursery to avoid wastage of time. Hence, farmers are advised to use drum feeder for sowing paddy seeds in the field at the rate of 10 kg for 1 acre of land.
Small Onion	Vegetative stage	Small onion growers are requested to apply each 4 kg of <i>Trichoderma viride</i> , <i>Bacillus subtilis</i> and VAM along with 200 kg of FYM in the root region of onion plant for an acre of land at 20 days interval up to 2 months after planting to improve the plant growth and prevent the basal rot / bulb rot incidence in onion.

Namakkal

WEATHER ADVISORY BULLETIN FOR LIVESTOCK, POULTRY AND AGRICULTURE

Livestock, Poultry & Crop	Stage	Weather advisory
Livestock	General	<p><u>Lumpy Skin Disease (LSD)</u> Frequent rains, wind speed, humidity and temperature are favourable for the breeding of mosquitoes and flies that attack livestock. In such an environment, Lumpy Skin Disease (LSD), an infectious viral disease of cattle and buffaloes can easily spread to other cattle when mosquitoes, biting flies and ticks bite the infected cows. Affected cows develop a mild fever for 2-3 days, followed by development of stiff, round cutaneous nodules under the skin all over the body. Symptoms may include lesions in mouth, pharynx and respiratory tract, emaciation, enlarged lymph nodes, oedema of limbs, reduction in milk production, abortion, infertility and sometimes, death. Although infected animals often recover within a period of 2-3 weeks, there is reduction in milk yield in lactating cattle for several weeks.</p> <p><u>Prevention and Control</u> Efforts should be made to reduce the vector population in affected areas. Ensure strict control of animal movement to affected areas. In case of purchasing new cows from shandies, they should be checked for signs of disease. After purchase, keep the cows in isolation for a certain period and then include them in the herd. Immediately isolate the sick / infected animals from the healthy animals. Thorough cleaning and disinfection of affected personnel, premises and contaminated environment including vehicles should be carried out with appropriate chemicals/disinfectants like lysol (2%) and hypochlorite (2–3%). Affected animals should be treated immediately after the onset of symptoms without any delay with qualified veterinary doctor.</p>

Agro advisory from Krishi Vigyan Kendra, Namakkal		
Turmeric	Rhizome formation stage	Turmeric farmers are requested to apply 200 kg of well decomposed farm yard manure along with 5 kg of Azospirillum, Phosphobacteria and <i>Trichoderma viride</i> each by using current rainfall for an acre of land to prevent rhizome rot and to improve the crop growth.
Paddy	Sowing Stage	Due to surplus rain during the monsoon, it is advisable to undertake direct sown paddy cultivation instead of transplantation from nursery to avoid wastage of time. Hence, farmers are advised to use drum feeder for sowing paddy seeds in the field at the rate of 10 kg for 1 acre of land.
Small Onion	Vegetative stage	Small onion growers are requested to apply each 4 kg of <i>Trichoderma viride</i> , <i>Bacillus subtilis</i> and VAM along with 200 kg of FYM in the root region of onion plant for an acre of land at 20 days interval up to 2 months after planting to improve the plant growth and prevent the basal rot / bulb rot incidence in onion.

Dharmapuri

WEATHER ADVISORY BULLETIN FOR LIVESTOCK, POULTRY AND AGRICULTURE

Livestock, Poultry & Crop	Stage	Weather advisory
Livestock	General	<p><u>Lumpy Skin Disease (LSD)</u> Frequent rains, wind speed, humidity and temperature are favourable for the breeding of mosquitoes and flies that attack livestock. In such an environment, Lumpy Skin Disease (LSD), an infectious viral disease of cattle and buffaloes can easily spread to other cattle when mosquitoes, biting flies and ticks bite the infected cows. Affected cows develop a mild fever for 2-3 days, followed by development of stiff, round cutaneous nodules under the skin all over the body. Symptoms may include lesions in mouth, pharynx and respiratory tract, emaciation, enlarged lymph nodes, oedema of limbs, reduction in milk production, abortion, infertility and sometimes, death. Although infected animals often recover within a period of 2-3 weeks, there is reduction in milk yield in lactating cattle for several weeks.</p> <p><u>Prevention and Control</u> Efforts should be made to reduce the vector population in affected areas. Ensure strict control of animal movement to affected areas. In case of purchasing new cows from shandies, they should be checked for signs of disease. After purchase, keep the cows in isolation for a certain period and then include them in the herd. Immediately isolate the sick / infected animals from the healthy animals. Thorough cleaning and disinfection of affected personnel, premises and contaminated environment including vehicles should be carried out with appropriate chemicals/disinfectants like lysol (2%) and hypochlorite (2–3%). Affected animals should be treated immediately after the onset of symptoms without any delay with qualified veterinary doctor.</p>

Agro advisory from Krishi Vigyan Kendra, Namakkal

Turmeric	Rhizome formation stage	Turmeric farmers are requested to apply 200 kg of well decomposed farm yard manure along with 5 kg of Azospirillum, Phosphobacteria and <i>Trichoderma viride</i> each by using current rainfall for an acre of land to prevent rhizome rot and to improve the crop
----------	-------------------------	---

		growth.
Paddy	Sowing Stage	Due to surplus rain during the monsoon, it is advisable to undertake direct sown paddy cultivation instead of transplantation from nursery to avoid wastage of time. Hence, farmers are advised to use drum feeder for sowing paddy seeds in the field at the rate of 10 kg for 1 acre of land.
Small Onion	Vegetative stage	Small onion growers are requested to apply each 4 kg of <i>Trichoderma viride</i> , <i>Bacillus subtilis</i> and VAM along with 200 kg of FYM in the root region of onion plant for an acre of land at 20 days interval up to 2 months after planting to improve the plant growth and prevent the basal rot / bulb rot incidence in onion.

Krishnagiri

WEATHER ADVISORY BULLETIN FOR LIVESTOCK, POULTRY AND AGRICULTURE

Livestock, Poultry & Crop	Stage	Weather advisory
Livestock	General	<p><u>Lumpy Skin Disease (LSD)</u> Frequent rains, wind speed, humidity and temperature are favourable for the breeding of mosquitoes and flies that attack livestock. In such an environment, Lumpy Skin Disease (LSD), an infectious viral disease of cattle and buffaloes can easily spread to other cattle when mosquitoes, biting flies and ticks bite the infected cows. Affected cows develop a mild fever for 2-3 days, followed by development of stiff, round cutaneous nodules under the skin all over the body. Symptoms may include lesions in mouth, pharynx and respiratory tract, emaciation, enlarged lymph nodes, oedema of limbs, reduction in milk production, abortion, infertility and sometimes, death. Although infected animals often recover within a period of 2-3 weeks, there is reduction in milk yield in lactating cattle for several weeks.</p> <p><u>Prevention and Control</u> Efforts should be made to reduce the vector population in affected areas. Ensure strict control of animal movement to affected areas. In case of purchasing new cows from shandies, they should be checked for signs of disease. After purchase, keep the cows in isolation for a certain period and then include them in the herd. Immediately isolate the sick / infected animals from the healthy animals. Thorough cleaning and disinfection of affected personnel, premises and contaminated environment including vehicles should be carried out with appropriate chemicals/disinfectants like lysol (2%) and hypochlorite (2–3%). Affected animals should be treated immediately after the onset of symptoms without any delay with qualified veterinary doctor.</p>
Agro advisory from Krishi Vigyan Kendra, Namakkal		
Turmeric	Rhizome formation stage	Turmeric farmers are requested to apply 200 kg of well decomposed farm yard manure along with 5 kg of Azospirillum, Phosphobacteria and <i>Trichoderma viride</i> each by using current rainfall for an acre of land to prevent rhizome rot and to improve the crop growth.
Paddy	Sowing Stage	Due to surplus rain during the monsoon, it is advisable to undertake direct sown paddy cultivation instead of transplantation from nursery to avoid wastage of time. Hence,

		farmers are advised to use drum feeder for sowing paddy seeds in the field at the rate of 10 kg for 1 acre of land.
Small Onion	Vegetative stage	Small onion growers are requested to apply each 4 kg of <i>Trichoderma viride</i> , <i>Bacillus subtilis</i> and VAM along with 200 kg of FYM in the root region of onion plant for an acre of land at 20 days interval up to 2 months after planting to improve the plant growth and prevent the basal rot / bulb rot incidence in onion.

Karaikal and Puducherry

Agro Advisory

Crop	Stage/Particulars	Agromet Advisory
Rice	Active tillering	<p>Drain the excess water from the paddy fields leaving a thin film of water.</p> <p>In paddy fields thinning of tillers may be done and utilized to gap fill the damaged areas.</p> <p>Foliar spray of 1% urea along with 0.5 % ZnSO₄ (5 kg urea +2.5 kg ZnSO₄ in 500 litres of water /ha) may be given.</p> <p>In paddy, after one week of foliar spray top dressing of 50 kg urea and 20 kg potash along with 10 kg of neem cake per hectare may be done.</p>

SMS: Provide adequate drainage facilities to all crops as light to moderate rain is expected for next five days.

