

तमिलनाडु के लिए राज्य स्तरीय समग्र कृषि-मौसम परामर्श
बुलेटिन



**State Composite Agro-meteorological Advisory
Bulletin for Tamil Nadu and Puducherry
Bulletin No. 043/2024**

For the period 0830 IST, 28th May 2024 to

0830 IST, 02nd June 2024

Issued on Tuesday, 28th May 2024

Issued by

DDGM, Regional Meteorological Centre, India Meteorological Department,
Chennai in collaboration with TNAU and nine AMFU's of Agro climatic Zones of
the Tamil Nadu state

Agro climatic zones of the state

| Sl. No | Agro climatic zone | Districts | Agro met field Unit (AMFU) location |
|--------|--------------------|---|-------------------------------------|
| 1 | Northeastern zone | Kanchipuram, Tiruvallur, Cuddalore Tiruvannamalai, Chennai, Villupuram , Vellore | Chennai |
| 2 | Northwestern zone | Dharmapuri, Krishnagiri, Salem and Namakkal | Namakkal |
| 3 | Western Zone | Erode, Tiruppur and Coimbatore, | Coimbatore, |
| 4 | Cauvery Delta zone | Thanjavur, Nagapattinam, Tiruvarur, Karur, Perambalur, Ariyalur and Tiruchirapalli. | Adudurai |
| 5 | Southern zone | Virudhunagar, Tirunelveli and Thoothukudi | Kovilpatti |
| 6 | South Zone | Pudukkottai, Madurai, Dindigul, Theni, Ramanathapuram and Sivagangai | Kannivadi |
| 7 | High rainfall zone | Kanyakumari | Pechiparai |
| 8 | Hilly zone | Nilgiris | Ooty |
| 9 | Coastal Zone | Karaikal and Pondicherry | Karaikal |



Past Weather Summary for the period 24.05.24 to 27.05.24 for the State of Tamilnadu & Puducherry

Temperature:

Maximum Temperature of range 28°C – 41°C prevailed over the state. Kodaikanal and Uthagamandalam recorded Maximum temperature range 17°C – 21°C during the period.

Minimum temperature of range 23°C - 31°C prevailed over the State. Kodaikanal and Uthagamandalam recorded Minimum temperature of range 13°C - 14°C during the same period.

Spatial distribution of Rainfall

| Spatial distribution of Rainfall | Tamil Nadu | Puducherry |
|----------------------------------|-------------------------|--------------------------|
| Widespread (Most places) | -- | -- |
| Fairly widespread (Many places) | -- | -- |
| Scattered (Few Places) | 24.05.2024 & 25.05.2024 | -- |
| Isolated (One or Two Places) | 26.05.2024 & 27.05.2024 | -- |
| Dry | -- | 24.05.2024 to 27.05.2024 |

Chief Amounts of Rainfall (in cms):-

24.05.24 : Nalumukku (dist Tirunelveli) 10, Oothu (dist Tirunelveli), Pechiparai (dist Kanniyakumari) 8 each, Kinnakorai (dist The Nilgiris), Kakkachi (dist Tirunelveli) 7 each, Upper Bhavani (dist The Nilgiris), Tindivanam (dist Villupuram), Adayamadai (dist Kanniyakumari) 6 each, Went Worth Estate (dist The Nilgiris), Chittar-I (dist Kanniyakumari), Perunchani Dam (dist Kanniyakumari), Puthan Dam (dist Kanniyakumari), Balamore (dist Kanniyakumari), Taluk Office Pandalur (dist The Nilgiris), Mambzhathuraiyaru (dist Kanniyakumari), Papanasam (dist Tirunelveli), Anaikedanku (dist Kanniyakumari), Suralacode (dist Kanniyakumari), Glenmorgan (dist The Nilgiris), Geddai (dist The Nilgiris), Sivalogam (Chittar II) (dist Kanniyakumari) 5 each, Manjolai (dist Tirunelveli), Tirupathur (dist Sivagangai), Mullanginavillai (dist Kanniyakumari), Thirparappu (dist Kanniyakumari), Coonoor (dist The Nilgiris), Kottaram (dist Kanniyakumari), Maniyachi (dist Thoothukudi), Mylaudy (dist Kanniyakumari), Nagercoil (dist Kanniyakumari) 4 each, Ottapadiram (dist Thoothukudi), Kurunthancode (dist Kanniyakumari), Kunda Bridge (dist The Nilgiris), Avalanche (dist The Nilgiris), Kozhiporvilai (dist Kanniyakumari), Colachel (dist Kanniyakumari), Thuckalay (dist Kanniyakumari), Servalar Dam (dist Tirunelveli), Emeralad (dist The Nilgiris), Kannimar (dist Kanniyakumari), Gudalur Bazar (dist The Nilgiris), SCS Mill Arasoor (dist Villupuram), Kunderipallam (dist Erode), Ketti (dist The Nilgiris), Eraniel (dist Kanniyakumari), Wood Braiyar Estate (dist The Nilgiris), Upper Gudalur (dist The Nilgiris), Nagercoil ARG (dist Kanniyakumari) 3 each, Barwood (dist The Nilgiris), Bhoothapandy (dist Kanniyakumari),

Thirupathisaram AWS (dist Kanniyakumari), Kodumudiyaru Dam (dist Tirunelveli), Harisan Malayalam Ltd. (dist The Nilgiris), Mukkadal Dam (dist Kanniyakumari), BASL Vengur (dist Kallakurichi), Kariyakovil Dam (dist Salem), Chamraj Estate (dist The Nilgiris), Elanthakuttai Medu (dist Erode), BASL Mugaiyur (dist Villupuram), Bhavanisagar (dist Erode), Pillur Dam Mettupalayam (dist Coimbatore), Naduvattam (dist The Nilgiris), Uthagamandalam (dist The Nilgiris), Kallaty (dist The Nilgiris), Uppar Dam (dist Tiruppur), Thenkasi (dist Tenkasi), Adavinainnarkoil Dam (dist Tenkasi), Cincona (dist Coimbatore), Valparai PTO (dist Coimbatore), Singampunari (dist Sivagangai), Kanniyakumari (dist Kanniyakumari), Kil Kotagiri Estate (dist The Nilgiris), Gadana Dam (dist Tenkasi), Kannadaian Anicut (dist Tirunelveli), Aralvaimozhi (dist Kanniyakumari), BASL Manampoondi (dist Villupuram), Kodanad (dist The Nilgiris), Sathyamangalam (dist Erode), Valparai Taluk Office (dist Coimbatore), Sular (dist Coimbatore), Chinnakalar (dist Coimbatore), Siruvani Adivaram (Water Treatment Plant) (dist Coimbatore) 2 each, Kodivery (dist Erode), Billimalai Estate (dist The Nilgiris), Kodiayakarai (dist Nagapattinam), Adar Estate (dist The Nilgiris), Kalial (dist Kanniyakumari), Coonoor PTO (dist The Nilgiris), Tirukoilur (dist Kallakurichi), Ayikudi (dist Tenkasi), Sholayar (dist Coimbatore), Palladam (dist Tiruppur), Kuzhithurai (dist Kanniyakumari), Kalakadu (dist Tirunelveli), Devala (dist The Nilgiris), Alakarai Estate (dist The Nilgiris), Coimbatore South (dist Coimbatore), Periyanaickenpalayam (dist Coimbatore), Tirumayam (dist Pudukkottai), Gobichettipalayam (dist Erode), Tiruppur North Taluk Office (dist Tiruppur), Radhapuram (dist Tirunelveli), Burliar (dist The Nilgiris), Ramanadhi Dam Section (dist Tenkasi), Vilupuram (dist Villupuram), Manimutharu (dist Tirunelveli), Kodaikanal (dist Dindigul), SCS Mill Thiruvannainal (dist Villupuram), Madukkarai Taluk Office (dist Coimbatore), Valparai PAP (dist Coimbatore), Azhiyar (dist Coimbatore), Natham (dist Dindigul), Avudayarkoil (dist Pudukkottai), Kothagiri (dist The Nilgiris), TNAU Coimbatore (dist Coimbatore), RSCL-2 Nemoor (dist Villupuram), Kodaikanal boat club (dist Dindigul), Thirukoilur ARG (dist Kallakurichi), UPASI_Tea-Research-Foundation AWS (dist Coimbatore) 1 each

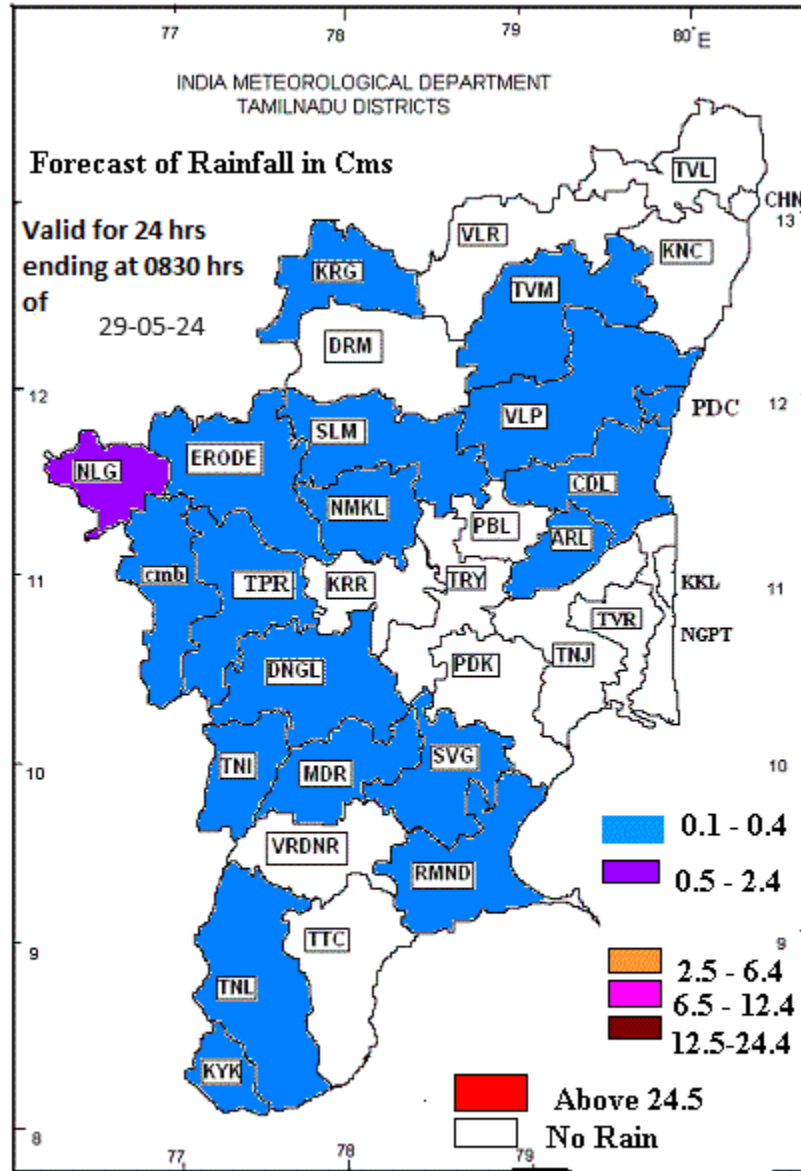
25.05.24 : Mylaudy (dist Kanniyakumari) 10, Mambzhathuraiyaru (dist Kanniyakumari) 9, Anaikedanku (dist Kanniyakumari), Balamore (dist Kanniyakumari), Thuckalay (dist Kanniyakumari), Periyar (dist Theni) 8 each, Kottaram (dist Kanniyakumari), Nalumukku (dist Tirunelveli), Nagercoil (dist Kanniyakumari), Perunchani Dam (dist Kanniyakumari), Oothu (dist Tirunelveli), Puthan Dam (dist Kanniyakumari), Suralacode (dist Kanniyakumari) 7 each, Mullanginavillai (dist Kanniyakumari) 6, Kalial (dist Kanniyakumari), Adayamadai (dist Kanniyakumari), Pechiparai (dist Kanniyakumari), Sivalogam (Chittar II) (dist Kanniyakumari), Chittar-I (dist Kanniyakumari), Bhoothapandy (dist Kanniyakumari), Colachel (dist Kanniyakumari), Kakkachi (dist Tirunelveli), Thirupathisaram AWS (dist Kanniyakumari), Kurunthancode (dist Kanniyakumari), Papanasam (dist Tirunelveli) 5 each, Kuzhithurai (dist Kanniyakumari), Valparai PTO (dist Coimbatore), Kannimar (dist Kanniyakumari), Kodumudiyaru Dam (dist Tirunelveli), Mukkadal Dam (dist Kanniyakumari), Valparai PAP (dist Coimbatore) 4 each, Adavinainnarkoil Dam (dist Tenkasi), Kanniyakumari (dist Kanniyakumari), Sivagiri (dist Tenkasi), Devakottai (dist Sivagangai), Thekkadi (dist Theni), Chinnakalar (dist Coimbatore), Karuppanadhi Dam (dist Tenkasi), Paramathivelur (dist Namakkal), Ambasamudram (dist Tirunelveli), Thenkasi (dist Tenkasi), Servalar Dam (dist Tirunelveli), Manjolai (dist Tirunelveli), Manimutharu (dist Tirunelveli), UPASI_Tea-Research-Foundation AWS (dist Coimbatore) 3 each, Cincona (dist Coimbatore), Eraniel (dist Kanniyakumari), Nambiyar Dam (dist Tirunelveli), Thirparappu (dist Kanniyakumari), Kannadaian Anicut (dist Tirunelveli), K. Paramathi (dist Karur), Aralvaimozhi (dist Kanniyakumari), Gundar Dam (dist Tenkasi), Sholayar (dist Coimbatore), Karur (dist Karur), Anaippalayam (dist Karur), Valparai Taluk Office (dist Coimbatore), Kozhiporvilai (dist Kanniyakumari), Aravakurichi (dist Karur), Namakkal (dist Namakkal), Sankarankoil (dist Tenkasi), Radhapuram (dist Tirunelveli), Ayikudi (dist Tenkasi), Sethu_Baskar_Agri_College AWS (dist Sivaganga), Tenkasi AWS (dist Tenkasi) 2 each, Ramanadhi Dam Section (dist Tenkasi), Shencottah (dist Tenkasi), Nanguneri (dist Tirunelveli), Puduchatram (dist

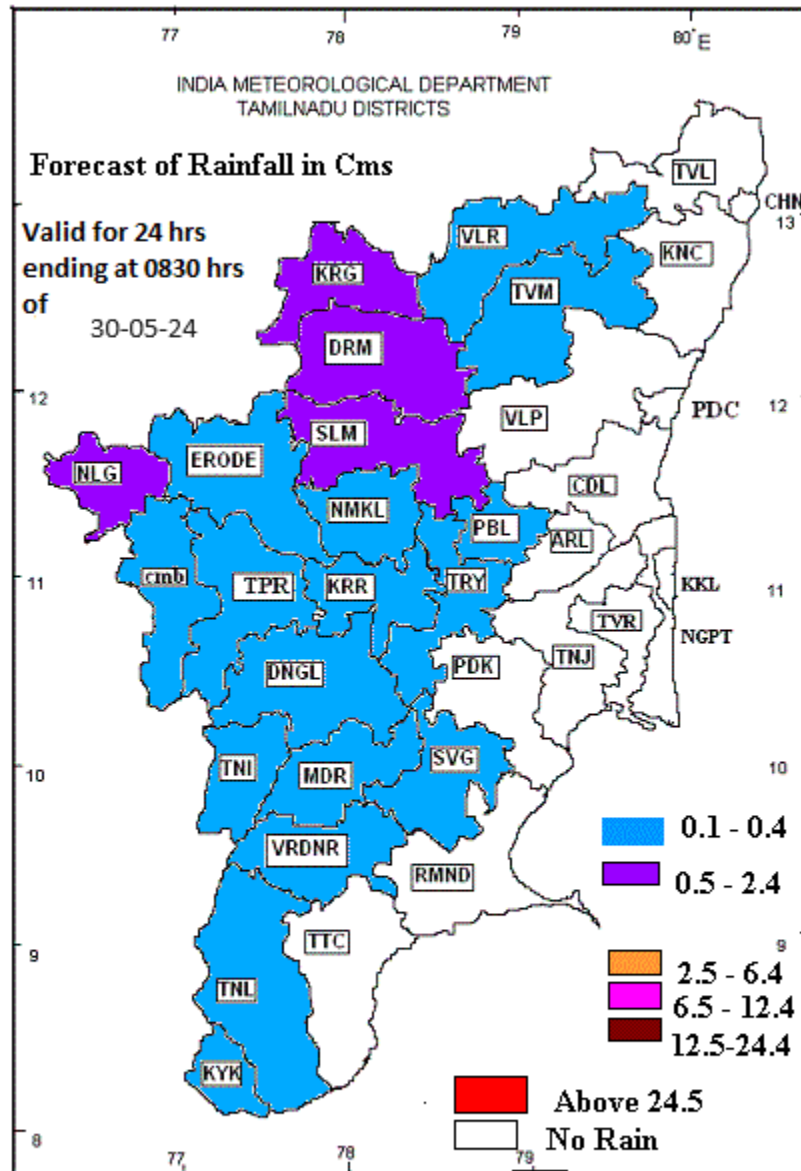
Namakkal), Attur (dist Salem), Palayamkottai (distTirunelveli), Arantangi (dist Pudukkottai), Azhiyar (dist Coimbatore), Gudalur (distTheni), Sivagangai PWD TB (dist Sivagangai), Rasipuram (dist Namakkal), Mayanur(dist Karur), Illayangudi (dist Sivagangai), Kadambur (dist Thoothukudi), Kodaikanal(dist Dindigul), Sendamangalam (dist Namakkal), Kariyapatti (dist Virudhunagar),Pollachi (dist Coimbatore), Cheranmahadevi (dist Tirunelveli), Bodinaickanur (distTheni), Koppampatti (dist Thiruchirappalli), Karaikudi (dist Sivagangai), Emeralad (distThe Nilgiris), Sivaganga (dist Sivagangai), Vattamalai Reservoir (dist Tiruppur),Kalakadu (dist Tirunelveli), Kilanilai (dist Pudukkottai), Avudayarkoil (distPudukkottai), Pilavakkal_Periyar Dam (dist Virudhunagar), Sivakasi (distVirudhunagar), Tiruchendur (dist Thoothukudi), Gadana Dam (dist Tenkasi),Kulasekarapattinam (dist Thoothukudi), Kovilpatti (dist Thoothukudi), TNAU Cri Yethapur (dist Salem), Namakkal_AMFU AWS (dist Namakkal) 1 each

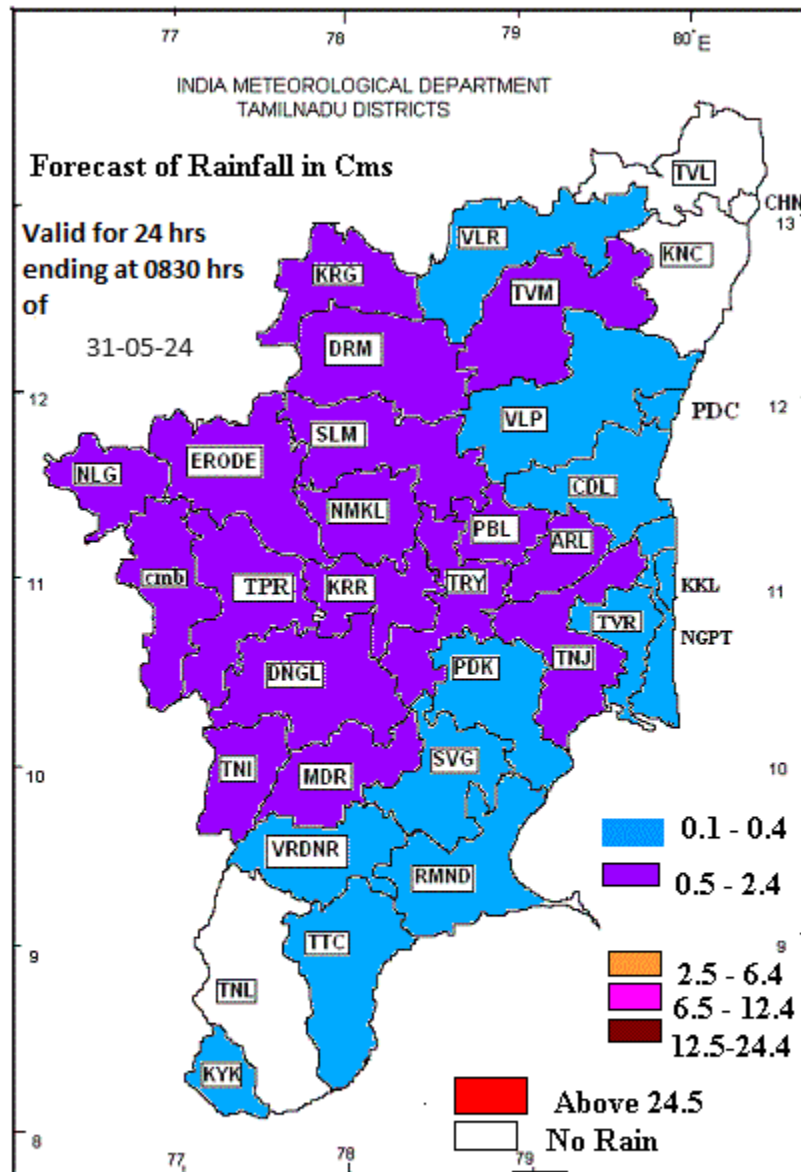
26.05.24 : Kuzhithurai (dist Kanniyakumari) 5, Good Will School Villivakkam ARG (dist Tiruvallur) 3, Zone 06 Kulathur (dist Chennai), Zone 06 TVK Nagar (dist Chennai), Zone 08 Malar Colony (dist Chennai) 2 each, Colachel (dist Kanniyakumari), Mullanginavillai (dist Kanniyakumari), Ayanavaram Taluk Office (dist Chennai), Adayamadai (dist Kanniyakumari), Perambur (dist Chennai), Sivalogam (dist Kanniyakumari), Zone 05 Royapuram (dist Chennai), Thiru-Vi-Ka Nagar (dist Chennai), Zone 03 Madhavaram (dist Chennai), Zone 08 Anna Nagar (dist Chennai) 1 each.

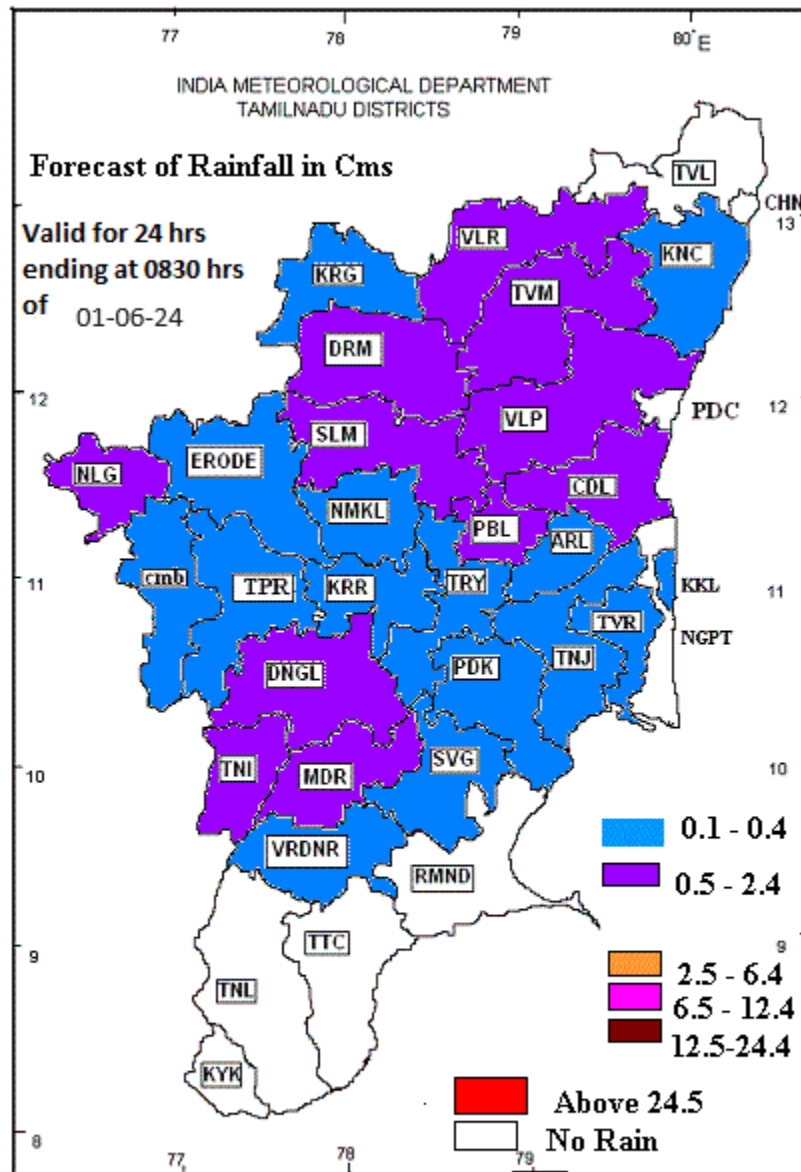
27.05.24 : Mullanginavillai (dist Kanniyakumari) 2 cm

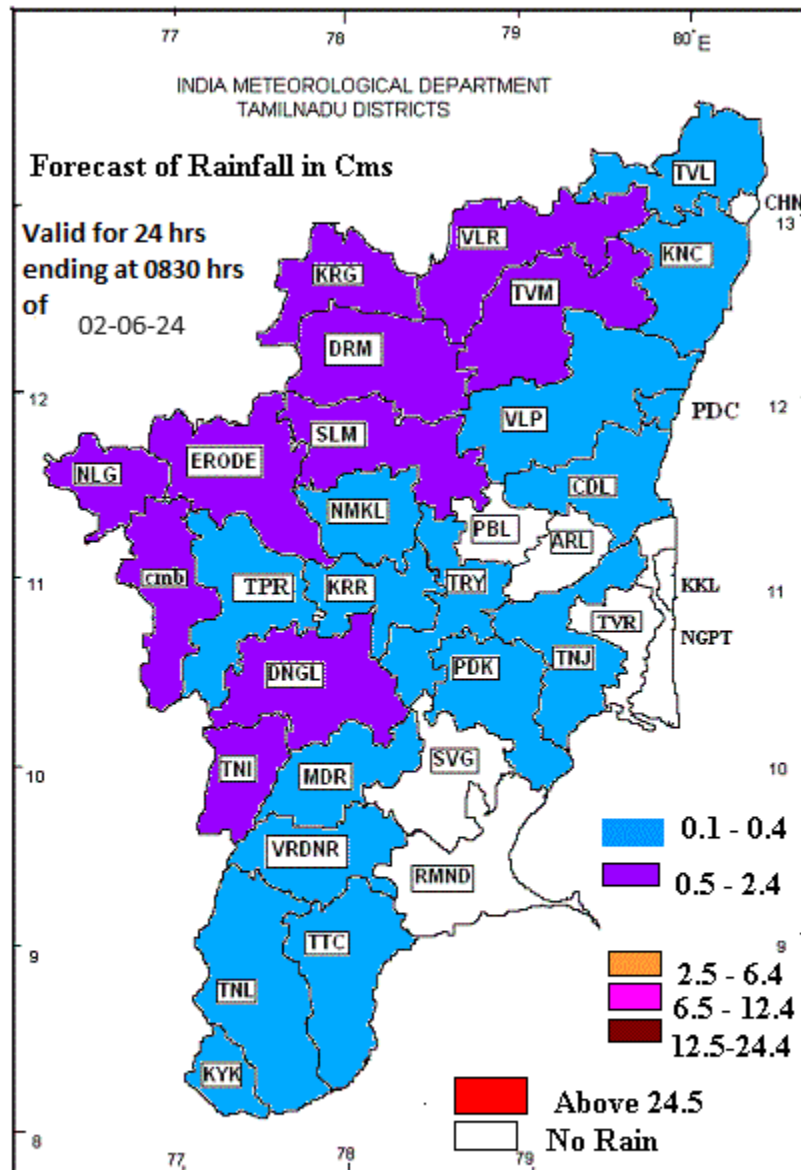
**DISTRICT LEVEL ENSEMBLE WEATHER FORECAST ISSUED ON: 28.05.24
VALID FOR THE NEXT 5 DAYS**











District-wise Agromet Advisories

Chennai, Kancheepuram, Villupuram, Tiruvannamalai, Tiruvallur, Vellore and Cuddalore

SMS Advisory:

(29.05.2024-02.06.2024) Maximum Temperature is likely to increase gradually by 2-3°C over Tamilnadu.

Livestock Advisory:

1. Accidental grazing of new shoots of sorghum fodder may lead to HCN poisoning and death, hence farmers are advised to take precautionary measures
2. Small ruminants overfed with excessive grain feed are at the edge of procuring Enterotoxaemia, hence precautionary measures should be taken
3. The drainage system in cattle shed must be open and blockage free with access to easy cleaning to prevent fly breeding.
4. Increasing the frequency of feeding from three to four times per day to high yielding crossbreed, dairy cattle would nominally increase milk production and at the same time will reduce the heat stress.
5. Rabbitaries with asbestos/metal roofs will experience more heat during summer, hence covering the roof with coconut leaves or gunny bags and splashing water over them will reduce the inner micro climate of rabbit shed.
6. To prevent E.coli infection in nursery piggery shed the floor must be washed with luke warm saline / good irritant free disinfectant atleast weekly once.
7. Native poultry reared under integrated method incase infested with lice, must be given medicated bath. A sponge dipped in one ml of butox mixed in one litre of water could be rubbed all over the body on a bright sunny day. Care must be exercised to avoid eyes ear lobe and mouth.

Agricultural advisory

Rice:

Treat the paddy seeds in Carbendazim or Pyroquilon or Tricyclozole at 2 g/litre of water for 1 kg of seeds. Soak the seeds for 8-10 hrs and drain excess water. This wet seed treatment gives protection to the seedlings up to 40 days from seed borne diseases. If the seeds are required for sowing immediately, keep the soaked seed in gunny in dark and cover with extra gunnies and leave for 24hrs for sprouting. Suitable for Sornavari season (Apr-May) paddy varieties: ADT- 36,37,43,45, 56 and CO-51, CO-57, TPS-5, TRY-5 and ASD-21.

Due to prevailing weather condition chances of thrips infestation in paddy field. To control spray thiamethoxam 25% WG 100 g/ha or dimethoate 1.5ml/l.

Due to prevailing weather condition brown plant leafhopper infestation is found in paddy crop. Symptoms Nymphs and adults congregate at the base of the plant above the water level.

Affected plant dries up and gives a scorched appearance called "hopper burn". Circular patches of drying and lodging of matured plant. To control spray carbosulfan 400 ml/ac + imidaclopride 40 ml/ac or pymetrozine 120 g/ac with wetting agent.

Since light rainfall is expected, it is recommended to complete the spraying and fertilizer application operations during non-rainy hours in rice field. This will ensure that the operations are carried out effectively without being affected by the rain; 2. Due to dry weather condition may cause thrips occurrence in paddy field, to manage spray thiamethoxam 25% WG 100 g/ha; 3. Stem bore- Spray Azadirachtin 0.03% 400 ml (Or) Flubendiamide 20% WG 50g per acre in 200 litres of water; 4. Ear head bug- Spray Neemseed kernel extract 5% (or) spray Malathion 50EC 200 ml/acre

Groundnut:

Treat the groundnut seeds with Trichoderma @ 4g/kg just before sowing.

Suitable for Vaikasi pattam (May-June) groundnut varieties: VRI-10, TMV-10, 14 and TMVG- 13.
Groundnut growing farmers reduce the root rot infection treat the seeds with carbendazim@ 2.0 g/kg of seed 24 hours before sowing (or) Trichoderma viride @ 4.0 g/kg of seed (or) bacillus subtilis @ 10 g/kg seed.

Coconut:

In new coconut plantings the hybrids Dwarf × Tall or Tall × Dwarf may be used.

Mango:

The mango crop harvesting is in progress. The fruit may be harvested with 1cm stalk to avoid flow of latex.

The fruits may be treated with 2ml /lit Ethrel along with few sodium hydroxide pellets for uniform ripening and color development.

Banana:

Light rain fall with 10-19 km/hour wind speed may cause lodging in banana. Providing support to five months and above old banana

Coimbatore

Agro Advisory

| Crop | Stage | Advisory |
|-----------|------------------|---|
| General | | Light rainfall is expected along with heavy wind speeds of 10 – 26 kmph during this week. Inland may have high wind speed. Irrigation may be provided based on soil moisture and apply crop residue mulches to all irrigated crops to maintain sufficient soil moisture. Considering the favourable weather, the postpone irrigation, fertilizer application, spraying and sowing may be continued. |
| Rice | Land preparation | Continue the sowing for Kurvai nursery. |
| Sugarcane | Vegetative | Considering the high wind speed with light rainfall provide propping to the sugarcane by tying opposite row to prevent from lodging. By utilizing the pas week rainfall and soil moisture, late season sugarcane setts may be planted with proper drainage. |
| Cotton | | If cotton is suffering with past week continuous rainfall, Spray NAA 40 ppm to prevent early shedding of buds and squares and increase the yield (40 mg of NAA dissolved in one litre of water will give 40 ppm). |
| Banana | | Considering the high wind speed @ 10 -26 kmph, provide propping to the banana of more than five months old to prevent from lodging. |
| Turmeric | Sowing | By utilizing rainfall, dibbling in turmeric rhizomes may be continued by providing proper drainage. |
| Tapioca | | By utilizing the received and anticipated rainfall harvest may be programmed in Tapioca. |
| Coconut | | Summer rains during next two months may be harvested in root zone of coconut by deepening the tree basin with inward slopes. Till then, ensure to provide 100 liters of water per tree per day to maintain the productivity. |
| Animal | | Do not allow the animals to graze newly emerged grasses to avoid |

| | | |
|-----------|--|------------------|
| Husbandry | | worm infections. |
|-----------|--|------------------|

SMS advisory

Considering the high wind speed @ 10 -26 kmph, provide propping to the banana of more than five months old to prevent from lodging.

Erode

Agro Advisory

| Crop | Stage | Advisory |
|------------------|------------------|---|
| General | | Light rainfall is expected along with heavy wind speeds of 10 – 26 kmph during this week. Inland may have high wind speed. Irrigation may be provided based on soil moisture and apply crop residue mulches to all irrigated crops to maintain sufficient soil moisture. Considering the favourable weather, the postpone irrigation, fertilizer application, spraying and sowing may be continued. |
| Rice | Land preparation | Continue the sowing for Kurvai nursery. |
| Sugarcane | Vegetative | Considering the high wind speed with light rainfall provide propping to the sugarcane by tying opposite row to prevent from lodging. By utilizing the pas week rainfall and soil moisture, late season sugarcane setts may be planted with proper drainage. |
| Cotton | | If cotton is suffering with past week continuous rainfall, Spray NAA 40 ppm to prevent early shedding of buds and squares and increase the yield (40 mg of NAA dissolved in one litre of water will give 40 ppm). |
| Banana | | Considering the high wind speed @ 10 -26 kmph, provide propping to the banana of more than five months old to prevent from lodging. |
| Turmeric | Sowing | By utilizing rainfall, dibbling in turmeric rhizomes may be continued by providing proper drainage. |
| Tapioca | | By utilizing the received and anticipated rainfall harvest may be programmed in Tapioca. |
| Coconut | | Summer rains during next two months may be harvested in root zone of coconut by deepening the tree basin with inward slopes. Till then, ensure to provide 100 liters of water per tree per day to maintain the productivity. |
| Animal Husbandry | | Do not allow the animals to graze newly emerged grasses to avoid worm infections. |

SMS advisory

Considering the high wind speed @ 10 -26 kmph, provide propping to the banana of more than five months old to prevent from lodging.

Tiruppur

Agro Advisory

| Crop | Stage | Advisory |
|------------------|------------|---|
| General | | Light rainfall is expected along with heavy wind speeds of 10 – 26 kmph during this week. Inland may have high wind speed. Irrigation may be provided based on soil moisture and apply crop residue mulches to all irrigated crops to maintain sufficient soil moisture. Considering the favourable weather, the postpone irrigation, fertilizer application, spraying and sowing may be continued. |
| Sugarcane | Vegetative | Considering the high wind speed with high rainfall provide propping to the sugarcane by tying opposite row to prevent from lodging. By utilizing the past week rainfall and soil moisture, late season sugarcane setts may be planted with proper drainage. |
| Cotton | | If cotton is suffering with past week continuous rainfall, Spray NAA 40 ppm to prevent early shedding of buds and squares and increase the yield (40 mg of NAA dissolved in one litre of water will give 40 ppm). |
| Tapioca | | By utilizing the received and anticipated rainfall harvest may be programmed in Tapioca. |
| Coconut | | Summer rains during next two months may be harvested in root zone of coconut by deepening the tree basin with inward slopes. Till then, ensure to provide 100 liters of water per tree per day to maintain the productivity. |
| Animal Husbandry | | Do not allow the animals to graze newly emerged grasses to avoid worm infections. |

SMS advisory

Considering the high wind speed @ 10 -26 kmph, provide propping to the banana of more than five months old to prevent from lodging.

Nilgiris

Moderate rainfall is expected for four day, hence vegetable farmers are requested to drain the excess water in vegetable field by making proper drainage facility. Seeds can be treated with *Trichoderma viride* @ 4g/kg or *Bacillus subtilis* @ 10g/kg to manage seed and soil borne pathogens. Further, soil testing has to be done before any cropping programme. To manage leaf spot in Beetroot crop, foliar spray of mancozeb @ 2 g/l on 45, 60 and 75 days after planting is recommended. Spray may be given during rain free period.

| Horticulture (Stage) | Horticulture Specific Advisory |
|----------------------|--|
| CARROT (Vegetative) | For the management of nematode in carrot, soil application of neem cake @ 1 ton/ha at planting. Biofumigation of mustard plants followed by application of neem cake @ 250kg/ha along with <i>Purpureocillium lilacinum</i> @ 5kg/ha is recommended. Apply may be given during rain free period. |

| | |
|-------------------------------|---|
| BLACK PEPPER (Vegetative) | To manage wilt in pepper, farmers are advised to do the application of Trichoderma viride @ / Pseudomonas or Bacillus 25 gm and Neem cake 500gm is recommended. Apply may be given during rain free period. |
| GARLIC (Vegetative) | Foliar application of water-soluble micronutrient mixture @ 0.5 g/liter of water during 30, 45 and 60 days after planting may be done to increase the Garlic bulb yield. To manage leaf spot / purple blotch in garlic crop, foliar application of mancozeb @ 2 g/l or copper oxychloride @ 2.5 g/l is recommended. Spray may be given during rain free period. |
| POTATO (Vegetative) | To manage early blight in potato, foliar application of hexaconazole 2% SC @ 0.06% or mancozeb @ 2 g/l or chlorothalonil @ 2 g/l at 45, 60 and 75 days after planting is recommended. Spray may be given during rain free period. |
| TEA (Vegetative) | To manage mites in tea crop, foliar application of Azadirachtin 1.0% EC (neem based) 2.0 ml/lit or propargite 57 % EC 2.0 ml/lit is recommended. Spray may be given during rain free period. |

Ariyalur, Karur, Nagapattinam, Perambalur, Thanjavur, Tiruvarur and Tiruchirapalli

Agro Advisory

| Crop | Stage | Advisory |
|---------|--------------|---|
| General | | Farmers can utilize the mobile apps viz., (TNAU AAS, Meghdoot and DAMINI), for more updated weather information. |
| Rice | Nursery | Due to prevailing weather condition chances of thrips infestation in paddy field. To control spray thiamethoxam 25% WG 100 g/ha or dimethoate 1.5ml/l. 2 |
| Coconut | All stages | Rugose Spiralling whitefly is noticed in the prevailed weather condition. Application of water, maida solution as spray in order to increase the population of Encarsia parasitic. Also keep yellow stick trap. |
| Banana | | Provide support with wooden poles to avoid lodging of tree due to rain and wind. |
| Cattle | Cow and Goat | Exposure of calves and kids to rain should be avoided to prevent from pneumonia attack in view of expected high rain. |

SMS advisory

Provide support with wooden poles to avoid lodging of tree due to rain and wind.

Dindigul

| | |
|--------------|---|
| SMS Advisory | Chances of light to Moderate rain during the next five days. Maximum temperature would be in the range of 35°C to 37°C and the minimum temperature would be between 25°C - 27°C. Cloudy sky will appear for the next five days. Wind is expected with the speed of 8-14 Kmph from, West & Northwest directions. |
|--------------|---|

General Advisory:

Extended range Forecast for next week (31st May to 06th June 2024):

Rainfall:

As per extended range predictions, there is possibility of below normal to near normal rainfall likely over the district during 31st May to 06th June 2024.

Maximum Temperature:

Maximum temperatures are likely to be slightly below normal to near normal and are likely to be in the range 28°C to 34°C over the plains of the district during next week. 31st May to 06th June.

Minimum Temperature:

Minimum temperatures are likely to be near normal and are likely to be in the range 20°C to 24°C over the district during next week 31st May to 06th June 2024.

Wind with the speed of 8 to 14 kmph is expected for the next five days. Hence farmers are advised to provide propping in sugarcane and to provide adequate support for crops like Banana, Papaya, Guava and Moringa, to prevent from lodging. For Gourds check the structures /pandhals for damages in the strings and poles and provide adequate support. Postpone the spraying activity.

Maximum temperatures is likely to be above normal by 2 - 3°C one or two places and are likely to be in the range of 35°C to 37°C, over the district from 29th to 31st May 2024.

Weather Based Agro-Advisories: (Chilly, Jasmine & Animal Husbandry)

Chilly:

The incense of Bacterial leaf spot disease noticed in Chilli. The symptoms exhibited in the leaves, are small circular, or irregular, dark brown or black greasy spots.

Severely affected leaves become chlorotic and fall off. Round, raised water-soaked spots with a pale-yellow border are seen on the fruits, and the fruits will fall off.

Spray Agrimycin @ 175gm with 500 litres of water/per acre.

Jasmine:

The incidence of Flower midge is expected in Jasmine.

At the beginning stage, affected buds turn into yellowish grey colour and buds become smaller in size with brown colour.

To control, spray Profenophos @ 30ml + Cartap hydrochloride @ 20gm + sticky agent @ 10ml with 10 litres of water.

Animal Husbandry:

Due to the prevailing weather conditions, Enterotoxaemia disease may affect the Goats. The main symptom of the disease is sudden death in young growing kids. Mucous diarrhea may also be seen during death.

To prevent this disease, do not feed on young grass, allow the goat to graze one hour after the sunshine.

Vaccinate the animals once a year before the onset of monsoon.

Madurai

| | |
|--------------|---|
| SMS Advisory | Chances of light rain during the next five days. Maximum temperature would be in the range of 35°C to 37°C and the minimum temperature would be between 25°C - 27°C. Cloudy sky will appear for the next five days. Wind is expected with the speed of 6-12 Kmph from, West, Northwest, Southwest directions. |
|--------------|---|

General Advisory:

Extended range Forecast for next week (31st May to 06th June 2024):

Rainfall:

As per extended range predictions, there is possibility of below normal to near normal rainfall likely over the district during 31st May to 06th June 2024.

Maximum Temperature:

Maximum temperatures are likely to be slightly below normal to near normal and are likely to be in the range 28°C to 34°C over the plains of the district during next week. 31st May to 06th June.

Minimum Temperature:

Minimum temperatures are likely to be near normal and are likely to be in the range 20°C to 24°C over the district during next week 31st May to 06th June 2024.

Wind with the speed of 6 to 12 kmph is expected for the next five days. Hence farmers are advised to provide propping in sugarcane and to provide adequate support for crops like Banana, Papaya, Guava and Moringa, to prevent from lodging. For Gourds check the structures /pandhals for damages in the strings and poles and provide adequate support. Postpone the spraying activity.

Maximum temperatures is likely to be above normal by 2 - 3°C one or two places and are likely to be in the range of 35°C to 37°C, over the district from 29th to 31st May 2024.

Weather Based Agro-Advisories: (Paddy, Sugarcane & Animal Husbandry)

Paddy:

The prevailing weather conditions are favorable for gall midge infection in rice. It leads to the formation of an onion-like leaf and prevents panicle formation.

To control this, apply Thiamethoxam 25 % WG 100gm/ha.

Sugarcane:

Prevailing weather conditions are optimum for filling up gaps in sugarcane.

Within 30 days from planting, fill the gaps with two budded setts or 15-20 days polybag seedlings to maintain optimum plant stand.

Maintain adequate moisture for 3 weeks for the proper establishment of the sprouted setts.

Animal Husbandry:

Due to the prevailing weather conditions, Enterotoxaemia disease may affect the Goats. The main symptom of the disease is sudden death in young growing kids. Mucous diarrhea may also be seen during death.

To prevent this disease, do not feed on young grass, allow the goat to graze one hour after the sunshine.

Vaccinate the animals once a year before the onset of monsoon.

Pudukottai

| | |
|--------------|---|
| SMS Advisory | Chances of light rain on 31 May & 1 June. Maximum temperature would be in the range of 35°C to 38°C and the minimum temperature would be between 27°C - 30°C. Cloudy sky will appear for the next five days. Wind is expected with the speed of 12-16 Kmph from, West & Southwest directions. |
|--------------|---|

General Advisory:

Extended range Forecast for next week (31st May to 06th June 2024):

Rainfall:

As per extended range predictions, there is possibility of below normal to near normal rainfall likely over the district during 31st May to 06th June 2024.

Maximum Temperature:

Maximum temperatures are likely to be slightly below normal to near normal and are likely to be in the range 34°C to 38°C over the plains of the district during next week. 31st May to 06th June.

Minimum Temperature:

Minimum temperatures are likely to be near normal and are likely to be in the range 24°C to 28°C over the district during next week 31st May to 06th June 2024.

Wind with the speed of 12 to 16 kmph is expected for the next five days. Hence farmers are advised to provide propping in sugarcane and to provide adequate support for crops like Banana, Papaya, Guava and Moringa, to prevent from lodging. For Gourds check the structures /pandhals for damages in the strings and poles and provide adequate support. Postpone the spraying activity.

Maximum temperatures is likely to be above normal by 2 - 3°C one or two places and are likely to be in the range of 35°C to 38°C, over the district from 29th to 31st May 2024

Weather Based Agro-Advisories: (Cashew, Sorghum & Animal Husbandry)

Cashew:

Old and senile cashew orchards with poor yielders are cut down leaving a stump of 1 – 3 m in height from the ground level.

The emerging new sprouts are used as rootstock for epicotyl grafting.

Suitable scions are collected and grafted onto the new sprouts.

Sorghum:

Average and well-distributed rainfall of 250-300 mm is optimum for rain-fed sorghum. The seed requirement is 15 kg/ha., Seed hardening ensures high germination.

The seeds can be sown after being pre-soaked in 20gms of potassium di-hydrogen phosphate solution for 6 hours and then dried back to their original moisture content in the shade.

Animal Husbandry:

Due to the prevailing weather conditions, Enterotoxaemia disease may affect the Goats. The main symptom of the disease is sudden death in young growing kids. Mucous diarrhea may also be seen during death.

To prevent this disease, do not feed on young grass, allow the goat to graze one hour after the sunshine.

Vaccinate the animals once a year before the onset of monsoon.

Ramanathapuram

| | |
|--------------|--|
| SMS Advisory | Chances of light rain on 29 & 31 May .Maximum temperature would be in the range of 35°C to 36°C and the minimum temperature would be between 25°C - 26°C. Generally cloudy sky will appear for the next five days. Wind is expected with the speed of 14-28 Kmph from, Southwest & South directions. |
|--------------|--|

General Advisory:

Extended range Forecast for next week (31st May to 06th June 2024):

Rainfall:

As per extended range predictions, there is possibility of below normal to near normal rainfall likely over the district during 31st May to 06th June 2024.

Maximum Temperature:

Maximum temperatures are likely to be slightly below normal to near normal and are likely to be in the range 34°C to 38°C over the plains of the district during next week. 31st May to 06th June.

Minimum Temperature:

Minimum temperatures are likely to be near normal and are likely to be in the range 24°C to 28°C over the district during next week 31st May to 06th June 2024.

Wind with the speed of 14 to 28 kmph is expected for the next five days. Hence farmers are advised to provide propping in sugarcane and to provide adequate support for crops like Banana, Papaya, Guava and Moringa, to prevent from lodging. For Gourds check the structures /pandhals for damages in the strings and poles and provide adequate support. Postpone the spraying activity.

Maximum temperatures is likely to be above normal by 2 - 3°C one or two places and are likely to be in the range of 30°C to 36°C, over the district from 29th to 31st May 2024

Weather Based Agro-Advisories: (Cumbu, Cotton & Animal Husbandry)

Cumbu:

Prevailing weather is suitable for sowing Cumbu. CO7, CO (Cu) 9, X7, ICMV 221, and TNAU Cumbu hybrid Co9 varieties are suitable for rain-fed conditions.

Soaking of cumbu seeds either in 2% Potassium chloride (KCl) or 3% Sodium Chloride (NaCl) for 16 hours followed by 5 hours of shade drying improves germination and stand.

Adopt the spacing of 45 x 15 cm for all varieties. One pair row of cumbu, alternated with a single row of pulse crop.

Cotton:

Due to the prevailing weather conditions the incense Thrips in cotton.

The symptoms are, the shriveling of leaves due to the scrapping of the epidermis and de-sapping.

Attacked terminal buds have ragged edges. A silvery shiny appearance seems under the surface of the leaves.

To control, spray Imidacloprid 200 SL @ 100 ml/acre.

Animal Husbandry:

Due to the prevailing weather conditions, Enterotoxaemia disease may affect the Goats. The main symptom of the disease is sudden death in young growing kids. Mucous diarrhea may also be seen during death.

To prevent this disease, do not feed on young grass, allow the goat to graze one hour after the sunshine.

Vaccinate the animals once a year before the onset of monsoon.

Sivagangai

| | |
|-----------------|--|
| SMS Advisory | Chances of light rain on 31 May & 1 June. Maximum temperature would be in the range of 35°C to 37°C and the minimum temperature would be between 25°C - 27°C. Cloudy sky will appear for the next five days. Wind is expected with the speed of 10-18 Kmph from, Southwest & South directions. |
|-----------------|--|

General Advisory:

Extended range Forecast for next week (31st May to 06th June 2024):

Rainfall:

As per extended range predictions, there is possibility of below normal to near normal rainfall likely over the district during 31st May to 06th June 2024.

Maximum Temperature:

Maximum temperatures are likely to be slightly below normal to near normal and are likely to be in the range 28°C to 34°C over the plains of the district during next week. 31st May to 06th June.

Minimum Temperature:

Minimum temperatures are likely to be near normal and are likely to be in the range 20°C to 24°C over the district during next week 31st May to 06th June 2024.

Wind with the speed of 10 to 18 kmph is expected for the next five days. Hence farmers are advised to provide propping in sugarcane and to provide adequate support for crops like Banana, Papaya, Guava and Moringa, to prevent from lodging. For Gourds check the structures /pandhals for damages in the strings and poles and provide adequate support. Postpone the spraying activity.

Maximum temperatures is likely to be above normal by 2 - 3°C one or two places and are likely to be in the range of 35°C to 37°C, over the district from 29th to 31st May 2024.

Weather Based Agro-Advisories: (Sugarcane, Jasmine & Animal Husbandry)

Sugarcane:

Micro-nutrient deficiency symptoms were noticed in sugarcane crops.

To alleviate the micronutrient deficiency as well as to improve the yield of ratoon sugarcane, foliar spraying of Sugarcane booster @ 1kg/acre at the time of 45 days after planting and 1.5kg/acre at the time of 60 days after planting .

Repeat the spraying of Sugarcane booster @ 2kg/acre at the time of 75 days after planting.

(Mix the booster with 200 litres of water along with the sticking agent).

Jasmine:

The incense of Budworm may be noticed in Jasmine. The budworm caterpillar makes the hole in the flower bud and feeds on the inner content. Petals are eaten by larvae.

Collect and destroy the damaged buds with larvae.

Use a light trap to attract and kill the adult moths.

Spray Neem Seed Kernel Extract (NSKE) @ 5% (ie.,50gm dry seed powder per litre of water + 2gm detergent soap). Always use freshly prepared NSKE.

Spray the extract in the evening hours (after 3:30 P.m.) to get effective results.

The Jasmine bushes should be pruned properly and the fields should be maintained cleanly.

Animal Husbandry:

Due to the prevailing weather conditions, Enterotoxaemia disease may affect the Goats. The main symptom of the disease is sudden death in young growing kids. Mucous diarrhea may also be seen during death.

To prevent this disease, do not feed on young grass, allow the goat to graze one hour after the sunshine.

Vaccinate the animals once a year before the onset of monsoon.

Theni

| | |
|--------------|---|
| SMS Advisory | Chances of light to Moderate rain during the next five days. Maximum temperature would be in the range of 30°C to 34°C and the minimum temperature would be between 20°C - 23°C. Cloudy sky will appear for the next five days. Wind is expected with the speed of 10-14 Kmph from, West direction. |
|--------------|---|

General Advisory:

Extended range Forecast for next week (31st May to 06th June 2024):

Rainfall:

As per extended range predictions, there is possibility of below normal to near normal rainfall likely over the district during 31th May to 06th June 2024.

Maximum Temperature:

Maximum temperatures are likely to be slightly below normal to near normal and are likely to be in the range 28°C to 34°C over the plains of the district during next week. 31th May to 06th June.

Minimum Temperature:

Minimum temperatures are likely to be near normal and are likely to be in the range 20°C to 24°C over the district during next week 31st May to 06th June 2024.

Wind with the speed of 10 to 14 kmph is expected for the next five days. Hence farmers are advised to provide propping in sugarcane and to provide adequate support for crops like Banana, Papaya, Guava and Moringa, to prevent from lodging. For Gourds check the structures /pandhals for damages in the strings and poles and provide adequate support. Postpone the spraying activity.

Maximum temperatures is likely to be above normal by 2 - 3°C one or two places and are likely to be in the range of 30°C to 34°C, over the district from 29th to 31st May 2024

Weather Based Agro-Advisories: (Rose, Black gram & Animal Husbandry)

Rose:

Since the monsoon is expected in a couple of weeks. Flower cultivators are advised to prepare for planting the rose cuttings.

Cuttings with 2-3 buds are suitable for planting.

Dug, pits of 45 cm x 45 cm x 45 cm at 2m x 1m spacing .

Apply 10 kg of Farm Yard Manure to each pit before planting.

Black gram:

In rice fallow black gram, spray DAP (2%) + KCl (1%) solution in the morning or evening at flower initiation and another at 15-day intervals.

Alternatively, “pulse wonder” at 5.0 kg/ha can be sprayed during flower initiation.

Animal Husbandry:

Due to the prevailing weather conditions, Enterotoxaemia disease may affect the Goats. The main symptom of the disease is sudden death in young growing kids. Mucous diarrhea may also be seen during death.

To prevent this disease, do not feed on young grass, allow the goat to graze one hour after the sunshine.

Vaccinate the animals once a year before the onset of monsoon.

Virudhunagar

| Crop | Stage | Agromet Advisory |
|---------------------------------|--------------------------|--|
| Irrigated crops | Water management | Rainfall is predicted. Farmers are advised to irrigate the crop based on local weather condition |
| Rainfed / irrigated crops | Plant protection | Avoid spraying. |
| Summer ploughing | Moisture conservation | Farmers are requested for summer ploughing to hold the anticipated rainfall. |
| Paddy | Panicle Initiation stage | Farmers are advised to postpone the irrigation. |
| Rice fallow pulses (Black gram) | Pod development stage | |
| Banana | All the stage | Farmers are advised to practice propping and earthing up to avoid lodging due to wind. |
| Livestock | Rainfall and thunder | Proper shelter to be maintained to avoid entry of rainfall and disease spread. Keep animals away from open water, pond or river. |

SMS: Rain: 30-020.06-2,3,2&4 mm. Postpone the irrigation and spraying. Banana - practice propping and earthing up.

Tirunelveli

| Crop | Stage | Agro met Advisory |
|------------------|-----------------------|--|
| Irrigated crops | Water management | Farmers are request to provide irrigation based on the local weather condition. |
| Irrigated crops | Plant protection | Spraying may be practiced early morning. |
| Summer ploughing | Moisture conservation | Farmers are requested for summer ploughing to hold the anticipated rainfall. |
| Paddy | Vegetative stage | Maintain the water level to avoid lodging of crop. Weather favours for Whorl maggot. To control spray Cartap Hydrochloride 4% G 7.5-10 kg/ac. |
| Vegetables | Rainfall | Harvest the products as earlier to avoid the rainfall damage |
| Banana | All the stage | Farmers are advised to practice propping and earthing up to avoid lodging due to wind. |
| Livestock | Rainfall and thunder | Proper shelter to be maintained to avoid entry of rainfall and disease spread. Keep animals away from open water, pond or river. |

SMS: Rain:29,30,02.06-1,1&2 mm. Irrigation based on local weather and spraying at early morning.
Paddy - Whorl maggot - spray Cartap Hydrochloride 4% G@ 7.5-10 kg/ac. Banana–wind-practice propping.

Thoothukudi

| Crop | Stage | Agromet Advisory |
|------------------|--------------------------|--|
| Irrigated crops | Water management | Farmers are advised to irrigate the crop based on local weather condition |
| Summer ploughing | Moisture conservation | Farmers are requested for summer ploughing to hold the rainfall in future. |
| Paddy | Panicle initiation stage | Farmers are advised to irrigate the crop. |
| Banana | All the stage | Farmers are advised to practice propping and earthing up to avoid lodging due to wind. |
| Livestock | Rainfall and thunder | Proper shelter to be maintained to avoid entry of rainfall and disease spread. Keep animals away from open water, pond or river. |

SMS: Rain: 31,02.06-2&4 mm. Irrigate the crop. Banana – wind-practice propping and earthing up.

| Tamil Nadu | | |
|--|----------------|--|
| A cyclonic circulation lies over south Tamil Nadu & neighbourhood at 5.8 km above mean sea level. The conditions continue to become favourable for Monsoon onset over Kerala during next 3-4 days. | | |
| Weather forecast | Next five days | Light to moderate rain is likely to occur at one or two places over Tamilnadu, Puducherry and Karaikal area Day 1 (29.05.2024) to Day 3 (31.05.2024) Light to moderate rain at a few places with thunderstorm and lightning at one or two places is likely to occur over Tamilnadu, Puducherry and Karaikal area Day 4 (01.05.2024) to Day 5 (02.06.2024) |

Kanyakumari

AGRO ADVISORIES

| S. N. | CROP | STAGES | ADVISORIES |
|-------|----------------------|-----------------|---|
| 1. | Horticultural crops. | Planting stage. | As 18 - 26 km / hr wind speed is anticipated, it is advised to provide staking to newly planted horticultural plants. |
| 2. | Horticultural crops. | New Planting | New Planting can be taken up for all the Horticultural crops. |
| 3. | Horticultural crops. | All stages | Basins can be formed and coir compost should be applied to conserve moisture in banana, pepper, clove, nutmeg, cinnamon and coconut. |
| 4. | Banana | Planting stage | Nemetode Management: Trim the roots and decayed portion of the corm and paring and pralinance with 40g carbofuran 3G granules per sucker to control the nematode infestation. |
| 5. | Coconut | All stages | Provide the proper drainage in coconut field to avoid fungus root damage. |
| 6. | Pepper | All stages | The runner shoots may be protected from spreading on the ground by coiling it on supports. |

SMS Advisory

Preparatory cultivation can be started for planting of paddy and horticultural crops such as vegetables, rubber, coconut etc.

Salem

Weather Advisory Bulletin for livestock, poultry and agro advisory

| Livestock, Poultry & Crop | Stage | Weather advisory |
|---------------------------|---------|---|
| Livestock | General | <p>In the recent days, there has been a rainy day followed by shine days in a week, this prevailing temperature and relative humidity is found to be an ideal condition for fly breeding.</p> <p>This has led to a high fly population in poultry farms. A simple technique is commonly practised to monitor fly population is spot card, which helps to take decision on fly control measures at an appropriate time.</p> <p>A white paper of size 5 x 3 inch mounted on a cardboard with pin and keep 5 – 10 spot cards per shed for 24 hour. After 24 hour, cards are collected and fly specks spots (faecal and vomit drops) can be counted to arrive approximate number of flies.</p> <p>If the fly spots are above 100, necessary control measures have to be taken.</p> <p>To control fly menace, the farm premises should be maintained hygienically through replacement of faulty nipples, proper disposal of dead birds and broken eggs.</p> <p>If fly intensity is high, the birds should be fed with Insect Growth Regulators mixed feed.</p> |

| Agro advisory from Krishi Vigyan Kendra | | |
|---|------------------|---|
| Groundnut | Sowing season | Farmers are advised to do groundnut seed treatment with Trichoderma viride (4 gram / 1 kg of seed) before sowing and also apply soil application of Trichoderma viride@ 1 kg + 10 kg farmyard manure / acre to control collar rot disease during early stage of groundnut crop. |
| Tapioca | Vegetative stage | <p>Spiraling whitefly in Tapioca</p> <p>Symptoms</p> <p>The infested leaves will become yellow. Development of Sooty mould fungus in lower leaves.</p> <p>Management measures</p> <p>Removal of unwanted weeds and infested leaves.</p> <p>Setting up of yellow sticky trap @10 – 15 numbers / acre for monitoring.</p> <p>If the damage is beyond the economic threshold level, foliar spraying of Neem oil @ 3 % and foliar application of Imidacloprid @ 1 ml / litre or thiamethoxam @ 1 gram / litre of water /acre may be undertaken.</p> |
| Coconut | General | Farmers are requested to apply coconut micronutrient mixture along with farm yard manure in order to control the button shedding in coconut as well as to improve the yield by using current rainfall. |
| Crops | General | Farmers are requested to do ploughing by utilizing the current rainfall and also make bund around the field to conserve the rainfall. |

Namakkal

Weather Advisory Bulletin for livestock, poultry and agriculture

| Livestock, Poultry & Crop | Stage | Weather advisory |
|---------------------------|---------|---|
| Livestock | General | <p>In the recent days, there has been a rainy day followed by shine days in a week, this prevailing temperature and relative humidity is found to be an ideal condition for fly breeding.</p> <p>This has led to a high fly population in poultry farms. A simple technique is commonly practised to monitor fly population is spot card, which helps to take decision on fly control measures at an appropriate time.</p> <p>A white paper of size 5 x 3 inch mounted on a cardboard with pin and keep 5 – 10 spot cards per shed for 24 hour. After 24 hour, cards are collected and fly specks spots (faecal and vomit drops) can be counted to arrive approximate number of flies.</p> <p>If the fly spots are above 100, necessary control measures have to be taken.</p> <p>To control fly menace, the farm premises should be maintained hygienically through replacement of faulty nipples, proper disposal of dead birds and broken eggs.</p> <p>If fly intensity is high, the birds should be fed with Insect Growth Regulators mixed feed.</p> |

Agro advisory from Krishi Vigyan Kendra, Namakkal :

| | | |
|-----------|------------------|--|
| Groundnut | Sowing season | Farmers are advised to do groundnut seed treatment with Trichoderma viride (4 gram / 1 kg of seed) before sowing and also apply soil application of Trichoderma viride@ 1 kg + 10 kg farmyard manure / acre to control collar rot disease during early stage of groundnut crop. |
| Tapioca | Vegetative stage | Spiraling whitefly in Tapioca Symptoms |

| | | |
|---------|---------|--|
| | | <p>The infested leaves will become yellow. Development of Sooty mould fungus in lower leaves.</p> <p>Management measures</p> <p>Removal of unwanted weeds and infested leaves.</p> <p>Setting up of yellow sticky trap @10 – 15 numbers / acre for monitoring.</p> <p>If the damage is beyond the economic threshold level, foliar spraying of Neem oil @ 3 % and foliar application of Imidacloprid @ 1 ml / litre or thiamethoxam @ 1 gram / litre of water /acre may be undertaken.</p> |
| Coconut | General | <p>Farmers are requested to apply coconut micronutrient mixture along with farm yard manure in order to control the button shedding in coconut as well as to improve the yield by using current rainfall.</p> |
| Crops | General | <p>Farmers are requested to do ploughing by utilizing the current rainfall and also make bund around the field to conserve the rainfall.</p> |

Dharmapuri

Weather Advisory Bulletin for livestock, poultry and agriculture

| Livestock, Poultry & Crop | Stage | Weather advisory |
|---|------------------|---|
| Livestock | General | <p>In the recent days, there has been a rainy day followed by shine days in a week, this prevailing temperature and relative humidity is found to be an ideal condition for fly breeding.</p> <p>This has led to a high fly population in poultry farms. A simple technique is commonly practised to monitor fly population is spot card, which helps to take decision on fly control measures at an appropriate time.</p> <p>A white paper of size 5 x 3 inch mounted on a cardboard with pin and keep 5 – 10 spot cards per shed for 24 hour. After 24 hour, cards are collected and fly specks spots (faecal and vomit drops) can be counted to arrive approximate number of flies.</p> <p>If the fly spots are above 100, necessary control measures have to be taken.</p> <p>To control fly menace, the farm premises should be maintained hygienically through replacement of faulty nipples, proper disposal of dead birds and broken eggs.</p> <p>If fly intensity is high, the birds should be fed with Insect Growth Regulators mixed feed.</p> |
| Agro advisory from Krishi Vigyan Kendra | | |
| Groundnut | Sowing season | <p>Farmers are advised to do groundnut seed treatment with Trichoderma viride (4 gram / 1 kg of seed) before sowing and also apply soil application of Trichoderma viride@ 1 kg + 10 kg farmyard manure / acre to control collar rot disease during early stage of groundnut crop.</p> |
| Tapioca | Vegetative stage | <p>Spiraling whitefly in Tapioca</p> <p>Symptoms</p> <p>The infested leaves will become yellow. Development of Sooty mould fungus in lower leaves.</p> <p>Management measures</p> <p>Removal of unwanted weeds and infested leaves.</p> <p>Setting up of yellow sticky trap @10 – 15 numbers / acre for monitoring.</p> <p>If the damage is beyond the economic threshold level, foliar spraying of Neem oil @ 3 % and foliar application of Imidacloprid @ 1 ml / litre or thiamethoxam @ 1 gram / litre</p> |

| | | |
|---------|---------|--|
| | | of water /acre may be undertaken. |
| Coconut | General | Farmers are requested to apply coconut micronutrient mixture along with farm yard manure in order to control the button shedding in coconut as well as to improve the yield by using current rainfall. |
| Crops | General | Farmers are requested to do ploughing by utilizing the current rainfall and also make bund around the field to conserve the rainfall. |

Krishnagiri

Weather Advisory Bulletin for livestock, poultry and agriculture

| Livestock, Poultry & Crop | Stage | Weather advisory |
|---|------------------|---|
| Livestock | General | <p>In the recent days, there has been a rainy day followed by shine days in a week, this prevailing temperature and relative humidity is found to be an ideal condition for fly breeding.</p> <p>This has led to a high fly population in poultry farms. A simple technique is commonly practised to monitor fly population is spot card, which helps to take decision on fly control measures at an appropriate time.</p> <p>A white paper of size 5 x 3 inch mounted on a cardboard with pin and keep 5 – 10 spot cards per shed for 24 hour. After 24 hour, cards are collected and fly specks spots (faecal and vomit drops) can be counted to arrive approximate number of flies.</p> <p>If the fly spots are above 100, necessary control measures have to be taken.</p> <p>To control fly menace, the farm premises should be maintained hygienically through replacement of faulty nipples, proper disposal of dead birds and broken eggs.</p> <p>If fly intensity is high, the birds should be fed with Insect Growth Regulators mixed feed.</p> |
| Agro advisory from Krishi Vigyan Kendra | | |
| Groundnut | Sowing season | Farmers are advised to do groundnut seed treatment with Trichoderma viride (4 gram / 1 kg of seed) before sowing and also apply soil application of Trichoderma viride@ 1 kg + 10 kg farmyard manure / acre to control collar rot disease during early stage of groundnut crop. |
| Tapioca | Vegetative stage | <p>Spiraling whitefly in Tapioca</p> <p>Symptoms The infested leaves will become yellow. Development of Sooty mould fungus in lower leaves.</p> <p>Management measures Removal of unwanted weeds and infested leaves. Setting up of yellow sticky trap @10 – 15 numbers / acre for monitoring. If the damage is beyond the economic threshold level, foliar spraying of Neem oil @ 3 % and foliar application of Imidacloprid @ 1 ml / litre or thiamethoxam @ 1 gram / litre of water /acre may be undertaken.</p> |
| Coconut | General | Farmers are requested to apply coconut micronutrient mixture along with farm yard manure in order to control the button shedding in coconut as well as to improve the yield by using current rainfall. |
| Crops | General | Farmers are requested to do ploughing by utilizing the current rainfall and also make bund around the field to conserve the rainfall. |

Karaikal

Agro Advisory

| Crop/livestock | Stage/Particulars | Agro Advisory |
|----------------|--------------------------------|--|
| Cotton | Vegetative and flowering stage | Cloudy weather with rain may increase the shedding of buds and squares in cotton. To prevent early shedding of buds and squares in cotton spray 40 ppm NAA (40 mg of Naphthalene Acetic Acid in one litre of water) at 60 and 90 DAS on the crops. |
| | | Nipping may be done at 15th node for variety and 20th node for hybrid cotton to induce sympodial branches development. |
| Brinjal | Flowering to Bearing stage | To manage Brinjal shoot borer, spray Emamectin Benzoate 4% SG @ 0.4g/l. |
| Gourds | Flowering stage | Spray ethrel @ 100 ppm (1 ml/10 litres of water) in snake gourd and bitter gourd and @ 250 ppm (2.5 ml/10 litres of water) in ribbed gourd, four times commencing from 15th day after sowing at weekly intervals to increase female flowers. |
| Coconut | Bearing stage | Root feeding of coconut tonic (200 ml / tree) in 3 months interval to avoid button shedding in coconut. |

SMS: Light rain is expected for next few days. Hence, postpone irrigation to crops.

Puducherry

Agro Advisory

| Crop | Stage/Particulars | Agro Advisory |
|------------|----------------------------------|---|
| Rice | Tillering stage | To manage Bacterial leaf blight in paddy, spray fresh cow-dung extract 20% twice (starting from initial appearance of the disease and another at fortnightly interval) or spray Copper hydroxide 77 WP @ 2.5 g/l. |
| | | To manage sheath rot in rice apply Hexaconazole 5% EC @ 2 ml/l or neem seed kernel extract 5%. |
| Black gram | Yellow mosaic virus | Installation of yellow sticky traps 12 nos/ha Rogue out the infected plants up to 45 days Foliar spray of notchi leaf extract 10% at 30 DAS or neem formulation 3 ml/lit Spray methyl demeton 25 EC 500 ml/ha or dimethoate 30 EC 500 ml/ha. |
| Sesame | Flowering to pod formation stage | In Sesame, to manage capsule borer spray neem seed kernel extract 5% or neem oil 3%. |
| | | In Sesame, to manage Jassids, apply Acetamiprid 20 SP @ 0.3g/l. |
| Cassava | Vegetative stage | To manage red mite in Cassava, apply Pongamia oil 1 ml/l or spray Propargite 1.5 ml and Sulphur 2.5 g/ l. |

| | | |
|-----------|----------------------------|--|
| Sugarcane | Vegetative stage | To control shoot borer in sugarcane, soil application of Cartaphydrochloride 4G 10kg/hectare may be done. |
| Brinjal | Flowering to Bearing stage | To manage Brinjal shoot borer, spray Emamectin Benzoate 4% SG @ 0.4g/l. |
| Gourds | Flowering stage | Spray ethrel @ 100 ppm (1 ml/10 litres of water) in snake gourd and bitter gourd and @ 250 ppm (2.5 ml/10 litres of water) in ribbed gourd, four times commencing from 15th day after sowing at weekly intervals to increase female flowers. |
| Coconut | Bearing stage | To control spiralling whitefly in coconut, spray water forcibly and set up yellow sticky trap @ 8 numbers /ac. In severe cases, spray neem oil 0.5 %+ tween 80 (0.005%). |
| | | Root feeding of coconut tonic (200 ml / tree) in 3 months interval to avoid button shedding in coconut. |

SMS: Light rain is expected on 29th, 31st May and 02nd June. Hence, postpone irrigation to crops.

=====