

## KVK Guidelines

### Conceptual Framework of Farm Science Centre

- The Mohan Sinha Mehta Committee laid down three basic concepts of Farm Science Centre
- The KVK will impart learning through work-experience and hence will be concerned with technical literacy, the acquisition of which does not necessarily require as a pre-condition for the ability to read and write.
- The KVK will impart training to only those extension workers who are already employed or to the practicing farmers and fishermen. In other words, the KVK will cater to the needs of those who are already employed or those who wish to be self-employed.
- There will be no uniform syllabus for a KVK. The syllabus and programme of each KVK will be tailored to the felt needs, natural resources and the potential for agricultural growth in that particular area.

### Mandates of Farm Science Centre

- Assessment refinement & Demonstration of technologies/products

### Activities

- ❖ On-farm testing to identify the location specificity of agricultural technologies under various farming systems
- ❖ Organize Frontline Demonstrations to establish production potential of technologies on the farmers' fields
- ❖ Training of farmers to update their knowledge and skills in modern agricultural technologies
- ❖ Training of extension personnel to orient them in the frontier areas of technology development
- ❖ To work as resource and knowledge centre of agricultural technology for supporting initiatives of public, private and voluntary sector for improving the agricultural economy of the district

### Important Components

- Scientific Advisory Committee (SAC) Consisting representation of stakeholders & meeting once in a year to review & priority setting
- Demonstration Units : Location specific to educate farmers
- Crop Cafeteria : Providing options to farmers to select from
- Diagnostic and Advisory Services : Diagnostic & advisory at Farm Science Centre Expert visit to Farmers field
- Seed, planting material production and other products as technology inputs
- Revolving fund : Maintenance of account, use for farm related activities
- Technology backstopping by Agricultural Universities/Research organizations

### Major Issues

- Diverse agro climatic settings
- Harnessing Human Capital
- Flagship programmes
- Visibility, vibrancy & effectiveness of Farm Science Centre
- Specialization & excellence
- Agro advisory & agri alert
- Documentation of innovation, cases & success stories
- Farmers reach (footprints)- Farm Science Centre outreach
- Increasing expectations
- Challenging - coordination & monitoring

## Thrust

- Farm Science Centre as a platform for alliance of ICAR, Universities-State Govt. – NGOs
- Product development, convergence, farmer led extension & women empowerment
- Models of public-private partnership to be evolved for development of processes, technology application and its flow
- Host institutions to take up the issues like use of ICT, methodological backstopping, quality production and other such interventions.
- Farm Science Centre to build agri-alert system, agro-advisory through mobile, technology park for better clientele services.
- Inter exchange of technologies, methodologies ,visits, HRD, etc.
- Extension research and impact evaluation studies
- Developing indigenous models and methods for enhancing the efficiency of the extension system.
- Promotion of modern equipments and machinery in farm sector, also locally fabricated and modified tools
- State level Farm Science Centre Interface
- Development of Farm Science Centre websites, creation of data base & content development.
- Farmers' Reach (footprint) and Farm Science Centre outreach.

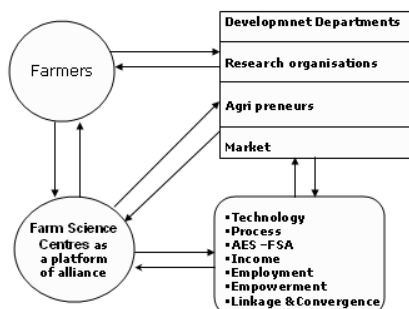
## Technology Focus

- food security
- livestock, poultry & fisheries development
- resource conservation
- climate resilience
- water harvesting
- quality production
- post harvest & value addition
- biodiversity
- drudgery reduction

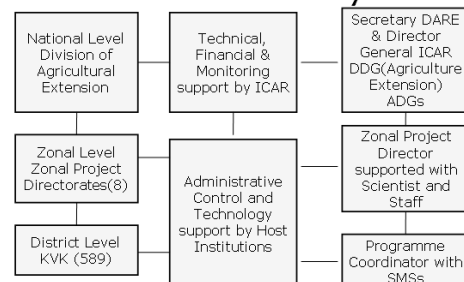
## Reviews & Monitoring

- Quinquennial Review Team
- Annual National workshop
- Annual Zonal workshop
- Mid term review
- Monthly progress report
- Quarterly progress report
- Half yearly progress report
- Annual progress report
- SAC meeting
- Visits
- Monthly review meeting by host Institutions

### Farm Science Centre - Fountain head of technology in the district



### KVK Hierarchy



## Establishment of A Farm Science Centre

### 1. Potential organizations

- Agricultural Universities / Research organizations / Departments / NGOs

### 2. Land requirement :

- 20 ha contiguous land in the name of host institution
- Cultivable with perennial source of water and electricity

### 3. Location

- Site as far as possible in the central part of the district
- Easily accessible
- Having educational, medical and other amenities

### 4. Examination of Site by Site Selection Committee

### 5. Mortgage of land / MOU

### 6. Sanction by ICAR

## Manpower

Category	Pay-scale (Rs.)	Number of Posts
Programme Coordinator	15600-39100 RGP 8000 After completion of three years 37400-67000 with RGP of 9000	1
Subject Matter Specialist	15600-39100 RGP 6000	6
Computer Programmer	9300-34800 Grade Pay 4200	1
Lab Technician	9300-34800 Grade Pay 4200	1
Farm Manager	9300-34800 Grade Pay 4200	1
Assistant	9300-34800 Grade Pay 4200	1
Stenographer Grade III	5200-20200 Grade Pay 2400	1
Driver	5200-20200 Grade Pay 2000	2
Supporting Staff	4440-7440 Grade Pay 1300	2
<b>TOTAL</b>		<b>16</b>

## Infrastructure

Works/Units	Plinth Area (sqm)	Estimated cost (Rs in lakh)
Administrative Building (1)	550	82.50
Trainees Hostel (1)	305	45.75
Residential quarters (6)	400	60.00
Demonstration Units (2)	160	15.00
Threshing floor (1)	100	3.00
Tube well (1)	-	8.00
Irrigation Channel	-	10.00
Land Development	-	5.00
Implement shed (1)	-	5.00
Farm Go down (1)	-	5.00
Fencing of boundary wall	-	20.00
Soil and Water testing lab (1)	-	15.00
Plant Diagnostic facility (1)	-	10.00
Minimal Processing unit (1)	-	3.00
Carp Hatchery (1)	-	3.00
E- Connectivity (1)	-	5.00
Integrated farming system (1)	-	5.00

## Vehicle, Farm implements and equipments

Items	Number	Estimated cost (Rs in lakh)
Jeep	1	6.50
Tractor with accessories	1	8.00
<b>Agril implements</b>		
(1) Multi crop thresher	1	1.00
(2) Zero Seed Drill	1	0.40
(3) Paddy Transplanter	1	0.40
(4) Bed Planter	1	0.75

(5) Power winnower	1	0.20
(6) Power Sprayer	1	0.20
(7) Harvester	1	2.00
(8) Laser Leveler	1	5.00
Motor Cycle	2	
Computers with accessories	1 or 2	2.00
Generator - 10 HP	1	2.00
Telephone	1	
Photocopier	1	1.00
Fax	1	0.10
Air Conditioner	1	0.30
Furniture of Admin. Building and Farmers Hostel	1	12.00
<b>AV Aids</b>		
(1) Digital Camera	1	0.25
(2) LCD Projector	1	1.00
(3) Public Address System	1	5.00
(4) TV with DVD Player	1	0.25
Others	As per need	-